

POTAIN[®]
by **Manitowoc**

Hup 40-30

**ULTIMATE VERSATILITY.
MAX PROFITS.**



**ULTIMATE VERSATILITY.
MAX PROFITS.**



Class leading versatility and performance from a self-erecting crane with 40 m (131 ft) jib.

Why own more cranes than you need? With its revolutionary design and 40 m (131 ft) jib, the new Potain Hup 40-30 self-erecting crane can help you get more jobs through higher crane utilization. That creates a higher return on your crane investment.

- > Maximum reach for class-leading performance
- > Unmatched compact design for challenging jobsites and easy transport
- > Multiple integrated configurations for various jobsite needs
- > New Smart Set-up software for simplified crane erection using the exclusive Potain remote control



MAXIMUM REACH FOR CLASS-LEADING PERFORMANCE

New crane technology offers multiple configurations for more lifting options. One mast provides two telescoping heights and three jib positions plus a potential partial jib. This versatility enables 16 possible crane configurations.

- ▼ Telescoping, integrated masts give you the option of working at heights of 25 m (82 ft) or 30 m (98 ft)



- ▼ Automatic erection system requires no extra mast section to greatly reduce setup time



New technologies for the Hup cranes

- New** > **High Performance Lifting (HPL) technology** delivers class-leading ultra high-speed lifting of maximum loads

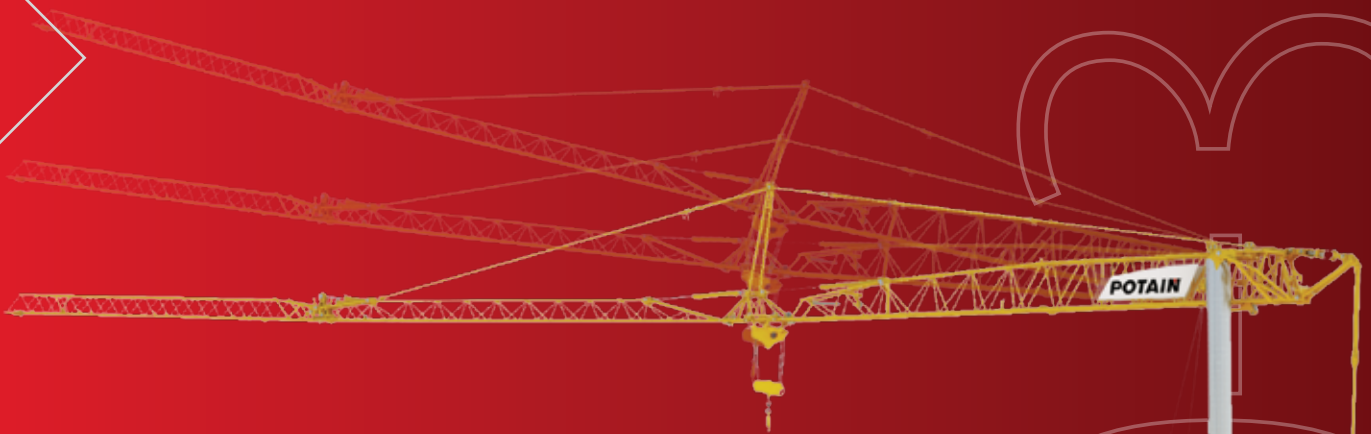
- New** > **High Performance Slewing (HPS) technology** provides greater accuracy and responsiveness in crane movements for better operator control during load swing

- > **Exclusive Power Control** functionality of 480V 3-phase provides the ability to adapt to the power available on site

- New** > **Permanent four falls reeving** provides continuous high speed lifting automatically adapted to the load



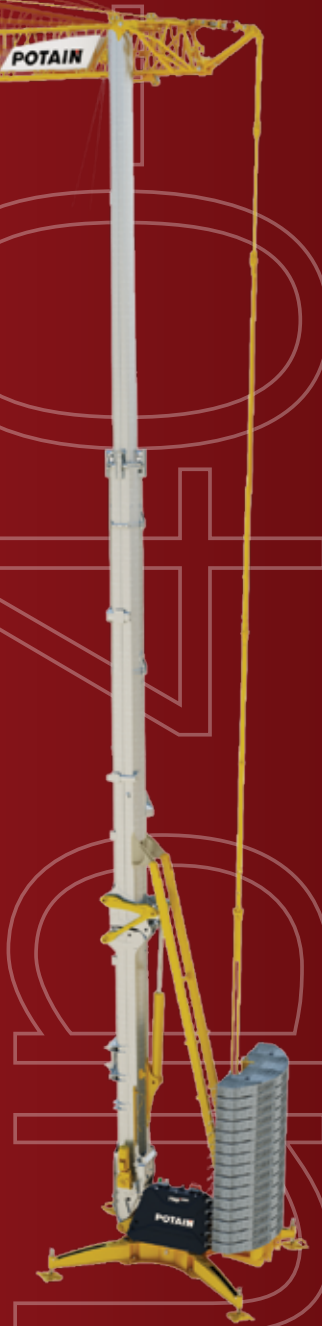
- ✓ Three-position 40 m (131 ft) jib provides extra versatility. Can be used in horizontal position or in two raised angles of 10° and 20°



NEW

POTAIN Hup 40-30 Self-erecting Crane

- > Max capacity: 4 t (4.4 USt)
- > Max radius: 40 m (131 ft)
- > Max HUH with horizontal jib: 25,6 m (84 ft) / 30 m (98 ft)
- > Max HUH at 20° raised jib: 40 m (131.2 ft)
- > Max load at jib end: 1 t (1.1 USt)
- > Footprint: 4,5 m x 4,5 m (14.8 ft x 14.8 ft)
- > Rear slewing radius: 2.50 m (8.2 ft)



UNMATCHED COMPACT DESIGN FOR CHALLENGING JOBSITES AND EASY TRANSPORT

Its class-leading compact package is ideal for jobsites with limited work space: 14 m (45 ft) long when folded and 3,9 m (12,8 ft) maximum height for easy transport. Compact package includes no extra masts to handle at installation, which reduces packing and allows for easy transport logistics and cost savings.

The Hup 40-30's compact design also makes erection and dismantling fast and easy with minimum effort required from the operator.

- ✓ Hup 40-30 is compatible with Igo transport axles



- ^ Exclusive compact package in transport



- ^ Quick and easy levelling including a 6 adjustable positions system to compensate the ground steep

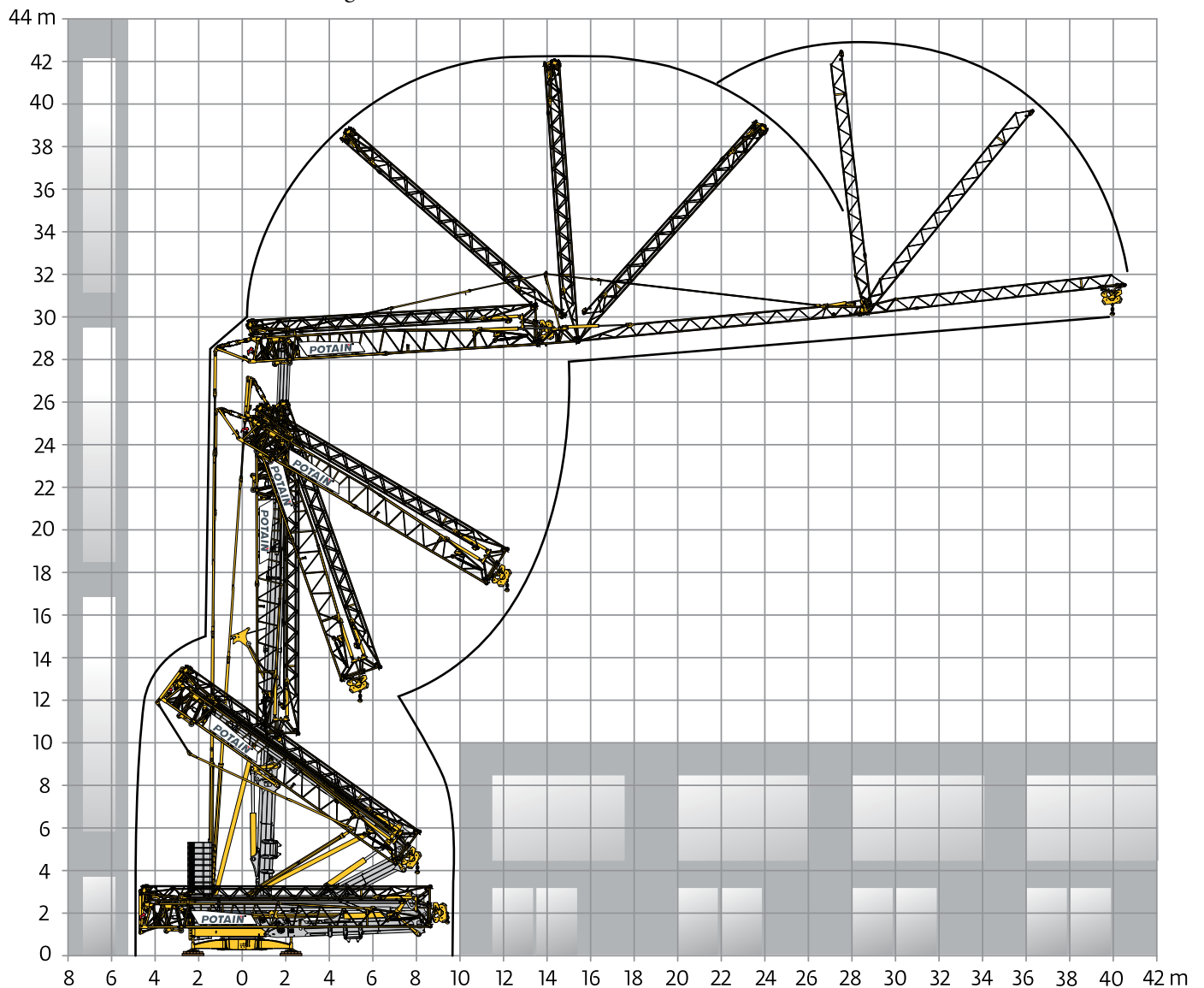


- ^ Electrical cabinet easy to open and service the crane

Innovative movement technology enables unfolding in narrow and compact areas

Jib unfolds over the top to preserve space under the crane when working

✓ next to buildings



^ 14 m (45 ft) long compact package



Hup 40-30

POTAIN

EXCLUSIVE REMOTE CONTROL CAPABILITY

The newly designed remote control and functions makes the Potain Hup 40-30 self-erecting crane more user-friendly. Offering greater productivity and adaptability to various jobsite tasks ranging from simple lifts and concrete pouring to precision lifts.

A 100 percent remote control-powered erection and piloting delivers convenient and secure operation.



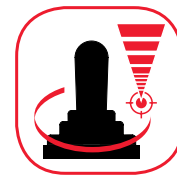
- ^ New ergonomics:
 - new full color screen
 - jogdial screen navigation

Drive Control

Three operating profiles on the remote control allow crane operators to customize crane behavior to their preference:

High Precision, Standard and Dynamic.

Choice of micro-speed on the remote control delivers high precision hoisting speeds.

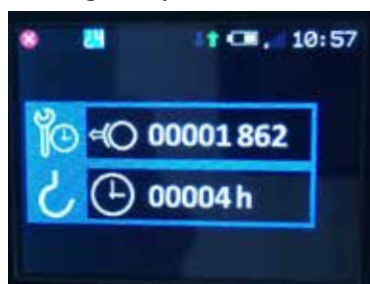


Driving and maintenance screens

Current radius indicator



Hoisting and operation indicator



Example: lifting movement

Driving indicators



- < Jib radius and capacity information.
 - White text: current values.
 - Blue text: maximum values.
 - Example: at 26,1 m, the crane can lift up to 1,7 t / the 980 kg load can be trolleyed to 40 m radius.

Crane maintenance support



Example: default description



CraneSTAR Diag option available

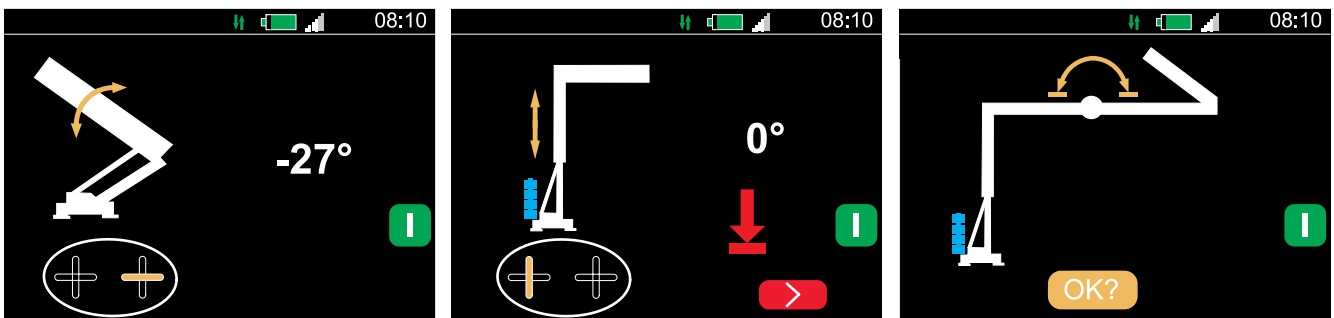
NEW SMART SET-UP SOFTWARE FOR SIMPLIFIED CRANE ERECTION

Smart Set-up

Smart Set-up is the exclusive Potain software that provides an intuitive user interface to simplify folding and unfolding the Hup 40-30 through step-by-step directions clearly visible on the remote control screen.



✓ **New Smart Set-up** software with intuitive user interface for simplified, step-by-step crane erection





Remote controlled crane erection is quick, convenient and secure.



Manitowoc Cranes

Regional headquarters

Americas

Manitowoc, Wisconsin, USA

Tel: +1 920 684 6621

Fax: +1 920 683 6277

Shady Grove, Pennsylvania, USA

Tel: +1 717 597 8121

Fax: +1 717 597 4062

Europe, Middle East, Africa

Dardilly, France

Tel: +33 (0)4 72 18 20 20

Fax: +33 (0)4 72 18 20 00

China

Shanghai, China

Tel: +86 21 6457 0066

Fax: +86 21 6457 4955

Greater Asia-Pacific

Singapore

Tel: +65 6264 1188

Fax: +65 6862 4040



Manitowoc Crane Care when you need it.

The assurance of the world's most advanced crane service and support to get you back to work fast.



Manitowoc Finance helps you get right to work generating profits for your business.

Financial tools that help you capitalize on opportunity with solutions that fit your needs.

This document is non-contractual. Constant improvement and engineering progress make it necessary that we reserve the right to make specification, equipment, and price changes without notice. Illustrations shown may include optional equipment and accessories and may not include all standard equipment.