

10042

TELEHANDLER

SKYTRAK



Performance

Rated Capacity	10,000 lb	4,536 kg
Maximum Lift Height	42 ft 1 in.	12.8 m
Load at Max Height	6,000 lb	2,722 kg
Maximum Forward Reach	26 ft 7 in.	8.10 m
Load at Max Reach	6,000 lb	2,722 kg
Frame Leveling	10°	
Lift Speed (boom retracted)		
Up	16.4 sec	
Down	15 sec	
Boom Speed		
Extended	17.2 sec	
Retracted	15.1 sec	
Top Travel Speed (4-Speed)	20 mph	32 kph
Drawbar Pull (loaded)	24,500 lb	109 kN
Outside Turning Radius	170 in.	4.32 m
Operating Weight	27,300 lb	12,383 kg

Standard Specifications

Engine

Make and Model	Cummins QSB3.8L Tier 4 F	
No. of Cylinders	4	
Displacement	229 cu in.	3.8 L
Gross Power Basic	110 hp	82 kW
Maximum Torque @ 1500 rpm	348 lb-ft	472 Nm
Fuel Tank Capacity	35 gal	132.5 L

Transmission

Powershift.
4-speed forward and 3-speed reverse.

Axles

Full-time planetary 4-wheel drive.
Oscillating rear axle with Stabil-Trak system.

Brakes

Hydraulically actuated inboard wet disc brakes.
Emergency brake with transmission declutch feature.

Tires

Standard	400/75-28
Optional	Foam-Filled or Solid

Cab

Certified ROPS/FOPS structure.
Adjustable suspension seat with retractable seat belt.
Integrated arm rest.
Rear view mirrors.
Single joystick controls.

Steering 4-Wheel

Power steering.
Operator selectable 4-wheel circle, 4-wheel crab, 2-wheel front.

Instruments

- Hourmeter
- Voltmeter
- Temperature Gauge
- Engine Oil Pressure Gauge
- DEF Gauge
- Fuel Gauge

Hydraulic System-Implement

Capacity	52 gal	196.8 L
----------	--------	---------

Piston pump.

Variable flow, load sensitive hydraulic system.

Load holding valves on frame level, stabilizer, attachment tilt, extend and lift cylinders.

Auxiliary hydraulics used for all attachments equipped with cylinders or other hydraulic components. Consists of valves, controls and hydraulic lines.

Accessories & Options

- Enclosed Cab
- Work Lights
- Road Lights
- Air Conditioning
- Rotating Beacon
- Fenders
- Reverse Sensing System

Attachments

Standard Carriage	50 in.	1.3 m	
	60 in.	1.5 m	
	72 in.	1.8 m	
Side-Tilt Carriage	50 in.	1.3 m	
	60 in.	1.5 m	
	72 in.	1.8 m	
Swing 90° Carriage	72 in.	1.8 m	
	Side-Shift Carriage	50 in.	1.3 m
Dual Fork Positioning Carriage	50 in.	1.3 m	
	Tower	8 ft (2.4 m); 50 in. (1.3 m)	Standard Carriage
Pallet Forks	2.36 in. x 4 in. x 48 in.	60 mm x 102 mm x 1.2 m	
	2.36 in. x 5 in. x 48 in.	60 mm x 127 mm x 1.2 m	
	2.00 in. x 6 in. x 72 in.	51 mm x 152 mm x 1.8 m	
Lumber Forks	2.00 in. x 7 in. x 60 in.	51 mm x 178 mm x 1.5 m	
	2.36 in. x 6 in. x 60 in.	60 mm x 152 mm x 1.5 m	
Cubing Forks	2 in. x 2 in. x 48 in.	51 mm x 51 mm x 1.2 m	
	90 in.	2.3 m	
Fork Extensions	72 in., 1.0 cu yd	1.8 m, 0.76 m ³	
	96 in., 1.5 cu yd	2.4 m, 1.15 m ³	
	102 in., 2.0 cu yd	2.6 m, 1.53 m ³	
Material Bucket	96 in., 1.75 cu yd	2.4 m, 1.34 m ³	
	Truss Boom	12 ft, 2,000 lb	3.7 m, 907 kg
Grapple Bucket	15 ft, 2,000 lb	4.6 m, 907 kg	
	12 ft with winch, 2,000 lb	3.7 m, 907 kg	
	Fork Mounted Work Platform	8 ft, 1,000 lb Capacity	2.4 m, 455 kg Capacity
Lifting Hook, Fork Mounted	Material Handling Arm	4,000 lb Capacity	1,814 kg Capacity
	Trash Hopper	72 in., 1.9 cu yd	1.8 m, 1.5 m ³
Pipe Grapple	2,000 lb Capacity	907 kg Capacity	
	72 in., 2,000 Capacity	1.8 m, 907 kg Capacity	

10042

TELEHANDLER

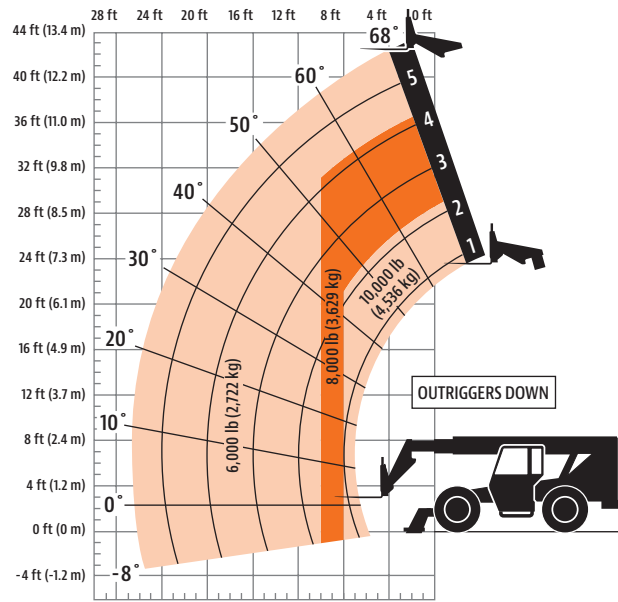
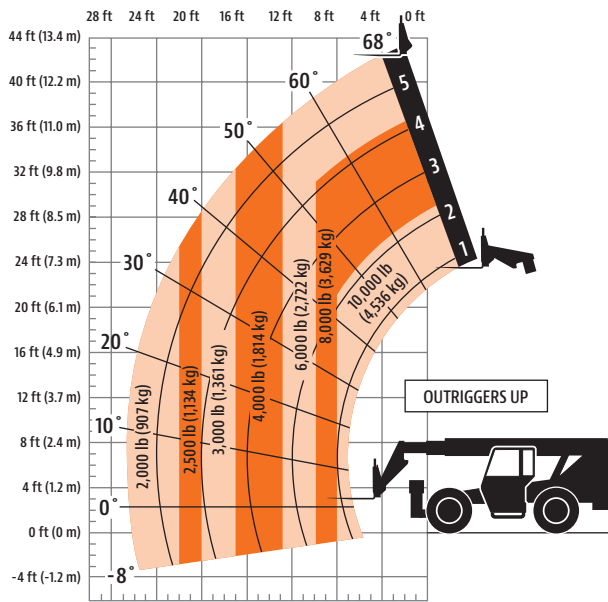
SKYTRAK

Dimensions

All dimensions are approximate.



Load Chart



The JLG "1 & 5" Warranty

JLG Industries, Inc. backs its products with its exclusive "1 & 5" Warranty. We provide coverage on all products for one (1) full year, and cover all specified major structural components for five (5) years. Due to continuous product improvements, we reserve the right to make specification and/or equipment changes without prior notification. This machine meets or exceeds applicable OSHA Regulations in 29 CFR 1910.67, 29 CFR 1926.453, ANSI A92.5-2006, and CSA Standard CAN3-B354.2-M82, as originally manufactured for intended applications.

Part No.: 3132401
R021507
Printed in USA



JLG Industries, Inc.
1 JLG Drive
McCconnellsburg, PA 17233-9533
Telephone 717-485-5161
Toll-free in US 877-JLG-LIFT
Fax 717-485-6417
www.jlg.com

An Oshkosh Corporation Company