

## KEY FEATURES

- Hydrostatic transmission for ease of operation.
- Advanced control system that allows for more options and provides improved diagnostics.
- Lightweight design that allows for efficient transport.
- Electric over hydraulic joystick for greater multifunction capability.



## ACCESSORIES &amp; OPTIONS

- Air Conditioning
- Air Shut Off Valve
- Arctic Package
- Enclosed Cab
- Fenders
- Load Stability Indication
- Multi-Reverse Camera System
- Reverse Sensing System
- Road Lights
- Flashing Beacon
- Seatbelt Engagement & Operator Presence
- White Noise Back-up Alarm
- Work Lights

## ATTACHMENTS

Standard Carriage	50-in	1.3-m
	60-in	1.5-m
	72-in	1.8-m
Side-Tilt Carriage	50-in	1.3-m
	60-in	1.5-m
	72-in	1.8-m
Swing 90° Carriage	72-in	1.8-m
Side-Shift Carriage	50-in	1.3-m
Dual Fork Positioning Carriage	50-in	1.3-m
Pallet Forks	2.36-in x 4-in x 48-in	60-mm x 102-mm x 1.2-m
	2.36-in x 5-in x 48-in	60-mm x 127-mm x 1.2-m
Lumber Forks	1.75-in x 7-in x 60-in	44-mm x 178-mm x 1.5-m
	2-in x 6-in x 72-in	51-mm x 152-mm x 1.8-m
	2-in x 2-in x 48-in	51-mm x 51-mm x 1.2-m
Cubing Forks	2-in x 2-in x 48-in	51-mm x 51-mm x 1.2-m
Fork-Mounted Extendable Truss	Material Bucket	
	72-in, 1.0-cu yd	1.8-m, 0.76-m <sup>3</sup>
	96-in, 1.5-cu yd	2.4-m, 1.15-m <sup>3</sup>
Grapple Bucket	102-in, 2.0-cu yd	2.6-m, 1.53-m <sup>3</sup>
	96-in, 1.75-cu yd	2.4-m, 1.34-m <sup>3</sup>
	12 ft, 2,000-lb	3.7-m, 907-kg
Truss Boom	15-ft, 2,000-lb	4.6-m, 907-kg
	12-ft with winch, 2,000-lb Capacity	3.7-m, 907-kg
	3-ft with winch, 4,000-lb Capacity	
Fork Mounted Work Platform	8-ft, 1,000-lb Capacity	2.4-m, 455-kg Capacity
Lifting Hook, Fork Mounted		
Lifting Hook, Coupler Mounted		

## STANDARD SPECIFICATIONS

## Performance

Rated Capacity	6,000-lb / 2,722-kg
Maximum Lift Height	42-ft 4-in / 12.9-m
Load at Max Height	6,000-lb / 2,722-kg
Maximum Forward Reach	29-ft 6-in / 9.0-m
Load at Max Reach	1,200-lb / 544-kg
Frame Leveling	10 Degrees
Lift Speed (Boom Retracted) Up	13.3 sec
Lift Speed (Boom Retracted) Down	11.3 sec
Boom Speed Extended	13.8 sec
Boom Speed Retracted	12 sec
Top Travel Speed (4-Speed)	15 mph / 24.1 km/h
Drawbar Pull (Loaded)	16,715-lb / 74-kN
Outside Turning Radius	12-ft 7-in / 3.8-m
Operating Weight	19,100-lb / 8,664-kg

## Engine

Make and Model	Deutz TCD2.9 L4
No. of Cylinders	4
Displacement	177 cu in / 2.9 L
Gross Power Basic	74 hp / 55 kW @ 2,400 rpm
Maximum Torque @ 1600 rpm	221lb-ft / 300 Nm
Fuel Tank Capacity	28 gal / 106 L

## Transmission

Hydrostatic 1-speed forward and 1-speed reverse

## Axles

Full-time planetary 4-wheel drive.  
Oscillating rear axle with Stabil-Trak system.

## Brakes

Hydraulically actuated inboard wet disc brakes with inching feature.  
Emergency brake.

## Tires

Standard	15-19.5 Pneumatic
Optional	Foam-Filled, Solid, Turf, Non-marking (Pneumatic or Foam-Filled)

## Cab

- Adjustable suspension seat with retractable seat belt
- Certified ROPS/FOPS structure
- Integrated arm rest
- High visibility seatbelt
- Rear view mirrors
- Single joystick controls

## Steering 4-Wheel

Power steering.  
Operator selectable 4-wheel circle, 4-wheel crab, 2-wheel front.

## Instruments

- Fuel gauge
- Hourmeter
- Large LCD Display for Diagnostics
- Tachometer
- Temperature gauge
- Speedometer

## Hydraulic System-Implement

Capacity	37.0 gal / 140 L
----------	------------------

## Gear Pump.

Variable flow, load sensitive hydraulic system.

Load holding valves on frame level, attachment tilt, extend and lift cylinders.

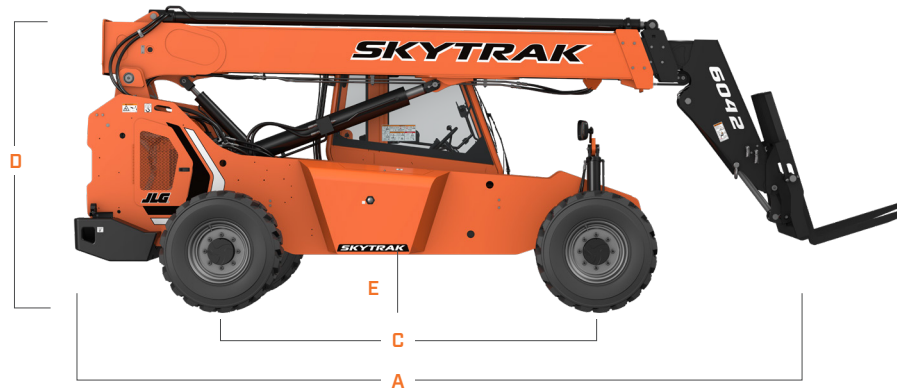
Auxiliary hydraulics used for all attachments equipped with cylinders or other hydraulic components. Consists of valves, controls and hydraulic lines.

## DIMENSIONS

All dimensions are approximate

### Dimensions

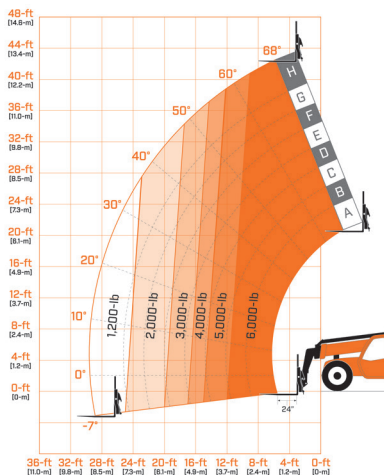
All dimensions are approximate.



- A. Machine Length 235.9-in / 5991-mm
- B. Machine Width 95-in / 2414-mm
- C. Wheelbase 122-in / 3099-mm

- D. Machine Height 99.8-in / 2534-mm
- E. Ground Clearance 15.1-in / 384-mm

## LOAD CHART



We provide coverage for one (1) full year on the entire machine, two (2) full years or 2,000 hours on the drivetrain and cover all specified major structural components for five (5) years. Due to continuous product improvements, we reserve the right to make specification and/or equipment changes without prior notification.



JLG INDUSTRIES, INC.  
Toll-free US 877-JLG-LIFT  
JLG.com

An Oshkosh Corporation Company