

KEY FEATURES

- Hydrostatic transmission for ease of operation.
- Advanced control system that allows for more options and provides improved diagnostics.
- Lightweight design that allows for transport with a truck and trailer.
- Electric over hydraulic joystick for greater multifunction capability.



ACCESSORIES & OPTIONS

- Air Conditioning
- Air Shut Off Valve
- Arctic Package
- Enclosed Cab
- Fenders
- Load Stability Indication
- Multi-Reverse Camera System
- Reverse Sensing System
- Road Lights
- Flashing Beacon
- Seatbelt Engagement & Operator Presence
- White Noise Back-up Alarm
- Work Lights

ATTACHMENTS

| | | |
|--------------------------------|-------------------------------------|----------------------------|
| Standard Carriage | 50-in | 1.3-m |
| | 60-in | 1.5-m |
| | 72-in | 1.8-m |
| Side-Tilt Carriage | 50-in | 1.3-m |
| | 60-in | 1.5-m |
| | 72-in | 1.8-m |
| Swing 90° Carriage | 72-in | 1.8-m |
| Side-Shift Carriage | 50-in | 1.3-m |
| Dual Fork Positioning Carriage | 50-in | 1.3-m |
| Pallet Forks | 2.36-in x 4-in x 48-in | 60-mm x 102-mm x 1.2-m |
| | 2.36-in x 5-in x 48-in | 60-mm x 127-mm x 1.2-m |
| Lumber Forks | 1.75-in x 7-in x 60-in | 44-mm x 178-mm x 1.5-m |
| | 2-in x 6-in x 72-in | 51-mm x 152-mm x 1.8-m |
| | 2-in x 2-in x 48-in | 51-mm x 51-mm x 1.2-m |
| Cubing Forks | 72-in, 1.0-cu yd | 1.8-m, 0.76-m ³ |
| | 96-in, 1.5-cu yd | 2.4-m, 1.15-m ³ |
| | 102-in, 2.0-cu yd | 2.6-m, 1.53-m ³ |
| Grapple Bucket | 96-in, 1.75-cu yd | 2.4-m, 1.34-m ³ |
| | 12 ft, 2,000-lb | 3.7-m, 907-kg |
| Truss Boom | 15-ft, 2,000-lb | 4.6-m, 907-kg |
| | 12-ft with winch, 2,000-lb Capacity | 3.7-m, 907-kg |
| | 3-ft with winch, 4,000-lb Capacity | |
| Fork Mounted Work Platform | 8-ft, 1,000-lb Capacity | 2.4-m, 455-kg Capacity |
| Lifting Hook, Fork Mounted | | |
| Lifting Hook, Coupler Mounted | | |

STANDARD SPECIFICATIONS

Performance

| | |
|----------------------------------|----------------------|
| Rated Capacity | 6,000-lb / 2,722-kg |
| Maximum Lift Height | 34-ft 5-in / 10.5-m |
| Load at Max Height | 4,000-lb / 1,814-kg |
| Maximum Forward Reach | 23-ft 2-in / 7.1-m |
| Load at Max Reach | 1,000-lb / 454-kg |
| Frame Leveling | 10 Degrees |
| Lift Speed (Boom Retracted) Up | 11 sec |
| Lift Speed (Boom Retracted) Down | 9 sec |
| Boom Speed Extended | 10 sec |
| Boom Speed Retracted | 10 sec |
| Top Travel Speed (4-Speed) | 15 mph / 24.1 km/h |
| Drawbar Pull (Loaded) | 12,863-lb / 57-kN |
| Outside Turning Radius | 11-ft 11-in / 3.6-m |
| Operating Weight | 14,500-lb / 6,577-kg |

Engine

| | |
|---------------------------|---------------------------|
| Make and Model | Deutz TCD2.9 L4 |
| No. of Cylinders | 4 |
| Displacement | 177 cu in / 2.9 L |
| Gross Power Basic | 74 hp / 55 kW @ 2,400 rpm |
| Maximum Torque @ 1600 rpm | 221lb-ft / 300 Nm |
| Fuel Tank Capacity | 28 gal / 106 L |

Transmission

Hydrostatic 1-speed forward and 1-speed reverse

Axles

Full-time planetary 4-wheel drive.
Oscillating rear axle with Stabil-Trak system.

Brakes

Hydraulically actuated inboard wet disc brakes with inching feature.
Emergency brake.

Tires

| | |
|----------|--|
| Standard | 15-19.5 Pneumatic |
| Optional | Foam-Filled, Solid, Turf, Non-marking (Pneumatic or Foam-Filled) |

Cab

- Adjustable suspension seat with retractable seat belt
- Certified ROPS/FOPS structure
- Integrated arm rest
- High visibility seatbelt
- Rear view mirrors
- Single joystick controls

Steering 4-Wheel

Power steering.
Operator selectable 4-wheel circle, 4-wheel crab, 2-wheel front.

Instruments

- Fuel gauge
- Hourmeter
- Large LCD Display for Diagnostics
- Tachometer
- Temperature gauge
- Speedometer

Hydraulic System-Implement

| | |
|----------|----------------|
| Capacity | 35.7 gal/135 L |
|----------|----------------|

Gear Pump.

Variable flow, load sensitive hydraulic system.

Load holding valves on frame level, attachment tilt, extend and lift cylinders.

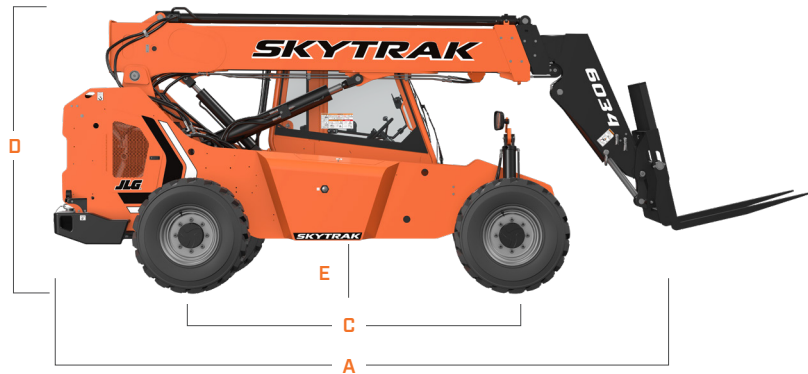
Auxiliary hydraulics used for all attachments equipped with cylinders or other hydraulic components. Consists of valves, controls and hydraulic lines.

DIMENSIONS

All dimensions are approximate

Dimensions

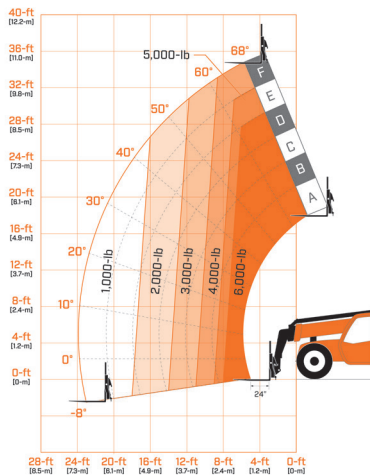
All dimensions are approximate.



- A. Machine Length 209.6-in / 5325-mm
- B. Machine Width 95-in / 2414-mm
- C. Wheelbase 110-in / 2794-mm

- D. Machine Height 97.75-in / 2483-mm
- E. Ground Clearance 15.4-in / 390-mm

LOAD CHART



We provide coverage for one (1) full year on the entire machine, two (2) full years or 2,000 hours on the drivetrain and cover all specified major structural components for five (5) years. Due to continuous product improvements, we reserve the right to make specification and/or equipment changes without prior notification.



JLG INDUSTRIES, INC.
Toll-free US 877-JLG-LIFT
JLG.com

An Oshkosh Corporation Company