

12054

TELEHANDLER

SKYTRAK®



Performance

| | | |
|-----------------------------|--------------|-----------|
| Rated Capacity | 12,000 lb | 5,443 kg |
| Maximum Lift Height | 53 ft 2 in. | 16.2 m |
| Load at Max Height | 5,000 lb | 2,268 kg |
| Maximum Forward Reach | 38 ft 10 in. | 11.8 m |
| Load at Max Reach | 3,500 lb | 1,588 kg |
| Frame Leveling | 10° | |
| Lift Speed (boom retracted) | | |
| Up | 17 sec | |
| Down | 16 sec | |
| Boom Speed | | |
| Extended | 16 sec | |
| Retracted | 15.5 sec | |
| Top Travel Speed (4-Speed) | 18.2 mph | 29.3 kph |
| Drawbar Pull (loaded) | 30,000 lb | 133.5 kN |
| Outside Turning Radius | 166 in. | 4.21 m |
| Operating Weight | 30,357 lb | 13,770 kg |

Standard Specifications

Engine

| | | |
|---------------------------|--------------------------|---------|
| Make and Model | Cummins QSF3.8L Tier 4 F | |
| No. of Cylinders | 4 | |
| Displacement | 232 cu in. | 3.8 L |
| Gross Power Basic | 110 hp | 82 kW |
| Maximum Torque @ 1500 rpm | 348 lb-ft | 472 Nm |
| Fuel Tank Capacity | 35 gal | 132.5 L |

Transmission

Powershift.
4-speed forward and 3-speed reverse.

Axles

Full-time planetary 4-wheel drive.
Oscillating rear axle with Stabil-Trak system.

Brakes

Hydraulically actuated inboard wet disc brakes.
Emergency brake with transmission declutch feature.

Tires

| | |
|----------|-----------------------------------|
| Standard | 400/75-28 |
| Optional | Foam-Filled, Solid or Non-Marking |

Cab

Certified ROPS/FOPS structure.
Adjustable suspension seat with retractable seat belt.
Single joystick controls.
Integrated arm rest.
Rear view mirrors.

Steering 4-Wheel

Power steering.
Operator selectable 4-wheel circle, 4-wheel crab, 2-wheel front.

Instruments

- Hourmeter
- Voltmeter
- Temperature Gauge
- Engine Oil Pressure Gauge
- DEF Gauge
- Fuel Gauge

Hydraulic System-Implement

| | | |
|----------|--------|-------|
| Capacity | 50 gal | 189 L |
|----------|--------|-------|

Piston pump.

Variable flow, load sensitive hydraulic system.

Load holding valves on frame level, stabilizer, attachment tilt, extend and lift cylinders.

Auxiliary hydraulics used for all attachments equipped with cylinders or other hydraulic components. Consists of valves, controls and hydraulic lines.

Accessories & Options

- Enclosed Cab
- Work Lights
- Road Lights
- Air Conditioning
- Rotating Beacon
- Fenders
- Reverse Sensing System
- White Noise Back-up Alarm
- Reversing Camera
- Positive Air Shut Off
- 74 hp Engine

Attachments

| | | |
|--------------------------------|---------------------------|------------------------|
| Standard Carriage | 50 in. | 1.3 m |
| | 60 in. | 1.5 m |
| | 72 in. | 1.8 m |
| Side-Tilt Carriage | 50 in. | 1.3 m |
| | 60 in. | 1.5 m |
| | 72 in. | 1.8 m |
| Swing 90° Carriage | 72 in. | 1.8 m |
| Side Shift Carriage | 48 in. | 1.2 m |
| Dual Fork Positioning Carriage | 50 in. | 1.3 m |
| Pallet Forks | 2.36 in. x 5 in. x 48 in. | 60 mm x 127 mm x 1.2 m |
| | 2.00 in. x 6 in. x 72 in. | 51 mm x 152 mm x 1.8 m |
| | 2.00 in. x 7 in. x 60 in. | 51 mm x 178 mm x 1.5 m |
| Lumber Forks | 2.36 in. x 6 in. x 60 in. | 60 mm x 152 mm x 1.5 m |
| | 2 in. x 2 in. x 48 in. | 51 mm x 51 mm x 1.2 m |
| Cubing Forks | 72 in., 1.0 cu yd | 1.8 m, 0.76 m³ |
| | 102 in., 2.0 cu yd | 2.6 m, 1.53 m³ |
| Fork Mounted Work Platform | 8 ft, 1,000 lb Capacity | 2.4 m, 455 kg Capacity |
| Pipe Grapple | 72 in, 2,000 Capacity | 1.8 m, 907 kg Capacity |
| Fork Mounted Extendable Truss | 8,000 lb Capacity | 3,629 kg Capacity |

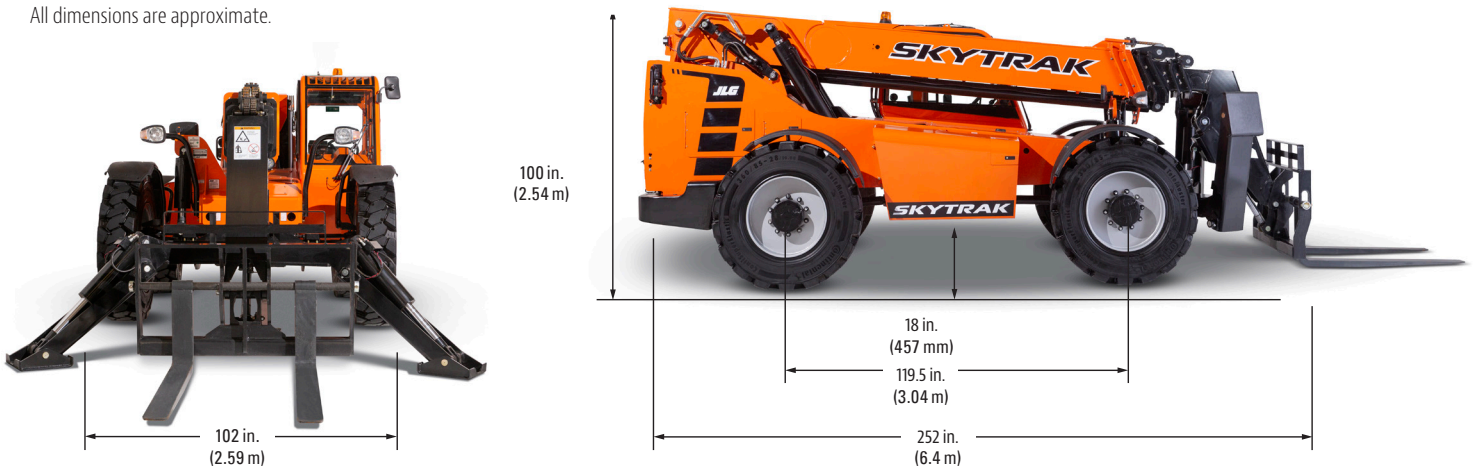
12054

TELEHANDLER

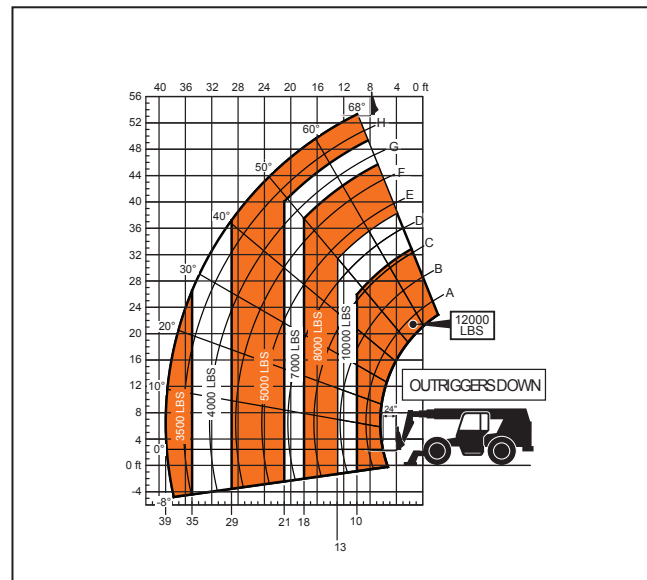
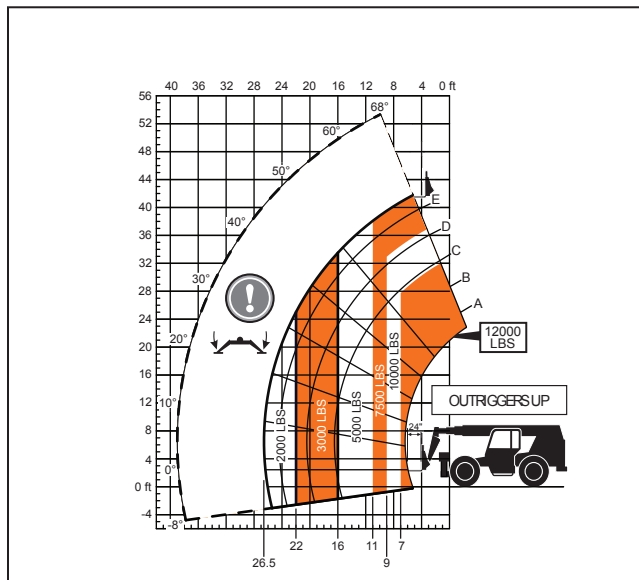
SKYTRAK®

Dimensions

All dimensions are approximate.



Load Chart



The JLG "1, 2 & 5" Warranty

We provide coverage for one (1) full year on the entire machine, two (2) full years or 2,000 hours on the drivetrain and cover all specified major structural components for five (5) years. Due to continuous product improvements, we reserve the right to make specification and/or equipment changes without prior notification.

Part No.: 3132252
R0120
Printed in USA

JLG Industries, Inc.
1 JLG Drive
McCconnellsburg, PA 17233-9533
Telephone 717-485-5161
Toll-free in US 877-JLG-LIFT
Fax 717-485-6417
www.jlg.com

An Oshkosh Corporation Company