

# Evvy 30-23 4 t

POTAIN®

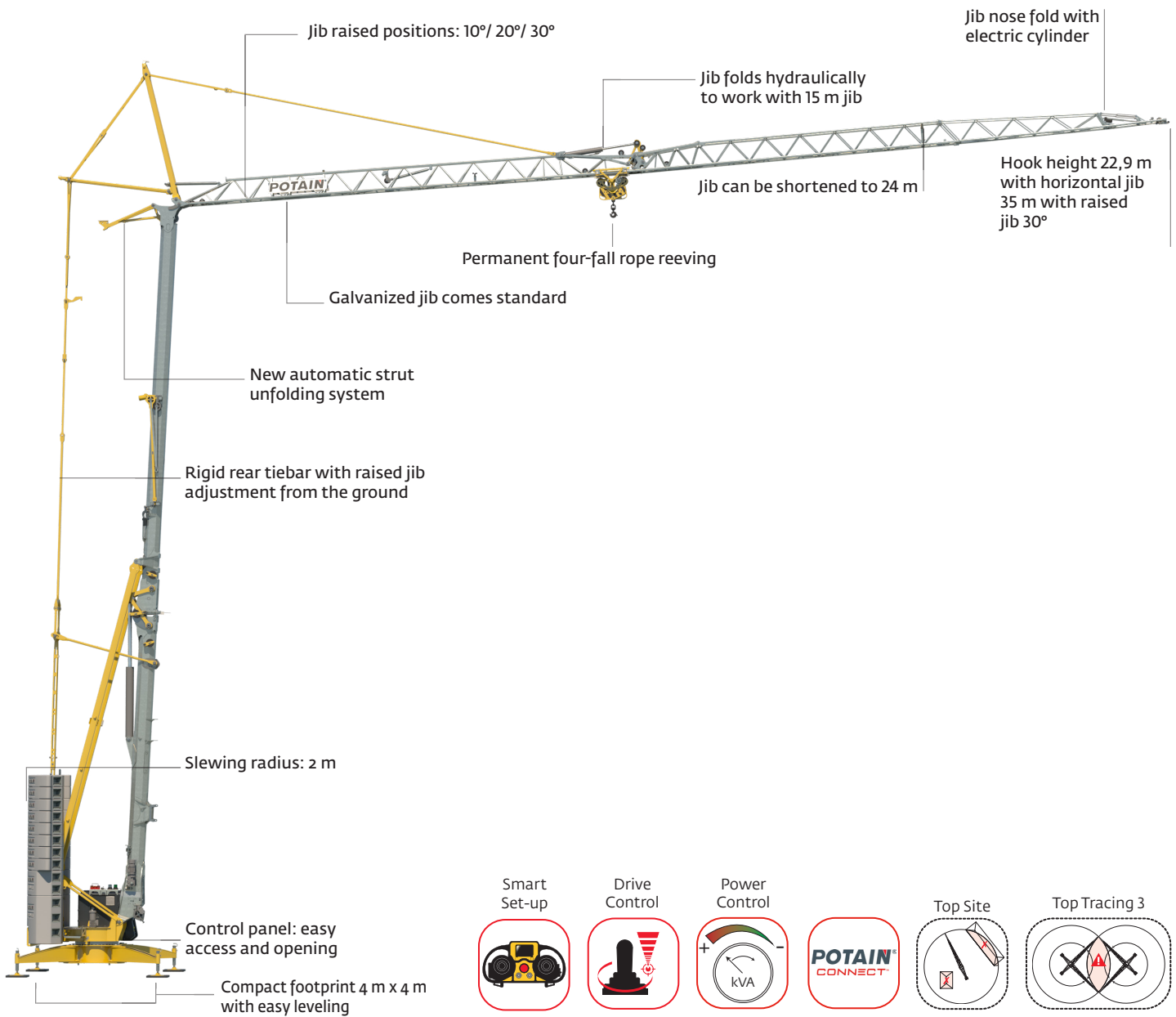
## Simply connected

Maximum capacity: 4 t at 9.5 m

Maximum load at jib nose: 1 t at 30 m

Hook height with jib horizontal: 22.9 m

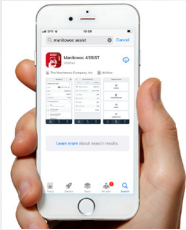
Hook height with jib raised 30°: 35 m



> Contact your local dealer for more information. Go to [www.manitowoc.com](http://www.manitowoc.com) to find your dealer.

## A connected crane

- Equipped with Potain Crane Control System (CCS) providing centralized management of safety devices
- 7-inch color touchscreen for maintenance and diagnostic assistance
- Equipped with Potain CONNECT telematics for remote diagnostic and troubleshooting as well as monitoring and analysis of crane use
- Quick start guide via QR code located on crane



- Potain CONNECT ASSIST: troubleshooting application available on smartphone

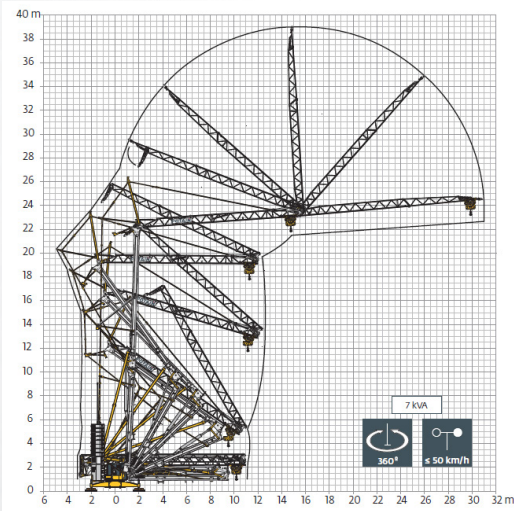


## Performance and productivity

- Several jib and crane footprint configurations to meet job site requirements
- Horizontal hook height of 22,9 m and up to 35 m with jib raised 30°
- High performance HPL™ hoisting winch combined with permanent 4-fall rope-reeving for better control
- New HPS slewing with multiple operating profiles for greater productivity
- Power Control function: 480V 3-phase allows operator to adjust for power available on site

## Easy to erect

- Crane (jib, mast section) unfolds with no manual operations:
  - Automatic unfolding of the strut
  - Jib nose with electric cylinder
- A 6-position adjustable outrigger system capable of leveling up to 8% slope
- User-friendly installation assistance with Smart Set-up technology



- Less set-up space required due to new jib nose folding sequence

## Transport

- As easy as ever to transport, Evy is compatible with existing transport axles
- Road transport 25 km/h with draw-bar or 80 km/h with fifth-wheel



## Ballasting

- Optimized ballast block centering system
- Capable of handling two ballast slabs simultaneously (with option ballasting derrick)
- Integrated steps in each ballast block for easy access

Non-contractual document. Due to permanent improvements and engineering progress, we reserve the right to modify the specification, equipment and prices without notice. The illustrations shown are subject to modification and may include optional equipment and accessories, or may not include all standard equipment.