

SJ1056 TH

TELEHANDLER

KEY FEATURES

- 10,000 lbs (4,535 kg) Maximum lift capacity
- 56' 3" (17.14 m) Maximum lift height
- 4,000 lbs (1,814 kg) Capacity @ maximum lift height (no outriggers)
- 6,000 lbs (2,722 kg) Capacity @ maximum lift height (on outriggers)
- 42'6" (12.95 m) Maximum forward reach
- 400 lbs (181 kg) Capacity @ maximum forward reach (no outriggers)
- 3,000 lbs (1,361 kg) Capacity @ maximum forward reach (on outriggers)
- DPF & DEF Free Tier 4 final 74hp/287 lb-ft Deutz TCD 3.6L engine
- 20,000 lbs Drawbar pull
- 3 Speed Dana powershift transmission & Dana axles
- Yoke mounted lifting hook
- 48" Quick attach, floating pin carriage
- Pallet forks, 2.36"x4"x48", 10,000 lbs capacity

OPTIONAL POWERPLANT

- Tier 4 Final 107hp / 320 lb/ft Deutz TCD 3.6L (includes DEF/SCR system)

TIRE OPTIONS

- Airless solid rubber 13 x 24
- Non-marking foam filled 14 x 24 16PR rough terrain
- Non-marking airless solid rubber 13 x 24

STANDARD FEATURES

- Axle mount outriggers
- Auxiliary hydraulics
- Engine block heater
- Quick attach carriage mount
- Rear window with wiper
- Side window
- Suspension seat
- Single multifunction pilot operated joystick control
- In-cab engine multifunction display
- Hydraulic test ports
- Lockable in-cab storage box
- Rear towing hitch pin
- Fiberglass engine cowling
- Steel component and access covers
- 2 Year Gold Leaf Warranty (5 year structural warranty)

FORK OPTIONS

- Pallet forks, 2.36"x4"x48", 60" or 72", 10,000 lbs capacity
- Pallet forks, 2.25"x5"x48", 60" or 72", 12,000 lbs capacity
- Fully tapered forks, 1.75"x7"x48", 12,000 lbs capacity
- Block forks, (set of 6) 2"x1.5"x46", 9,000 lbs capacity

† Standard lead times may be increased when optional equipment is added, consult factory.

‡ Capacities and machine weights may differ when options are added.

SJ1056 TH TELEHANDLER

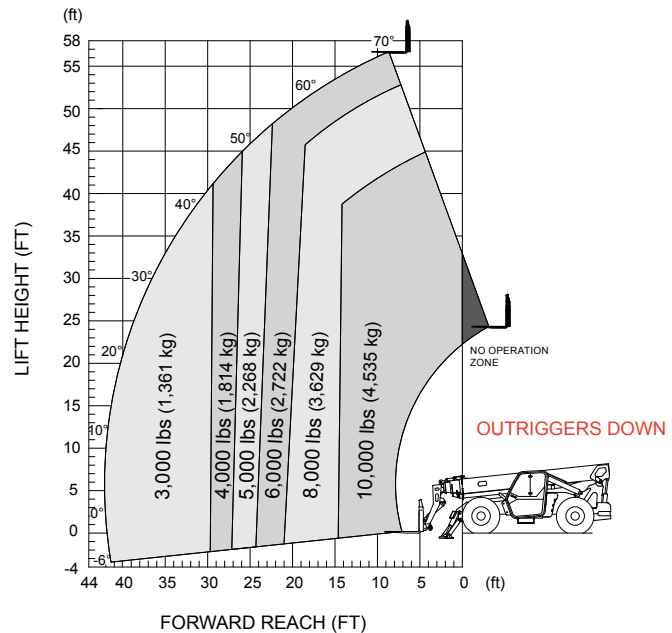
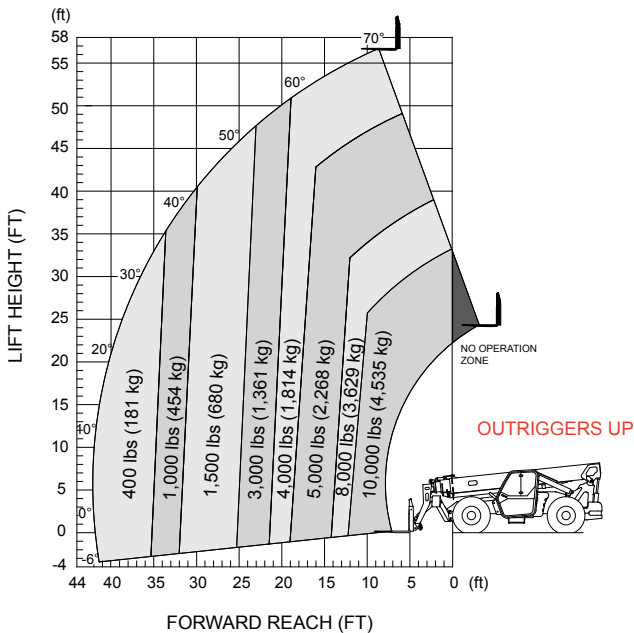
10,000 lbs (4,535 kg) capacity, 56' 3" (17.14 m) maximum lift height

SPECIFICATIONS	SJ1056 TH
Maximum Lift Capacity	10,000 lbs (4,535 kg)
Maximum Lift Height	56' 3" (17.14 m)
Rated Lift Capacity @ Maximum Height	4,000 lbs (1,814 kg)
Rated Lift Capacity @ Max Height w. O/R	6,000 lbs (2,722 kg)
Maximum Forward Reach	42' 6" (12.95 m)
Rated Lift Capacity @ Maximum Reach	400 lbs (181 kg)
Rated Lift Capacity @ Max Reach w. O/R	3,000 lbs (1,361 kg)
O/A Length - Less Forks	22' 2" (6.75 m)
Overall Height - Stowed	8' 1" (2.47 m)
Overall Width	8' 5" (2.56 m)
Ground Clearance	19" (48.3 cm)
Turning Radius - Outside	153" (3.89 m)
Operating Weight	33,250 lbs (15,082 kg)
Engine	74hp / 287 lb-ft Deutz TCD 3.6L T4F
Max Travel Speed - Forward	15 mph (24 km/h)
Drawbar Pull	20,000 lbs
Transmission	Dana Powershift, 3 Speeds F/R
Axles	Dana
Steering	3 mode (Front Wheel, 4 Wheel, Crab)
Tires	Foam Filled 14 x 24 16PR Grip Lug
Fuel Tank Capacity	35 gallon (132 L)
Hydraulic Reservoir	43.85 gallon (166 L)

OPTIONS
■ Closed cab (adds front and top window, sliding side window, wipers, full door, heater/defroster, operator fan)
■ Air conditioning (closed cab only)
■ Premium joystick
■ Four wheel fenders
■ Road light package (2 front headlights, front & rear turn signals, tail lights, brake lights)
■ Work light package (2 front facing & two rear facing halogen work lights)
■ Boom light package (2 boom mounted LED work lights)
■ Rotating beacon
■ Backup sensor
■ Backup sensor and camera
■ Cold weather package (cold start engine oil, 50/50 antifreeze mix, battery blanket & hyd. tank heater)
■ Service convenience package (remote axle grease points & clean drain engine oil pan valve)
■ Positive air shut-off valve
■ Reserve brake system
■ Pintle hitch (in lieu of standard hitch pin)
■ Non-destructive testing
■ ELEVATE telematics
■ Warranty options (3 year and 5 year options available)

QUICK ATTACH CARRIAGES / ATTACHMENTS

- 48", 60" or 72" Floating pin carriage, 10,000 lbs capacity
- 48", 60" or 72" Floating pin, side tilt carriage, 10,000 lbs capacity
- 72" Floating pin, swing carriage, 9,000 lbs capacity
- 53" Fork positioner, 10,000 lbs capacity
- 2' High capacity jib boom, 10,000 lbs capacity
- 12' or 15' Truss boom, 2,000 lbs capacity
- 1.75 Cubic yard bucket, 4,000 lbs capacity



Skyjack Head Office

55 Campbell Rd. Guelph, ON Canada N1H 1B9
 Sales Inquiries: 1-877-755-4387 (1-877-SJLIFTS)
 Main Switchboard: 1-800-265-2738
 Phone: 519-837-0888
 Fax: 519-837-8104
 Email: skyjack@skyjack.com
 www.skyjack.com

IMPORTANT

- Machine design complies with ANSI/ITSDF B56.6-2016 stability requirements for rough terrain forklifts.
- Rated capacities shown are with machine on firm level ground, steered straight with frame level and on properly inflated tires.
- Read boom angle and boom extension, then determine allowable load from chart.
- Do not exceed rated loads as dangerous and unstable machine conditions will result.
- Always travel with boom retracted in the lowest possible position.

