

Cat Lift Truck offers a complete range of durable lift trucks, from gasoline, LPG, diesel-powered and electric counterbalance lift trucks to warehouse equipment designed to handle your toughest applications. We know you demand uncompromising quality from lift trucks that maximize uptime and get the job done efficiently. Our rugged machines deliver day after day by providing you with all the life-cycle cost of ownership benefits you've come to expect from Cat lift trucks.

**BUILT FOR IT.™**



**TOTAL MACHINE  
SATISFACTION.  
THAT'S THE WAY  
WE'RE BUILT.**



\*Note : Picture above is for illustration purpose only. Please contact your local dealers for more information.

## **Internal Combustion Pneumatic Tire Lift Trucks**

**Capacity: 10.0 - 16.0 ton**

**Japan Made Truck**

# ABSOLUTE TOUGHNESS, RESOLUTE ENDURANCE



## QUALITY NEVER QUITS

With top engine performance, this lift truck series is ready to take on the most rugged applications, delivering day after day, shift after shift - even into the night.

## BUILT TO PERFORM

The Cat® DP100N1 - DP160N1 pneumatic tire lift truck series provides optimum power and reliability to tackle the toughest material handling applications. Equipped with a high-performance Perkins® 1204E 4.4L engine, this series offers increased fuel efficiency, reduced emissions and lower overall operating cost.

### ADVANTAGES TO YOU:

- 10,000 - 16,000kg lift capacities
- Controlled, yet powerful acceleration maximizes productivity.
- **13% increase\* in fuel efficiency** means a better bottom line for your business.
- **500-hour extended service intervals** for less maintenance and reduced downtime.
- Emission levels are well below **Environmental Protection Agency (EPA) Tier 4 interim requirements.**
- **World-class service and support** provided by the best dealer network in the industry.

### KEY APPLICATIONS:

- Lumber
- Steel and pipe
- Fabricated metals
- Concrete, stone, clay and glass
- Industrial machinery and equipment

## DP100-160N1

DP100N1 - DP160N1 series is equipped with essential features for optimum operator comfort and control. **Premium ergonomics** and a smooth, controlled ride come together to help your operators achieve maximum productivity - shift after shift.



## EXCEPTIONAL COMFORT

The full-suspension standard vinyl seat allows adjustment in numerous places to provide the operator with a comfortable ride.

- **Front and back adjustment** - slides up to 165mm for operators of various heights.
- **Suspension adjustment** - adds support in the seat based on the weight of the operator.
- **Lumbar support adjustment** - supports the operator's lower back for better comfort.
- **Fold down pin** - allows the seat to easily move for access to the engine hood

**More Comfort** - minimizing noise and vibration levels will keep the operator as comfortable as possible with the goal of increasing efficiency while decreasing overall fatigue.

Less vibration and noise is achieved through the use of:

- Rubber mounted components
- Fully-insulated engine hood
- Helical transmission gears
- Closed wheel wells

**More Comfort** - fingertip controls are located in the armrest for easy operator access and control throughout the shift. This provides maximum control of the lift truck's hydraulic functions with minimal effort and helps reduce operator fatigue throughout the shift.

## MORE FEATURES FOR YOUR OPERATOR

- **Hydrostatic steering** - minimizes the steering effort regardless of speed, providing better lift truck control and maneuverability.
- **Tilt steering column with mechanical quick return** - allows the operator to adjust and lock, returning the steering column to its preset position.
- **Electronic direction control** - allows the operator to easily shift between forward and reverse travel without losing contact with the steering wheel, resulting in smooth direction changes.
- **Pneumatic tires** - provide traction and a comfortable ride in rugged environments. The standard dual drive tires offer added stability while handling loads up to 16,000kg.



**Fuel-efficient Perkins® diesel engine**  
EPA Tier 4 interim-compliant



**Solid steel frame**  
More steel in the frame for added strength



**Front to back visibility**  
Narrow mast channels with a large window of vision and a low profile counterweight promote good visibility while traveling



**Durability and strength**  
One-piece steer axle reduces stress on the chassis and allows the lift truck to perform in rugged environments

# Quality

## OPTIMUM VISIBILITY, MAXIMUM EFFICIENCY

The Cat DP100N1 - DP160N1 series is equipped with **essential indicators and features** to help keep your operators alert and confident throughout the workday. Experience **maximum productivity** with this lineup of powerful tools.



### Premium LCD / LED Display

The easy-to-read display with at-a-glance indicators helps to keep the operator aware of the truck's performance. Features like **speed, travel direction and maintenance requirements** are easily visible throughout operation.



### Electronic Backup Alarm

The alarm sounds anytime the truck is in **reverse, alerting pedestrians** and other operators working nearby.

### Security Features

Dedicated to your security from the moment you get on the lift truck to the end of the shift, the DP100N1-DP160N1 series offers these standard features:

- Anti-slip step plate
- 18-inch elongated grab bar
- Electronic backup alarm
- Panoramic mirrors

### Engine Protection System

This system is designed to keep the lift truck running at peak performance. **Display-based indicators** notify the operators when vital fluids are low or engine maintenance is required, resulting in greater uptime while helping to reduce the risk of more costly maintenance needs later down the line.



### Ground Speed Control

**Software and sensors** limit the maximum travel speed of the truck without limiting its performance. See your local Cat lift truck dealer for flexibility in adjusting the speed.



### Panoramic Mirrors

These mirrors are counterweight-mounted, offering added visibility during operation.

### Presence Detection System



The Presence Detection System (PDS) activates whenever the operator leave the normal operating position without activating the parking brake. This integral computer-based feedback system uses both audible and visual indicators to alert the operator to potentially hazardous situations, while increasing operator awareness.

# Reliability

## SUSTAINABLE PERFORMANCE AND QUALITY

Equipped with a powerful four-cylinder engine, the Cat DP100N1-DP160N1 series is ready to work when you are. Delivering powerful acceleration for maximum productivity, these lift trucks were built for real performance.

### HIGH-PERFORMANCE ENGINE

This lift truck series features a **Perkins 1204E 4.4L sequential twin turbo, in-line four cylinder engine**, which draws from more than 80 years of diesel engine experience. Building only the best industrial engines, Perkins has spent a vast amount of time and resources on engine development for increased productivity and lower overall operating costs. This engine is able to provide comparable productivity with a fraction of the fuel, and ultimately, a fraction of the operating cost.

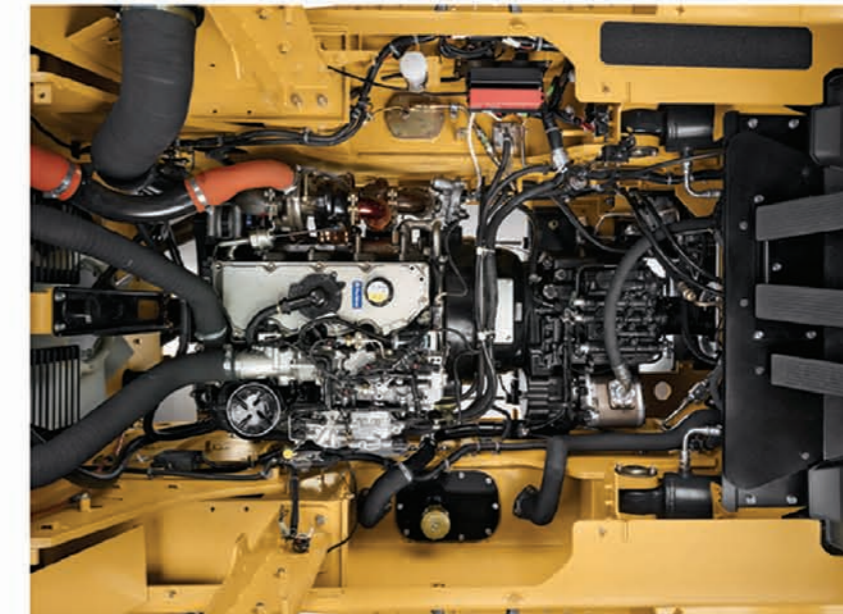
### Benefits :

- ✓ Performs with **13% more fuel efficiency** than the previous model, resulting in greater annual savings.
- ✓ **Fuel saver mode** lowers fuel consumption by **up to 14%**, while maintaining up to 95% of overall productivity.
- ✓ Low-speed torque offers controlled, yet powerful acceleration for maximum productivity.
- ✓ **Twin turbochargers** deliver rapid response and a better driving experience for your operators.
- ✓ Built to meet **EPA Tier 4 interim standards**.

### REDUCED EMISSIONS

This lift truck series features a **Diesel Particulate Filter (DPF)** designed to meet **U.S. EPA Tier 4 interim standards**. The DPF passively burns off soot in the system, helping to minimize harmful emission levels.

- ✓ **Increased uptime** - the soot in the DPF canister will burn off on its own when needed while the operator continues to work.
- ✓ **Maintenance free** - the emission control system does not require additives and undergoes passive regeneration, allowing for uninterrupted work and less downtime.
- ✓ **Service ability** - trained service technicians at your local Cat lift truck dealer can provide specialized service and support on the entire truck, including the Perkins engine.



Perkins 1204E 4.4L sequential twin turbo, four - cylinder engine

## Customer Service



Cat Lift Trucks is committed to providing industry-leading customer service, delivered by experienced and reliable material handling dealers. Cat Lift Trucks puts its customer's needs first, with one of the most comprehensive customer support programs in the business.



### EASY DAILY CHECKS

of the coolant, engine oil, transmission oil, hydraulic oil and brake oil levels can be checked conveniently and requires no special tools nor time consuming disassembly of lift truck

### RAPID TROUBLESHOOTING

of electrical components is achieved via on-board diagnostics with the CAN bus system. This state of the art communication protocol cuts down on the needs to use numerous individual functions. Thereby, reducing the messings and confusion in troubleshooting.

Truck can also store up to a history of 32 fault codes.

## Specification

Characteristics				DIESEL ENGINE TRUCK					
1	Type of Truck			DP100N1	DP120N1	DP135N1	DP150N1	DP160N1	
2	Model			10000	12000	13500	15000	16000	
3	Loading Capacity		kg						
4	Load Center		mm	600					
Performance									
5	Maximum Fork Height		mm	A	3072	3079	3088	3088	3092
6	Free Fork Height		mm	B	72	79	88	88	92
7	Speeds	Lifting	Loaded		410	410	340	340	320
			Unloaded		440	440	370	370	340
		Lowering	Loaded		460	460	480	480	440
			Unloaded		480	480	400	400	370
8	Tilt	Mast	Forward	deg	15	15	15	15	15
			Backward	deg	12	12	12	12	12
9	Speeds	Traveling	Loaded	km/h	26.5	25	25.5	25	24.5
			Unloaded	km/h	31	31	32	32	31.5
10	Maximum Drawbar Pull	stationary on slope	Loaded	kN	121	122	110	110	109
	Drawbar Pull	at 1.6km/h	Loaded	kN	100	100	92	92	91
11	Maximum Gradeability	stationary on slope	Loaded	%	42	42.1	38.7	36.1	33.5
	Gradeability	at 1.6km/h	Loaded	%	42	39.1	31.6	29.5	27.5
12	Turning Radius		mm	C	4000	4060	4160	4550	4815
13	Practical Intersecting Aisle Width		mm		3460	3500	3600	3750	3920
Dimensions									
14	Overall Length to Fork Face		mm	D	4295	4375	4525	4830	5040
15	Width	with Standard Tires	mm	E	2515	2515	2605	2605	2635
		with Lowered Mast	mm	F	3090	3090	3330	3330	3530
16	Height	with Extended Mast (with backrest)	mm	G	4590	4590	4830	4830	5030
		to top of Overhead Guard	mm	H	2915	2915	2960	2960	2955
17	Forks (Thickness x Width x Length)		mm		72x180x1220	79x180x1220	88x180x1220	88x180x1220	92x180x1220
18	Forks Spread (Out-to-Out Minimum / Maximum)		mm		480-2020	480-2020	480-2020	480-2020	480-2020
19	Front Overhang (Center of Front Axle to Fork Face)		mm	K	755	765	790	790	805
20	Wheelbase		mm	L	2800	2800	2800	3100	3300
21	Tread Width	Front, Standard Tires	mm	M	1900	1900	1905	1905	1905
		Rear, Tires	mm	N	1965	1965	1925	1925	1890
22	Ground Clearance	at Lowest point mast	mm		260	260	305	300	300
		at Center of Wheelbase	mm		310	310	355	355	355
23	Tire Size	Front	mm		10.00-20-14PR	10.00-20-16PR	12.00-20-18PR	12.00-20-18PR	12.00-20-20PR
		Rear	mm		10.00-20-14PR	10.00-20-16PR	12.00-20-18PR	12.00-20-18PR	12.00-20-20PR
Weight									
24	Machine Weight		kg		14680	15920	17560	18060	18820
Brake									
25	Service Brake Type			Air Hydraulic Composite					
26	Parking Brake Type			Mechanical					
Power Train									
27	Engine	Model		Perkins 1204E					
		Max. Rated Power/rpm to DIN70020	kW/rpm	129/2200					
		Max. Rated Torque/rpm to DIN70020	Nm/rpm	750/1400					
		Displacement	cc	4400					
		Fuel Tank Capacity	L	180	180	180	220	246	
28	Transmission	Type		Powershift					
		Forward		3 speed					
	Backward		3 speed						
29	Relief of Pressure	For Attachments	Mpa	20.6					

