

TEC 1100

110 ton (100 mt)
Telescopic Crawler Crane

- 150' (45.7 m) main boom
- 159' (48.6m) main boom tip height
- Five section full power boom
- Remarkable control, reliability & capacity performance
- Unbeatable hydraulic pilot-operated control
- Fits into places other cranes can't
- 20° tilting cab
- Quick mobilization - transports in four loads
- Rear view and winch cameras

Link-Belt
C R A N E S



TCC 1100

Built for remarkable control, reliability and capacity performance on any terrain

- 320 hp (239 kW) Cummins QSL Tier 4 i engine
- Variable displacement piston type main pumps with total horsepower control
- Main hoists powered through piston motors and winch planetary drums grooved for 7/8" (22mm) wire rope
- 21,120 lb (9 579 kg) of line pull
- 537 fpm (163.7 m/min) of winch speed
- Three working gauges
- Multiple counterweight configurations

Standard with:

- ✓ Upper guardrail
- ✓ Rear view camera
- ✓ Winch camera
- ✓ Travel and swing alarm
- ✓ Cat walks
- ✓ Assembly RCL capacity chart on jacks

Greaseless boom

Standard hoist drum cable follower and optional third wrap indicator

360° remote high intensity flood light*

Roof wiper with opening top hatch

20° tilting cab

Link-Bolt

Front and rear tool boxes*

Fast and easy deploy swing carbody jacks



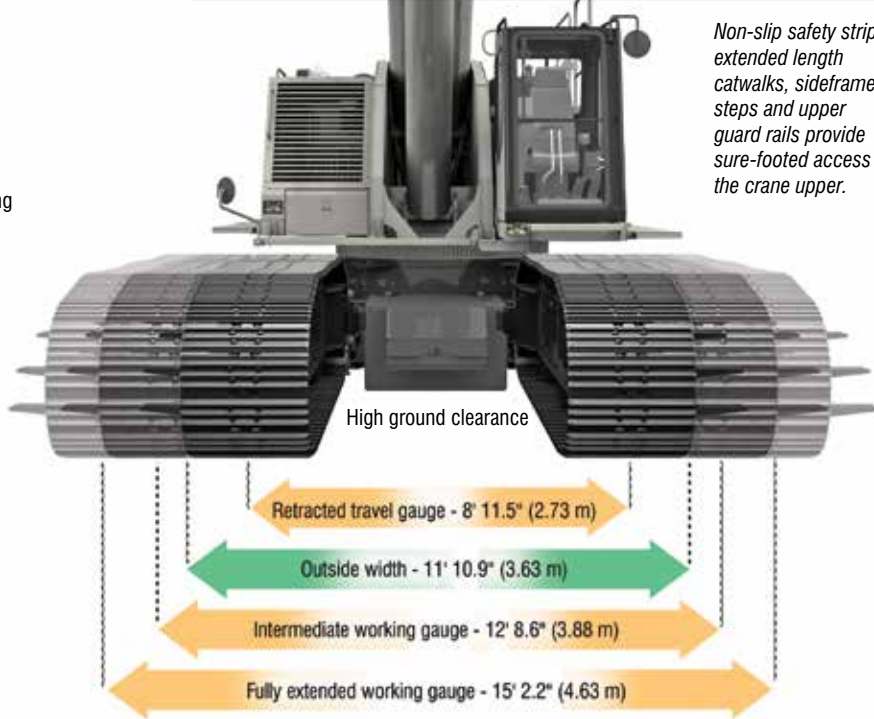
Excellent access for all routine engine and hydraulic maintenance

- Winch view camera
- Rear view camera
- Upper guard rails
- 3-piece cast modular counterweight provides partial counterweight capacities
- Remote oil cooler
- Audio visual swing warning
- Left/right side catwalks
- Lockable compartments
- 36" (914 mm) 3 bar grousers
- Sealed idlers and (oil-filled) upper and lower rollers

*optional



Non-slip safety strips, extended length catwalks, sideframe steps and upper guard rails provide sure-footed access to the crane upper.





Heavy-duty power for the most demanding jobs

- Low noise, tier 4i Cummins, four stroke diesel with an abundance of horsepower to provide multi-function operation and fast 2.0 mph travel speed. All engine systems are monitored via the on board engine control monitor.
- On-demand, direct drive, high pressure variable displacement piston pumps power the boom hoist function as well as matching front and rear high pressure piston winch motors connected through planetary drives to large diameter grooved drum laggings.
- Independent hydraulic boom extend/retract action is provided via hydraulic telescopic cylinders with cable extend for the tip section.
- A dedicated hydraulic swing pump feeds two independent swing drive assemblies with open center free swing, providing a smooth glide feel. Both dynamic and static swing brakes are also offered as standard equipment.
- Travel propel is achieved through individual side frame-mounted, two-speed, high pressure piston motors / travel reduction boxes with integral travel brake.
- Oil is cooled through by a remote mounted, hydraulic powered, high capacity cooler.



Highly functional and comfortable cab

- Cab tilt to 20°
- High capacity air-conditioning
- High capacity hot water heating
- Six-way adjustable seat
- LED service monitor screen provides engine performance and critical data using conventional gauge appearance. Second level provides actual digital values, as well as diagnostic information.
- Adjustable armrest console with pilot-operated single-axis or joystick controls
- Hydraulic pilot controls for variable hoist, swing and travel performance
- Variable hydraulic output from main pumps controlled by variable hand throttle for infinite control
- Fingertip high speed hoist button for front and rear drum
- Rear view and winch view cameras



Link-Belt PULSE

Link-Belt PULSE is the Link-Belt designed total crane operating system. It includes the rated capacity limiter, boom extend mode controller, diagnostic capabilities, and continuous monitoring of multiple crane functions and conditions. To aid operators in safe and efficient operation, its high-resolution, color-intense graphic display provides excellent contrast even in direct sunlight.

Full power boom with attachment flexibility

- Boom requires no greasing because of ingenious Teflon wear pucks impregnated in the full contact wear pads.
- Quick reeve boom head eliminates the need to remove the becket to change the reeving.
- Three extend modes: A-max¹, Amax² and standard modes enhance both the structural and stability capacity capability and are fully synchronized for normal operation.
- Manual offset fly: 2°, 15°, 30°, 45°
- No deducts for stowed attachments



Lightweight nylon head sheaves (including the optional auxiliary lifting sheave shown here) reduce overall machine weight and increase lift capacities.

Hammerhead boom nose allows the operator to work at high boom angles.



A-max modes

The exclusive A-max modes offer substantially increased capacities for in-close, maximum capacity picks and provide the operator the capability to match the crane's configuration to specific job site conditions.

- A-max¹: 95' (29m): Inner and center sections are extended, offering maximum strength
- A-max²: 122' 6" (37.34 m): Tip, outer and center sections are extended yielding maximum stability.
- Standard boom extension self-proportions all four sections equally.



Innovative 10 ft (3.0m) fly is integral to one of the on-board fly options. Over 25 tons (22.6 mt) capacity and one-load two-line lift procedures.

Finally a 100+ ton telecrawler you really can self-assemble (with confidence!)



Quick mobilization & superb job site mobility

- Transports complete in THREE or FOUR LOADS
- Main unit transports under 89,000 lbs (40 370 kg) with sideframes removed
- Three overflow loads under 44,500 lbs (20 185 kg)
- Four wide-spread hydraulic jacks for easy sideframe assembly/disassembly
- 2 mph (3.2 kph) high speed travel
- Fold-up catwalks



Fast, easy counterweight removal



JUST 4 TRUCKS GETS THE TCC-1100 TO YOUR JOB!	
Main transport load: Under 88,500 lbs (40 143.6 kg)	12' 8" overall transport height on 10" blocks 10' 6" overall width with sideframes removed
1st overflow: 44,000 lbs (19 958.4 kg)	"A" ctwt 19,000 lbs (8 618.4 kg) Two 12,500 lbs (5 670 kg) carbody counterweights
2nd & 3rd overflow: 44,500 lbs each (20 185.2 kg)	28,500 lbs (12 927.6 kg) sideframe 16,000 upper "B/C" ctwt

Complete self-load-out and assembly. Link-Belt PULSE RCL monitors capacities on jacks.



Link-Belt Construction Equipment Company - Lexington, Kentucky
www.linkbelt.com

© Link-Belt is a registered trademark. Copyright 2012. All rights reserved.
 We reserve the right to change designs and specifications at any time.
 Litho in U.S.A. 11/12 #4390