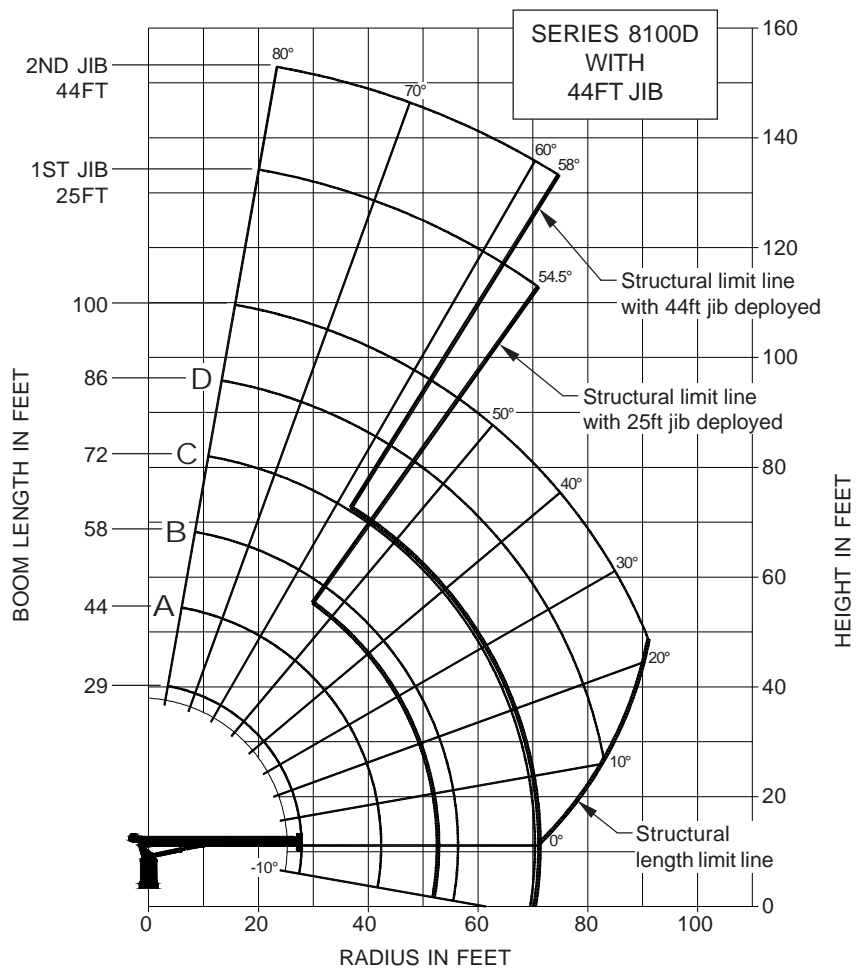


NATIONAL CRANE CORPORATION



NOTE:

1. Operate with jib by radius when main boom is fully extended. If necessary increase boom angle to maintain loaded radius.
2. Operate with jib by boom angle when main boom is not fully extended. Do not exceed rated jib capacities at any reduced boom lengths.
3. Capacities do not exceed 85% stability.
4. Shaded areas are structurally limited capacities.

| LMI OPERATING CODE | |
|--------------------|------------------------------|
| OPERATING MODE | |
| 01 | Main Boom - No Jib Stowed |
| 02 | Main Boom - Jib Stowed |
| 03 | 25 ft Tele Jib |
| 04 | 44 ft Tele Jib |
| 11 | Man Basket On Main Boom |
| 12 | Man Basket On 25 ft Tele Jib |
| 13 | Man Basket On 44 ft Tele Jib |

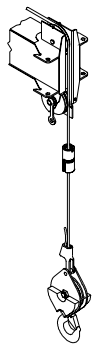
LOAD RATINGS

| LOAD RADIUS (FEET) | LOADED BOOM ANGLE | 29FT BOOM (lb) | LOADED BOOM ANGLE | A 44FT BOOM (lb) | LOADED BOOM ANGLE | B 58FT BOOM (lb) | LOADED BOOM ANGLE | C 72FT BOOM (lb) | LOADED BOOM ANGLE | D 86FT BOOM (lb) | LOADED BOOM ANGLE | 100FT BOOM (lb) | LOAD RADIUS (FEET) | LOADED BOOM ANGLE | 25FT JIB (lb) | LOADED BOOM ANGLE | 44FT JIB (lb) |
|-------------------------------------------|-------------------|----------------|-------------------|------------------|-------------------|------------------|-------------------|------------------|-------------------|------------------|-------------------|-----------------|--------------------|-------------------|---------------|-------------------|---------------|
| 5 | 79 | 46,000 | | | | | | | | | | | 30 | 78 | 3,900 | 80 | 2,750 |
| 8 | 72.5 | 30,700 | 79 | 27,900 | | | | | | | | | 35 | 75.5 | 3,400 | 78 | 2,500 |
| 10 | 68 | 25,500 | 76 | 23,200 | | | | | | | | | 40 | 73 | 2,800 | 76 | 2,250 |
| 12 | 63.5 | 21,800 | 73.5 | 19,700 | 78 | 18,050 | | | | | | | 45 | 70.5 | 2,350 | 74 | 2,000 |
| 14 | 59 | 19,000 | 70.5 | 17,200 | 76 | 15,750 | 79.5 | 14,350 | | | | | 50 | 68 | 1,850 | 72 | 1,850 |
| 16 | 54 | 16,700 | 68 | 15,200 | 74 | 13,850 | 77.5 | 12,650 | | | | | 55 | 65 | 1,500 | 70 | 1,600 |
| 20 | 43 | 13,400 | 61 | 12,200 | 69.5 | 11,250 | 74.5 | 10,350 | 77.5 | 9,550 | 80 | 7,450 | 60 | 62.5 | 1,300 | 67.5 | 1,350 |
| 25 | 25 | 9,700 | 54 | 9,700 | 64 | 8,950 | 70 | 8,250 | 74 | 7,650 | 77 | 7,100 | 65 | 60 | 1,100 | 65 | 1,050 |
| 30 | | | 45 | 7,900 | 58.5 | 7,350 | 66 | 6,650 | 70.5 | 6,150 | 74 | 5,850 | 70 | 57 | 750 | 63 | 950 |
| 35 | | | 35 | 6,300 | 53 | 6,100 | 61.5 | 5,600 | 67 | 5,200 | 71 | 4,900 | 75 | 54.5 | 600 | 60.5 | 800 |
| 40 | | | 20 | 4,600 | 46 | 5,100 | 56.5 | 4,750 | 63 | 4,400 | 67.5 | 4,250 | 80 | | | 58 | 600 |
| 45 | | | | | 38 | 4,250 | 51.5 | 4,050 | 59.5 | 3,800 | 64.5 | 3,650 | | | | | |
| 50 | | | | | 28.5 | 3,400 | 46 | 3,450 | 55 | 3,250 | 61 | 3,150 | | | | | |
| 55 | | | | | 14 | 2,200 | 40 | 2,900 | 51 | 2,800 | 57.5 | 2,650 | | | | | |
| 60 | | | | | | | 33 | 2,350 | 46.5 | 2,400 | 54 | 2,300 | | | | | |
| 65 | | | | | | | 24 | 1,800 | 41 | 2,000 | 50 | 1,850 | | | | | |
| 70 | | | | | | | 6.5 | 700 | 35.5 | 1,600 | 46 | 1,650 | | | | | |
| 75 | | | | | | | | | 29 | 1,250 | 42 | 1,350 | | | | | |
| 80 | | | | | | | | | 20 | 800 | 37 | 1,050 | | | | | |
| 85 | | | | | | | | | | | 32 | 800 | | | | | |
| 90 | | | | | | | | | | | 25 | 500 | | | | | |
| | 0 | 5,100 | 0 | 2,300 | 0 | 950 | | | | | | | | | | | |
| ADD TO CAPACITIES WHEN NO JIB STOWED (lb) | | 800 | | 600 | | 450 | | 350 | | 300 | | 250 | | | | | |

LOADLINE EQUIPMENT DEDUCT (lb)

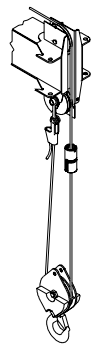
- Downhaul weight _____ 150
- One sheave block _____ 305
- Two sheave block _____ 355
- Three sheave block _____ 575

1 PART LINE



MAX. PULL
7,700 lb

2 PART LINE



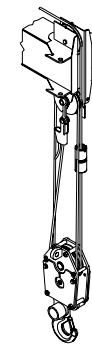
MAX. PULL
15,400 lb

3 PART LINE



MAX. PULL
23,100 lb

4 PART LINE



MAX. PULL
30,800 lb

5 PART LINE



MAX. PULL
38,500 lb

6 PART LINE



MAX. PULL
46,000 lb

NOTICE

- Do not deadhead line block against boom tip when extending boom.
- Keep at least 3 wraps of loadline on drum at all times.
- Use only 9/16" diameter rotation resistant cable with 38,500 lb breaking strength on this machine.
- Maximum capacity with "burst of speed" is 3,000 lb.