









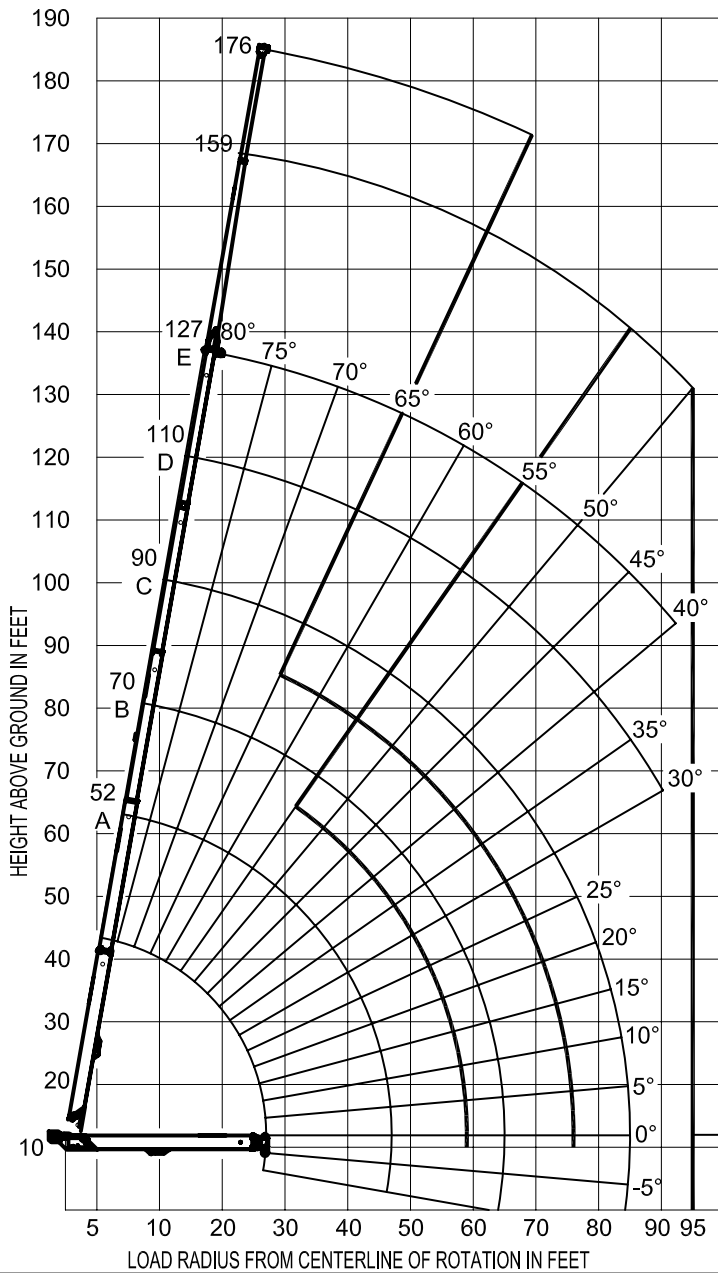
**RANGE CHART - MAIN BOOM + JIB, FULL-SPAN OUTRIGGERS**



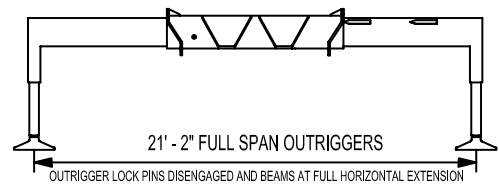
**MODEL 3600**

**127-ft BOOM**

**RANGE DIAGRAM WITH FULL SPAN OUTRIGGERS**



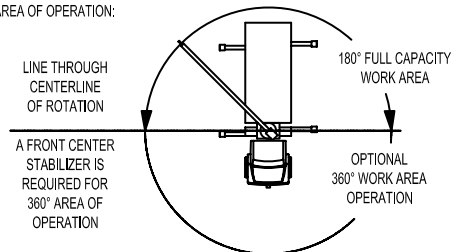
**BOOM DEFLECTION NOT SHOWN**



**NOTE:**

1. Operate jib by radius when main boom is fully extended. Increase boom angle if necessary to maintain load radius.
2. When boom is retracted, operate jib by boom angles. Do not exceed any rated jib capacities at reduced boom lengths.
3. Capacities do not exceed 85% stability.
4. Load ratings above bold line are structurally limited.
5. Personnel handling is allowed only with full span outriggers.
6. Boom load ratings are based on loaded boom radius. Loaded boom angles are given as reference only.

**AREA OF OPERATION:**



**STABILITY LIMIT LINE (NO LOAD)**

CRANE MEETS ASME B30.5 REQUIREMENTS AT TIME OF MANUFACTURE

DO NOT PAINT OVER ANY LABELS

1172320 022311



Elliott Equipment Company  
3514 South 25th Street  
Omaha, NE 68105  
Phone: 402-592-4500  
Fax: 402-592-4553  
Email: sales@elliottequip.com

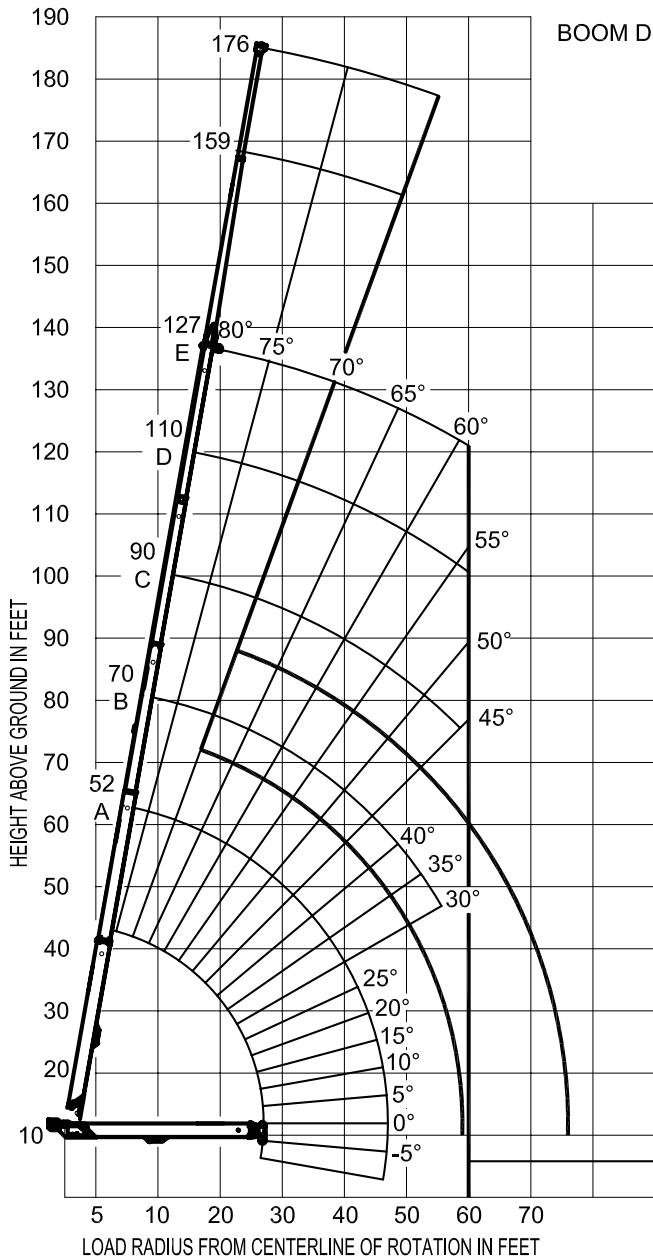
**Built for You.**  
www.elliottequip.com

**RANGE CHART - MAIN BOOM + JIB, MID-SPAN OUTRIGGERS**

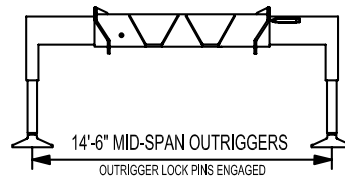


**MODEL 3600 127-ft BOOM**

**RANGE DIAGRAM WITH OUTRIGGERS IN MID-SPAN POSITION**



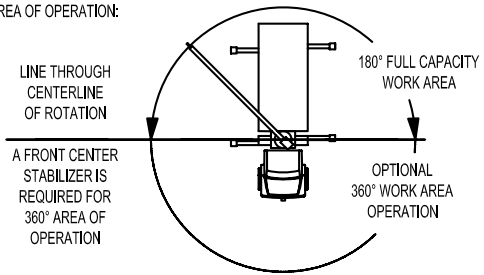
BOOM DEFLECTION NOT SHOWN



**NOTE:**

1. Operate jib by radius when main boom is fully extended. Increase boom angle if necessary to maintain load radius.
2. When boom is retracted, operate jib by boom angles. Do not exceed any rated jib capacities at reduced boom lengths.
3. Capacities do not exceed 85% stability.
4. Load ratings above bold line are structurally limited.
5. Personnel handling is allowed only with full span outriggers.
6. Boom load ratings are based on loaded boom radius. Loaded boom angles are given as reference only.

**AREA OF OPERATION:**



**STABILITY LIMIT LINE (NO LOAD)**

CRANE MEETS ASME B30.5 REQUIREMENTS AT TIME OF MANUFACTURE

DO NOT PAINT OVER ANY LABELS

1172320 022311



Elliott Equipment Company  
3514 South 25th Street  
Omaha, NE 68105  
Phone: 402-592-4500  
Fax: 402-592-4553  
Email: sales@elliottequip.com

**Built for You.**  
www.elliottequip.com

**RECOMMENDED CHASSIS SPECIFICATIONS**

|                                | 36127R BoomTruck   |
|--------------------------------|--|
| Wheelbase (WB)                 | 286" / 726 cm  |
| Cab to Axle (CA)               | 200" / 508 cm  |
| Cab to End of Frame (EOF)      | 320" / 813 cm  |
| Frame Section Modulus          | 30.0 in <sup>3</sup> -110,000 psi / 492 cm <sup>3</sup> -758,428 kPa |
| Front Axle Gross Weight Rating | 20,000 lb / 9072 kg  |
| Rear Axle Gross Weight Rating  | 53,200 lb / 24 131 kg (13,200 lb Pusher Axle)                        |
| Integral Front Frame Rails     | Required for Front Stabilizer  |

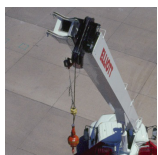
Chassis data is minimum general requirements-not for engineering.  
 Actual dimensions and truck data will depend on truck selection and axle configuration.  
 \*Minimum chassis weight is required to meet 85% stability requirements.

**OPTIONS**



**Radio Remote Control**

Interference protected radio remotes let you get closer to your work and have full control over your machine. Includes battery charging feature and optional LMI screen.



**Pin-On Jib Attachments**

Two piece telescoping jib with material handling and basket attachment capabilities. Stows on the side of the boom for easy placement while on the worksite.



**Hydraulic Oil Cooler**

Add a hydraulic oil cooler to assist with high duty cycle job applications.



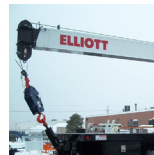
**Automatic Safety Rotation Lockout**

“Short-jack” your BoomTruck by adding an automatic safety lockout to prevent boom movement over the side where outriggers are not fully extended.



**Tool Boxes**

Optional tool boxes and bed storage can accommodate any storage need for tools, work materials and more.



**Hook Block for Multi-Part Line**

Elliott can install a 2-3 part hook block or a 4 part-hook block to improve lifting capabilities. The block can be stored towards the front of the bed.



**Gravity Levelled Basket**

Elliott’s new 600 lb capacity 2-man platform features a hydraulic yoke lifting system for easy attachment to the boom tip. Fully OSHA compliant and heavy duty.



**Body Mounted Hose Reels and Circuits**

Let us work with you to customize your tool compatibility by adding hose reels or hydraulic circuits to the crane bed.