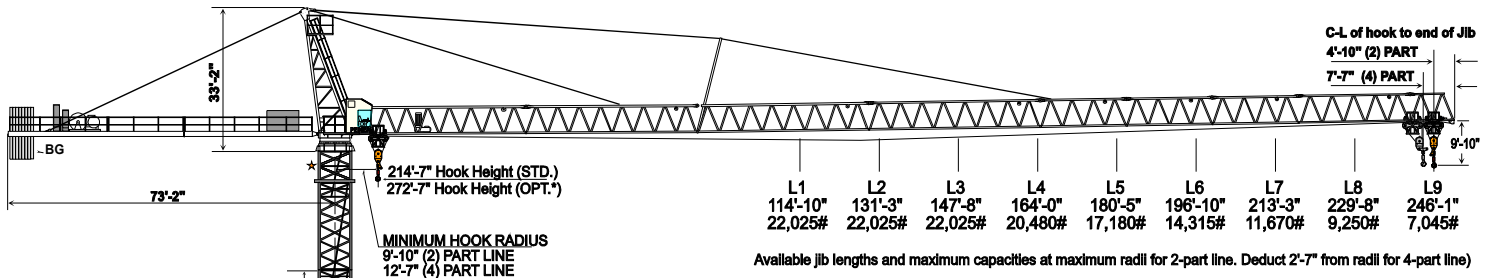




PEINER SK 415 Hammerhead Tower Crane 22,025 - 44,050 lbs. (10-20t) Capacity

SPECIFICATIONS



HOOK HEIGHT TABLE

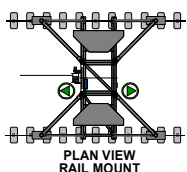
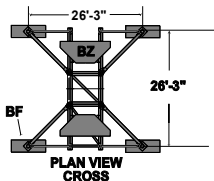
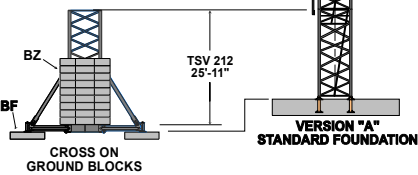
★Version "A" (Without TSK212 Section)		Version "A" (With TSK212 Section)		Cross and Rail Mount (Without TSK212 Section)	
TOWER TYPE TS212.1	HOOK HEIGHT ft/m	TOWER TYPE TS212.1 +TSK212	HOOK HEIGHT ft/m	ADD ONE TSV212 PLUS BELOW	HOOK HEIGHT ft/m
11XTS212.1	208'-0"/63.4m	11XTS212.1	214'-7"/65.4m	-----	-----
10XTS212.1	188'-8"/57.5m	10XTS212.1	195'-3"/59.5m	10XTS212.1	218'-6"/66.6m
9XTS212.1	169'-3"/51.6m	9XTS212.1	175'-10"/53.6m	9XTS212.1	199'-2"/60.7m
8XTS212.1	149'-11"/45.7m	8XTS212.1	156'-6"/47.7m	8XTS212.1	179'-9"/54.8m
7XTS212.1	130'-7"/39.8m	7XTS212.1	137'-2"/41.8m	7XTS212.1	160'-5"/48.9m
6XTS212.1	111'-3"/33.9m	6XTS212.1	117'-10"/35.9m	6XTS212.1	141'-1"/43.0m
5XTS212.1	91'-10"/28.0m	5XTS212.1	98'-5"/30.0m	5XTS212.1	121'-9"/37.1m
4XTS212.1	72'-6"/22.1m	4XTS212.1	79'-1"/24.1m	4XTS212.1	102'-4"/31.2m
3XTS212.1	53'-2"/16.2m	3XTS212.1	59'-9"/18.2m	3XTS212.1	83'-10"/25.3m
2XTS212.1	33'-10"/10.3m	2XTS212.1	40'-5"/12.3m	2XTS212.1	63'-8"/19.4m
1XTS212.1	14'-9"/4.5m	1XTS212.1	21'-4"/8.5m	1xTS212.1	44'-3"/13.5

The above uses standard FF 212 anchor stools.

★ The TSK 212 section MUST be installed for any top climbing applications.

* Lower climbing unit if utilized.

NOTE:
ADD 6'-7" TO THE ABOVE H.H.
IF TSK212 SECTION IS UTILIZED.

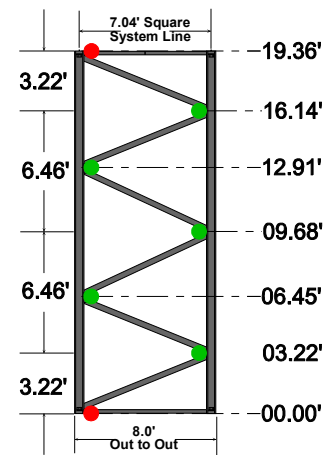
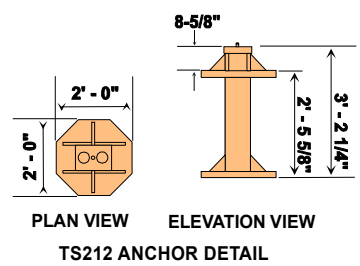
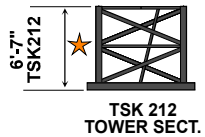
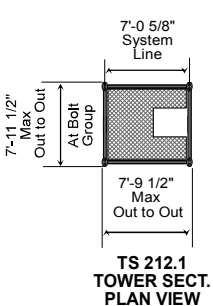
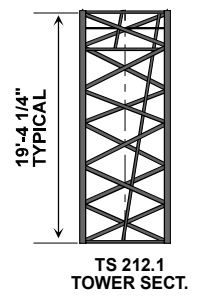
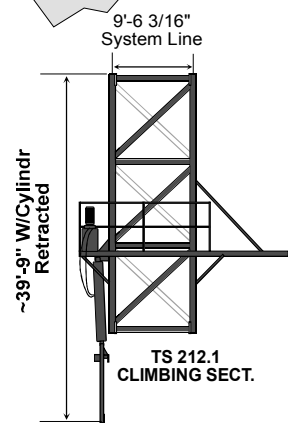
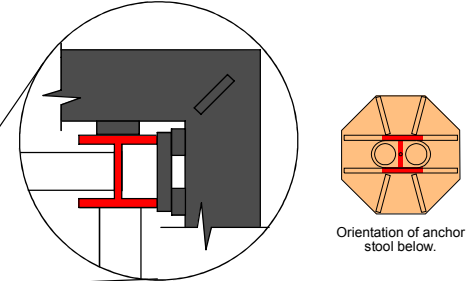
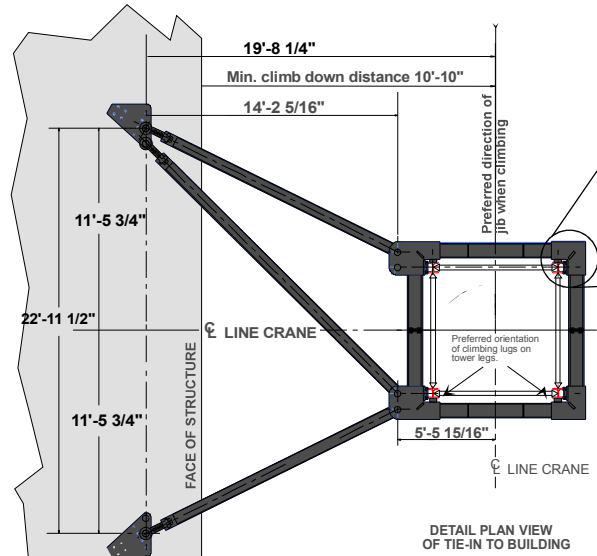
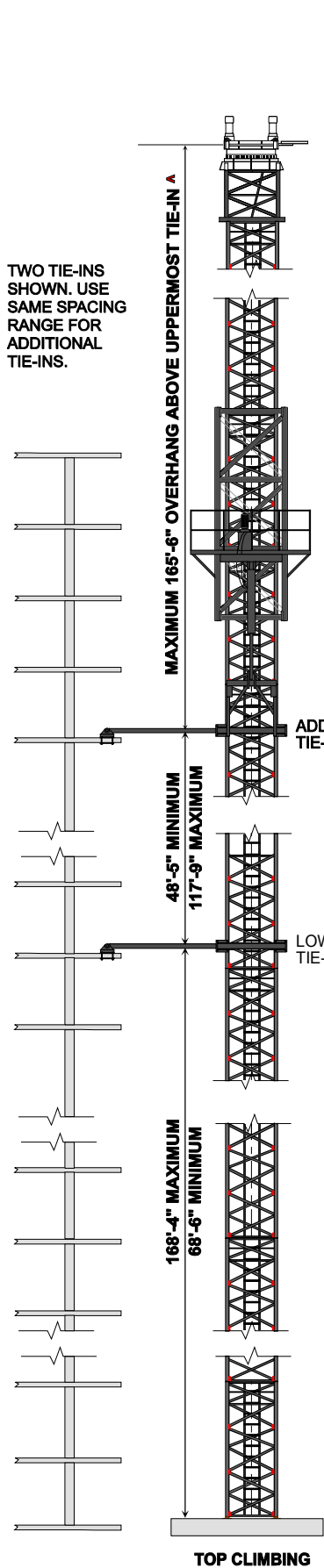


simple, available and cost effective

LIFTING

CLIMBING CONFIGURATIONS

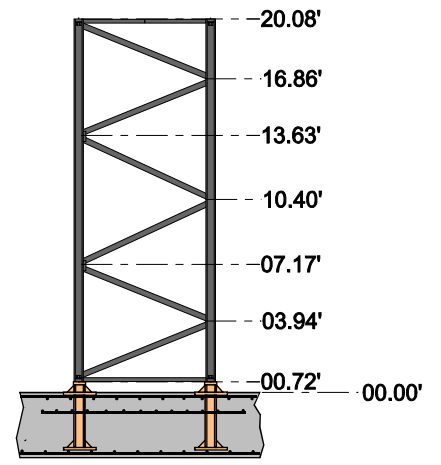
TWO TIE-INS SHOWN. USE SAME SPACING RANGE FOR ADDITIONAL TIE-INS.



TYPICAL TS212 TOWER SECTION ONLY (ELEVATIONS)

● TIE-IN AT INTERIOR TOWER PANEL POINTS ONLY.

● DO NOT TIE-IN AT TOWER CONNECTIONS.



★ (Must be installed for any top climbing applications.)

TECHNICAL DATA

Speeds

FU 8-200/4		v = 0 → ~ 265 fpm (80 m / min.)	1 x 12.2 HP 1 x 9.0 KW
SR 10-190/3		v = 0 → ~ 115 fpm (36 m / min.)	4 x 10.2 HP 4 x 7.5 KW
K WB 120/4		v = 0 → .75 rpm (min ⁻¹)	L1, L2 L3, L4, L5, L6 2 x 9.4 HP 2 x 7.0 KW 3 x 9.4 HP 3 x 7.0 KW

2-Part Line		HH* max.= 1,000' (304m)		4-Part Line		HH* max.= 500' (152m)		5 - Layers		480 V / 60 Hz / 3 ph	
(Standard) Type SR WB 66-100/4F [108 HP] [79 kW]		2-Part Line	→ 444 fpm 134 m/min	5 500 lbs 2 500 kg	4-Part Line	→ 222 fpm 67 m/min	11 000 lbs 5 000 kg	Total motor output ~155 HP without SR 10-190/3 ~114 kW Connected power 170 kVA			
			→ 276 fpm 84 m/min	9 300 lbs 4 200 kg		→ 138 fpm 42 m/min	18 600 lbs 8 400 kg				
			→ 180 fpm 54 m/min	15 700 lbs 7 100 kg		→ 90 fpm 27 m/min	31 400 lbs 14 200 kg				
			→ 108 fpm 34 m/min	22 000 lbs 10 000 kg		→ 54 fpm 17 m/min	44 000 lbs 20 000 kg				

2-Part Line		HH* max.= 1,160' (353m)		4-Part Line		HH max.= 580' (177m)		6 - Layers		* Based on full jib lengths	
(Optional) Type SR WB 102-125/4F [167 HP] [122 kW]		2-Part Line	→ 444 fpm 134 m/min	7 700 lbs 3 500 kg	4-Part Line	→ 222 fpm 67 m/min	15 400 lbs 7 000 kg	Total motor output ~213 HP without SR 10-190/3 ~157 kW Connected power 240 kVA			
			→ 276 fpm 84 m/min	13 200 lbs 6 000 kg		→ 138 fpm 42 m/min	26 400 lbs 12 000 kg				
			→ 180 fpm 54 m/min	22,000 lbs 10,000 kg		→ 90 fpm 27 m/min	44,000 lbs. 20,000 kgs.				
			→ 108 fpm 34 m/min	27,557 lbs 12,500 kg		→ 54 fpm 17 m/min	55,115 lbs. 25,000 kg.				

NOTE:

At 440-480V/60 Hz the power of the drive units are increased by ~10%-20%. And the speeds by ~ 20%. Excluded are FC drives.

Counterweight for SR WB 66-100/4f (108HP) Hoist unit

Jib		L1	L2	L3	L4	L5	L6	L7	L8	L9
Counterweight BG	lbs	41,800	41,800	47,600	47,600	47,600	54,400	54,400	54,400	54,400
	t	18.6	18.6	21.7	21.7	21.7	24.8	24.8	24.8	24.8
Counterweight BG	lbs	6 x 6800	6 x 6800	7 x 6800	7 x 6800	7 x 6800	8 x 6800	8 x 6800	8 x 6800	8 x 6800
	t	6 x 3.1	6 x 3.1	7 x 3.1	7 x 3.1	7 x 3.1	8 x 3.1	8 x 3.1	8 x 3.1	8 x 3.1

Counterweight for SR WB 102-125/4f (167HP) Hoist unit

Jib		L1	L2	L3	L4	L5	L6	L7	L8	L9
Counterweight BG	lbs	41,800	41,800	47,600	47,600	47,600	54,400	54,400	54,400	54,400
	t	18.6	18.6	21.7	21.7	21.7	24.8	24.8	24.8	24.8
Counterweight BG	lbs	6 x 6800	6 x 6800	7 x 6800	7 x 6800	7 x 6800	8 x 6800	8 x 6800	8 x 6800	8 x 6800
	t	6 x 3.1	6 x 3.1	7 x 3.1	7 x 3.1	7 x 3.1	8 x 3.1	8 x 3.1	8 x 3.1	8 x 3.1

Ballast for use with Cross

HH	ft m	50'-10" 15.5 m	70'-2" 21.4 m	89'-7" 27.3 m	108'-11" 33.2 m	128'-3" 39.1 m	147'-8" 45.0 m	167'-0" 50.9 m	186'-4" 56.8 m	205'-8" 62.7 m	225'-1" 68.6 m
Central Ballast Block BZ	lbs	174,600	174,600	174,600	174,600	174,600	174,600	174,600	203,700	203,700	232,800
	t	79.2	79.2	79.2	79.2	79.2	79.2	79.2	92.4	92.4	105.6
Foundation Block BF	lbs	12 x 14,550	12 x 14,550	12 x 14,550	12 x 14,550	12 x 14,550	12 x 14,550	12 x 14,550	14 x 14,550	16 x 14,550	16 x 14,550
	t	12 x 6.6	12 x 6.6	12 x 6.6	12 x 6.6	12 x 6.6	12 x 6.6	12 x 6.6	14 x 6.6	16 x 6.6	16 x 6.6
Foundation Block BF	lbs	8 x 14,550	8 x 14,550	8 x 14,550	8 x 14,550	8 x 14,550	8 x 14,550	8 x 14,550	8 x 14,550	10 x 14,550	12 x 14,550
	t	8 x 6.6	8 x 6.6	8 x 6.6	8 x 6.6	8 x 6.6	8 x 6.6	8 x 6.6	8 x 6.6	10 x 6.6	12 x 6.6
Foundation Block BF	lbs	4 x 14,550	4 x 14,550	4 x 14,550	4 x 14,550	4 x 14,550	4 x 14,550	4 x 14,550	4 x 14,550	4 x 14,550	4 x 14,550
	t	4 x 6.6	4 x 6.6	4 x 6.6	4 x 6.6	4 x 6.6	4 x 6.6	4 x 6.6	4 x 6.6	4 x 6.6	4 x 6.6

NOTE: We reserve the right to amend these specifications at any time without notice. The only warranty applicable is our standard written warranty applicable to the particular product and sale. We make no other warranty, expressed or implied.

Information contained within is of a general nature and the operators manual should be consulted and adhered to. *Any printed weights should be confirmed in the field and adjustments made to lifting equipment if required. Do not scale any information within this specification sheet.

LOAD CHARTS FOR 2-PART LINE (US / METRIC)

LOAD CHART (pounds/feet)

2-PART LINE

WB 66-100/4F ~108 HP (79KW) Hoist Winch

"A"	7045	9250	11670	14315	17180	20480	22025	22025	22025
"B"	246	229.6	213.2	196.8	180.4	164	147.6	131.2	114.8
"C"	103.6	116.8	128.5	139.1	147.6	155.1	147.6	131.2	114.8

Hook Radius [ft.]	AVAILABLE JIB LENGTHS								
	L9	L8	L7	L6	L5	L4	L3	L2	L1
▼	246	229.6	213.2	196.8	180.4	164	147.6	131.2	114.8
9.8	22025	22025	22025	22025	22025	22025	22025	22025	22025
101.7	22025	22025	22025	22025	22025	22025	22025	22025	22025
105.0	21880	22025	22025	22025	22025	22025	22025	22025	22025
108.2	21085	22025	22025	22025	22025	22025	22025	22025	22025
111.5	20340	22025	22025	22025	22025	22025	22025	22025	22025
114.8	19635	22025	22025	22025	22025	22025	22025	22025	22025
118.1	18975	21770	22025	22025	22025	22025	22025	22025	
121.4	18350	21065	22025	22025	22025	22025	22025	22025	
124.6	17755	20400	22025	22025	22025	22025	22025	22025	
127.9	17195	19770	22025	22025	22025	22025	22025	22025	
131.2	16680	19170	21480	22025	22025	22025	22025	22025	
134.5	16155	18605	20855	22025	22025	22025	22025		
137.8	15670	18060	20260	22025	22025	22025	22025		
141.0	15215	17545	19695	21575	22025	22025	22025		
144.3	14775	17055	19150	20990	22025	22025	22025		
147.6	14355	16585	18635	20430	21905	22025	22025		
150.9	13955	16135	18140	19900	21335	22025			
154.2	13575	15705	17665	19385	20795	22025			
157.4	13210	15295	17215	18900	20275	21505			
160.7	12855	14900	16780	18430	19780	20985			
164.0	12520	14520	16365	17980	19300	20480			
167.3	12195	14160	15965	17545	18840				
170.6	11885	13810	15580	17130	18400				
173.8	11585	13475	15210	16735	17980				
177.1	11300	13150	14855	16350	17570				
180.4	11020	12840	14510	15980	17180				
183.7	10755	12540	14180	15620					
187.0	10495	12250	13865	15275					
190.2	10250	11970	13555	14945					
193.5	10010	11700	13260	14625					
196.8	9775	11440	12970	14315					
200.1	9550	11190	12695						
203.4	9335	10945	12425						
206.6	9125	10710	12165						
209.9	8920	10480	11915						
213.2	8725	10260	11670						
216.5	8535	10045							
219.8	8350	9835							
223.0	8170	9635							
226.3	7995	9440							
229.6	7825	9250							
229.6	7825	9250							
232.9	7660								
236.2	7500								
239.4	7345								
242.7	7195								
246.0	7045								

"A"= Load at maximum radius (lbs.)
 "B"= Maximum radius (ft.)
 "C"= Radius with maximum load (ft.)

LOAD CHART (metric tons/meters)

2-PART LINE

WB 66-100/4F ~108 HP (79KW) Hoist Winch

"A"	3.2	4.2	5.3	6.5	7.8	9.3	10	10	10
"B"	75	70	65	60	55	50	45	40	35
"C"	31.6	35.6	39.2	42.4	45.0	47.3	45	40	35

Hook Radius [m.]	AVAILABLE JIB LENGTHS								
	L9	L8	L7	L6	L5	L4	L3	L2	L1
▼	(75m)	(70m)	(65m)	(60m)	(55m)	(50m)	(45m)	(40m)	(35m)
3.00	10.00	10.00	10.00	10.00	10.00	10.00	10.00	10.00	10.00
31.00	10.00	10.00	10.00	10.00	10.00	10.00	10.00	10.00	10.00
32.00	9.93	10.00	10.00	10.00	10.00	10.00	10.00	10.00	10.00
33.00	9.57	10.00	10.00	10.00	10.00	10.00	10.00	10.00	10.00
34.00	9.23	10.00	10.00	10.00	10.00	10.00	10.00	10.00	10.00
35.00	8.92	10.00	10.00	10.00	10.00	10.00	10.00	10.00	10.00
36.00	8.62	9.88	10.00	10.00	10.00	10.00	10.00	10.00	
37.00	8.33	9.57	10.00	10.00	10.00	10.00	10.00	10.00	
38.00	8.06	9.26	10.00	10.00	10.00	10.00	10.00	10.00	
39.00	7.81	8.98	10.00	10.00	10.00	10.00	10.00	10.00	
40.00	7.56	8.70	9.75	10.00	10.00	10.00	10.00	10.00	
41.00	7.34	8.45	9.47	10.00	10.00	10.00	10.00		
42.00	7.12	8.20	9.20	10.00	10.00	10.00	10.00		
43.00	6.91	7.97	8.94	9.80	10.00	10.00	10.00		
44.00	6.71	7.74	8.70	9.53	10.00	10.00	10.00		
45.00	6.52	7.53	8.46	9.28	9.94	10.00	10.00		
46.00	6.34	7.33	8.24	9.03	9.69	10.00			
47.00	6.16	7.13	8.02	8.80	9.44	10.00			
48.00	6.00	6.94	7.82	8.58	9.21	9.77			
49.00	5.84	6.77	7.62	8.37	8.98	9.53			
50.00	5.69	6.59	7.43	8.16	8.76	9.30			
51.00	5.54	6.43	7.25	7.97	8.56				
52.00	5.40	6.27	7.07	7.78	8.36				
53.00	5.26	6.12	6.91	7.60	8.16				
54.00	5.13	5.97	6.74	7.42	7.98				
55.00	5.01	5.83	6.59	7.26	7.80				
56.00	4.88	5.69	6.44	7.09					
57.00	4.77	5.56	6.29	6.94					
58.00	4.65	5.44	6.16	6.79					
59.00	4.55	5.31	6.02	6.64					
60.00	4.44	5.20	5.89	6.50					
61.00	4.34	5.08	5.76						
62.00	4.24	4.97	5.64						
63.00	4.14	4.86	5.52						
64.00	4.05	4.76	5.41						
65.00	3.96	4.66	5.30						
66.00	3.88	4.56							
67.00	3.79	4.47							
68.00	3.71	4.38							
69.00	3.63	4.29							
70.00	3.55	4.20							
70.00	3.55	4.20							
71.00	3.48								
72.00	3.41								
73.00	3.34								
74.00	3.27								
75.00	3.20								

"A"= Load at maximum radius (tons.)
 "B"= Maximum radius (m.)
 "C"= Radius with maximum load (m.)

WEIGHTS AND MEASURES *

Description	Illustration	Dimensions ft. / m.			Weight lbs./ tons (metric)	Assembled Components Information Length and Weight*
		L.	W.	H.		
TS 212 and 212.1 Anchor Stools		3'-2" .965m	2'-0" .609m	2'-0" .609m	850lbs. .385t	
TS 213 and 213.1 Anchor Stools		5'-5" 1.65m	1'-10" .559m	1'-10" .559m	1100lbs. .499t	
U821 Base Cross for TS212 & 212.1 Tower		34'-7" 10.54m	9'-1" 2.76m	2'-9" .838m	17,100lbs. 7.76t	
TSV 212.1 Tower Section for U821 cross		31'-2" 9.50m	9'-10" 3.00m	10'-0" 3.05m	20,500lbs. 9.30t	
TS 213 and 213.1 Tower Section		19'-6" 5.94m	8'-0" 2.44m	8'-0" 2.44m	9,950lbs. 4.52t	
TS 213 to TS212 Tower Transition Section		19'-6" 5.94	8'-0" 2.44m	8'-0" 2.44m	9,750lbs. 4.42t	
TS 212 and 212.1 Tower Section		19'-6" 5.94m	8'-0" 2.44m	8'-0" 2.44m	9,300lbs. 4.22t	
TSK 212 Tower Section		8'-0" 2.44m	9'-10" 3.00m	6'-8" 2.03m	6,175lbs. 2.80t	
TSK 212 Tie-in Collar		12'-2" 3.70m	10'-2" 3.10m	1'-7" 0.48m	?,???,lbs. ?,???,t	
TS 212 Top Climbing Section (w / items inside)		29'-3" 8.92m	11'-6" 3.50m	11'-6" 3.50m	25,000lbs. 11.34t	
TS 213/212 Top Climbing Section (w / items inside)		29'-3" 8.92m	11'-6" 3.50m	11'-6" 3.50m	25,050lbs. 11.36t	
Turntable only w / 3 swing motors		11'-4" 3.45m	7'-8" 2.34m	6'-7" 2.01m	23,850lbs. 10.80t	
Turntable Top portion only w / 3 swing motors		11'-4" 3.45m	7'-8" 2.34m	4'-9" 1.45m	9,350lbs. 4.22t	
Turntable Race Bearing only		7'-2" 2.19m	7'-2" 2.19m	0'-6" 0.15m	3,250lbs. 1.40t	
Turntable Lower portion only DA 212		9'-10" 3.00m	7'-8" 2.34m	1'-8" 0.50m	11,250lbs. 4.90t	
Operator Cabin, Catwalk and Electric panel		8'-2" 2.50m	6'-9" 2.06m	8'-6" 2.60m	3,750lbs. 1.730	
Turntable Complete w/cabin and 3 swing motors		17'-2" 5.23m	14'-2" 4.32m	12'-4" 3.75m	27,600lbs. 12.52t	
Towertop w / catwalk and ladder		27'-1" 8.26m	6'-5" 2.00m	6'-6" 2.00m	9,600lbs. 4.36t	
108 HP Machinery Deck w/o wire rope		9'-2" 2.80m	8'-5" 2.57m	5'-7" 1.70m	7,500lbs. 3.40t	
108 HP Machinery Deck w/ Rear portion of Counterjib		38'-1" 11.61	9'-2" 2.80m	6'-7" 2.01m	17,500lbs. 7.94t	
Front portion of Counterjib		31'-10" 9.70	6'-8" 2.03m	5'-7" 1.70m	6,610lbs. 2.30t	
108 HP Counterjib complete less wire rope		69'-11" 21.31	9'-2" 2.80m	6'-7" 2.01m	26,500lbs. 12.02t	
Jib Section No. 1 w / Trolley machinery		38'-11" 11.86	6'-6" 2.00m	7'-3" 2.20m	6,650lbs. 3.01t	
Jib Section No. 2		40'-6" 12.34	6'-6" 2.00m	7'-3" 2.20m	5,175lbs. 2.35t	
Outer Jib Support "A" Frame		21'-7" 6.58	5'-5" 1.65m	4'-8" 1.42m	650lbs. 0.30t	
Jib Section No. 3		38'-10" 11.84	6'-6" 2.00m	7'-7" 2.31m	4,750lbs. 2.16t	
Jib Section No. 4		18'-8" 5.69	6'-6" 2.00m	6'-3" 1.91m	2,000lbs. 0.91t	
Jib Section No. 5		35'-0" 10.67	6'-6" 2.00m	6'-11" 2.10m	4,000lbs. 1.82t	
Jib Section No. 6		35'-5" 10.80	6'-6" 2.00m	6'-4" 1.93m	3,000lbs. 1.36t	
Jib Section No. 7		33'-6" 10.21	6'-6" 2.00m	6'-3" 1.91m	2,150lbs. 0.98t	
Jib Section No. 8		17'-1" 5.69	6'-6" 2.00m	6'-2" 1.88m	1,750lbs. 0.80t	
Jib Tip Section		4'-6" 1.37	6'-8" 2.03m	4'-6" 1.37	850lbs. 0.39t	
Single (outer) Trolley for 2-Part Line		7'-4" 2.24m	5'-9" 1.73m	6'-0" 1.83m	1,750lbs. 0.80t	
Single Load Block for 2-Part Line		2'-9" 0.84	1'-0" 0.31m	4'-6" 1.37m	1,200lbs. 0.54t	
Double Trolley for 4-Part Line		14'-8" 4.47m	5'-9" 1.73m	6'-0" 1.83m	3,400lbs. 1.55t	
Dual Load Block for 4-Part Line		5'-6" 1.68	1'-0" 0.31m	4'-6" 1.37m	2,400lbs. 1.09t	
BG Counterweight Size 2		14'-8" 4.47m	0'-6" 0.15m	5'-1" 1.55m	6,800lbs. 3.09t	

108 HP Counterjib Complete (less Wire rope) **70'/21.33m - 26,500 lbs./ 12.02 t**
167 HP Counterjib Complete (less Wire rope) **70'/21.33m - 29,000 lbs./ 13.16 t**
22mm Wire rope weighs ~ **2.0 lbs/foot/2.7kg/m**

Inner jib with one trolley, load block, outer jib support "A" frame, and suspension cables **75'/22.86m - 17,135lbs./7.77t**

Outer jib for **L1 114'-10/35m** hook radius with suspension cables **42'/12.80m - 8,860lbs./4.00t**

Outer jib for **L2 131'-3/40m** hook radius with suspension cables **60'/18.29m - 10,860lbs./4.93t**

Outer jib for **L3 147'-8/45m** hook radius with suspension cables **76'/23.16m - 13,100lbs./5.97t**

Outer jib for **L4 164'-0/50m** hook radius with suspension cables **95'/28.96m - 15,410lbs./6.99t**

Outer jib for **L5 180'-5/55m** hook radius with suspension cables **111'/33.83m - 16,100lbs./7.30t**

Outer jib for **L6 196'-10/60m** hook radius with suspension cables **129'/39.32m - 18,410lbs./8.35t**

Outer jib for **L7 213'-3/65m** hook radius with suspension cables **145'/44.20m - 18,250lbs./8.28t**

Outer jib for **L8 229'-8/70m** hook radius with suspension cables **163'/49.68m - 19,710lbs./8.94t**

Outer jib for **L9 246'-1/75m** hook radius with suspension cables **180'/54.86m - 21,460lbs./9.74t**

We're **ALL** You need!

(800) 232 4100

* The specific operators manual shall be used for crane assembly/disassembly. Sizes and weights shown herein are for general illustration and are approximate in scope.