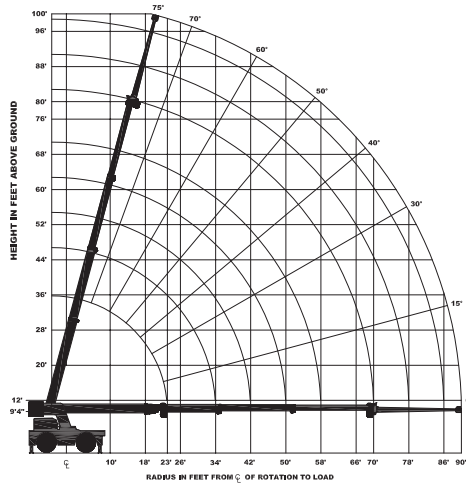


Load Chart US Standard



In and Down 360 capacities apply when operating over the sides or rear with beams at less than full extension.

For boom lengths between columns, use the next longer boom length column. For load radii between rows, use the next longest load radius row.

Load radius is the horizontal distance from the center of rotation of the unloaded crane to the vertical load line with load applied.

CAPACITIES APPLY TO OPERATION ON FIRM LEVEL SURFACE									
LOAD RADIUS FEET	MAIN BOOM OR EXTENSION CAPACITIES IN POUNDS								
	360° ROTATION				OVER FRONT				
	ON RUBBER	OUTRIGGERS OUT & DOWN	OUTRIGGERS MID & DOWN	OUTRIGGERS IN & DOWN	ON RUBBER	ON OUTRIGGERS			
8	17000	50000	47500	42000	24400	50000			
10	13200	42000	38000	28300	20300	42000			
12	10500	36000	31800	20600	17200	36000			
14	8500	35100	27300	16000	14700	35100			
16	6900	30100	23500	12800	12700	30100			
18	5600	23600	20300	10600	11100	23600			
20	4600	21100	17200	8800	9400	21100			
22	3700	19000	14400	7400	7900	19000			
24	3000	17100	11800	6300	6600	17100			
26	2300	15400	10600	5300	5600	15400			
28	1800	13300	8700	4600	4800	13300			
30	1300	12200	7600	3900	4100	12200			
32	1100	11200	7000	3300	3600	11200			
36	700	9100	5400	2300	2800	8900			
40	---	7400	4300	1600	2200	7400			
42	---	6800	3900	1300	2000	6800			
44	---	6200	3400	1100	1800	6100			
48	---	5400	2900	700	1400	5300			
52	---	4700	2600	---	1100	4700			
54	---	4400	2400	---	1000	4400			
56	---	4400	2400	---	900	4400			
60	---	4100	2000	---	---	4000			
64	---	3600	1600	---	---	3600			
68	---	3200	1300	---	---	3200			
72	---	2800	---	---	---	2700			
76	---	2400	---	---	---	2300			
80	---	2100	---	---	---	2100			
84	---	1900	---	---	---	1900			
88	---	1500	---	---	---	1500			
BOOM EXT.	20-FOOT BOOM EXTENSION CAPACITIES								
	BOOM EXT. OFFSET ANGLE	MAIN BOOM ANGLE							
		0°	15°	30°	40°	50°	60°	70°	75°
		0°	2600	2750	3000	3400	4100	5100	6200
15°	---	2500	2600	2700	2900	3300	4300	4800	
30°	---	---	2300	2400	2500	2700	3200	3400	

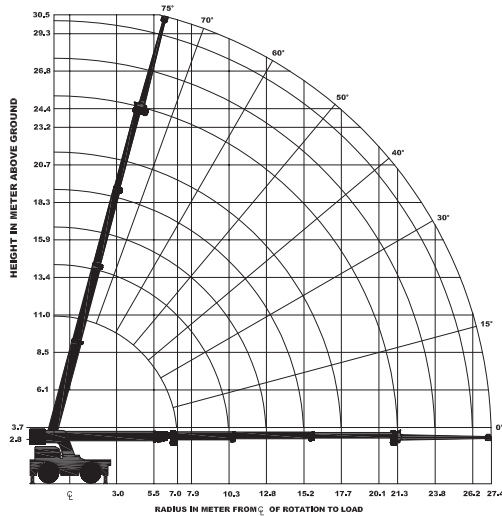
CAPACITIES ON OUTRIGGERS ARE 85% OF TIPPING LOADS. CAPACITIES ON RUBBER ARE 75% OF TIPPING LOADS. CAPACITIES BELOW BOLD LINE ARE LIMITED BY TIPPING. OTHER CAPACITIES ARE LIMITED BY STRUCTURAL OR HYDRAULIC CAPABILITY.

HYDRAULIC FUNCTIONS OPERATE AT MID-RANGE SPEED ON RUBBER OR IF CRANE IS NOT LEVEL.

BOOM EXTENSION MAY NOT LIFT LOADS ON RUBBER.

CAUTION: BOOM EXTENSION LOADS MUST NOT EXCEED MAIN BOOM CAPACITY. LOAD RADII BELOW DOUBLE LINES REQUIRE BOOM EXTENSION. DO NOT POSITION BOOM AT LOAD RADII WHERE "—" CAPACITIES ARE SHOWN. EXCEEDING CAPACITY RATINGS OR APPLYING SIDE LOADS TO THE BOOM OR BOOM EXTENSION IS MISUSE, HAZARDOUS, AND VOIDS WARRANTY.

Load Chart Metric



In and Down 360 capacities apply when operating over the sides or rear with beams at less than full extension.

For boom lengths between columns, use the next longer boom length column. For load radii between rows, use the next longest load radius row.

Load radius is the horizontal distance from the center of rotation of the unloaded crane to the vertical load line with load applied.

CAPACITIES APPLY TO OPERATION ON FIRM LEVEL SURFACE									
LOAD RADIUS M	MAIN BOOM OR EXTENSION CAPACITIES IN KILOGRAMS								
	360° ROTATION				OVER FRONT				
	ON RUBBER	OUTRIGGERS OUT & DOWN	OUTRIGGERS MID & DOWN	OUTRIGGERS IN & DOWN	ON RUBBER	ON OUTRIGGERS			
2.4	7711	22,680	21,546	19,051	11,068	22,680			
3.0	5,987	19,051	17,237	12,837	9,208	19,051			
3.7	4,763	16,329	14,424	9,344	7,802	16,329			
4.3	3,856	15,921	12,383	7,257	6,668	15,921			
4.9	3,130	13,653	10,659	5,806	5,761	13,653			
5.5	2,540	10,705	9,208	4,808	5,035	10,705			
6.1	2,087	9,571	7,802	3,992	4,264	9,571			
6.7	1,678	8,618	6,532	3,357	3,583	8,618			
7.3	1,361	7,756	5,352	2,858	2,994	7,756			
7.9	1,043	6,985	4,808	2,404	2,540	6,713			
8.5	816	6,033	3,946	2,087	2,177	5,851			
9.1	589	5,534	3,447	1,769	1,860	5,352			
9.6	499	5,080	3,175	1,497	1,633	5,080			
11	317	4,128	2,449	1,043	1,270	4,037			
12.2	---	3,357	1,950	725	997	3,357			
12.8	---	3,084	1,769	589	907	3,084			
13.4	---	2,812	1,542	499	816	2,767			
14.6	---	2,449	1,315	317	635	2,404			
15.9	---	2,132	1,179	---	499	2,132			
16.5	---	1,996	1,089	---	453	1,996			
17.1	---	1,996	1,089	---	408	1,996			
18.3	---	1,860	907	---	---	1,814			
19.5	---	1,633	725	---	---	1,633			
20.7	---	1,451	589	---	---	1,451			
22	---	1,270	---	---	---	1,225			
23.2	---	1,089	---	---	---	1,043			
24.4	---	952	---	---	---	952			
25.6	---	861	---	---	---	861			
26.8	---	680	---	---	---	680			
BOOM EXT.	9-METER BOOM EXTENSION CAPACITIES								
	MAIN BOOM ANGLE								
	BOOM EXT. OFFSET ANGLE	0°	15°	30°	40°	50°	60°	70°	75°
	0°	1,089	1,247	1,361	1,542	1,860	2,313	2,812	3,175
15°	---	1,247	1,179	1,225	1,315	1,497	2,812	2,177	
30°	---	---	1,043	1,089	1,134	1,225	1,451	1,542	

CAUTION: BOOM EXTENSION LOADS MUST NOT EXCEED MAIN BOOM CAPACITY. LOAD RADII BELOW DOUBLE LINES REQUIRE BOOM EXTENSION. DO NOT POSITION BOOM AT LOAD RADII WHERE "—" CAPACITIES ARE SHOWN. EXCEEDING CAPACITY RATINGS OR APPLYING SIDE LOADS TO THE BOOM OR BOOM EXTENSION IS MISUSE, HAZARDOUS, AND VOIDS WARRANTY.

CAPACITIES ON OUTRIGGERS ARE 85% OF TIPPING LOADS. CAPACITIES ON RUBBER ARE 75% OF TIPPING LOADS. CAPACITIES BELOW BOLD LINE ARE LIMITED BY TIPPING. OTHER CAPACITIES ARE LIMITED BY STRUCTURAL OR HYDRAULIC CAPABILITY.

HYDRAULIC FUNCTIONS OPERATE AT MID-RANGE SPEED ON RUBBER OR IF CRANE IS NOT LEVEL.

BOOM EXTENSION MAY NOT LIFT LOADS ON RUBBER.