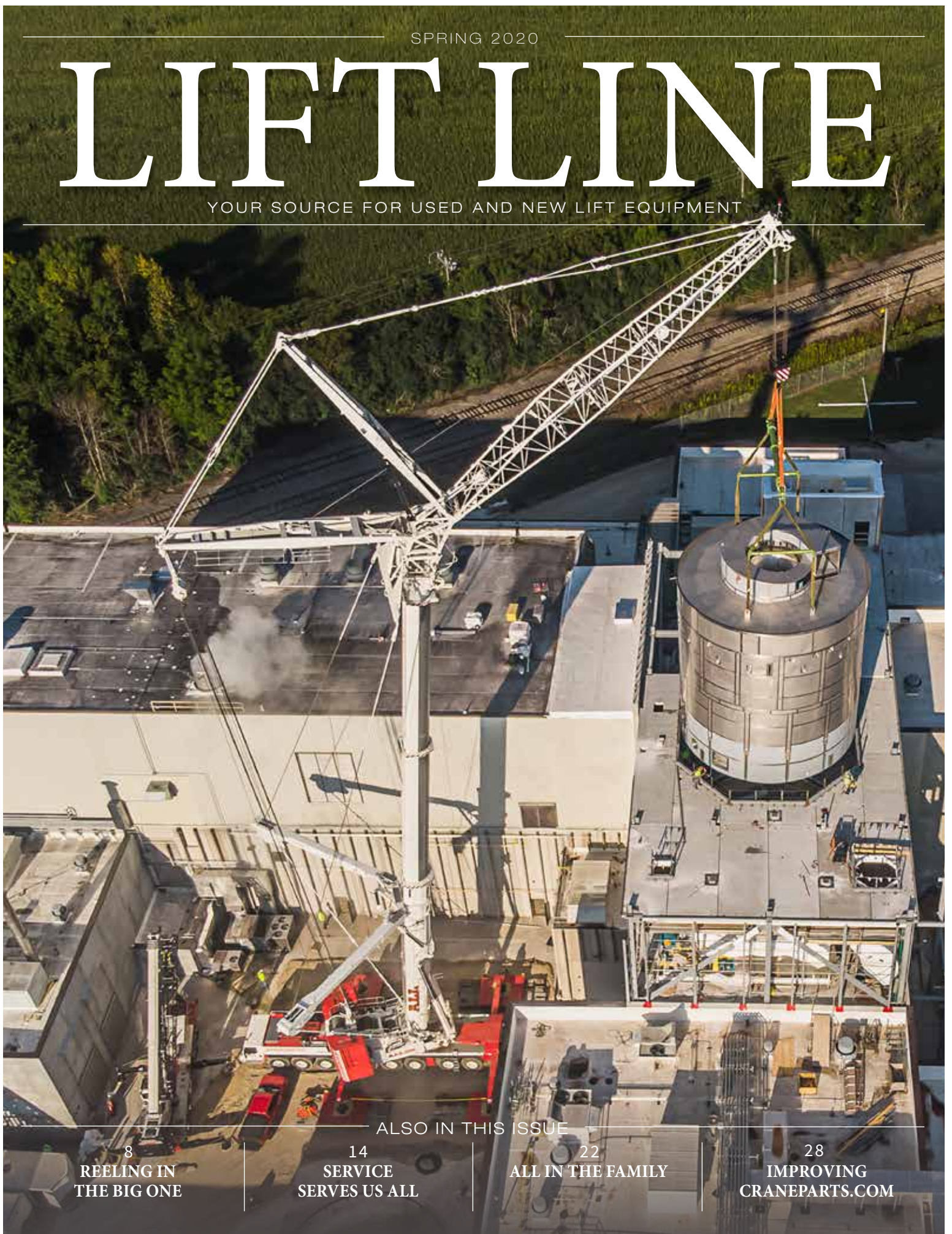


SPRING 2020

LIFT LINE

YOUR SOURCE FOR USED AND NEW LIFT EQUIPMENT



ALSO IN THIS ISSUE

8
REELING IN
THE BIG ONE

14
SERVICE
SERVES US ALL

22
ALL IN THE FAMILY

28
IMPROVING
CRANEPARTS.COM

Regional Sales Managers

US Northeast:

Shaune Rados
(216) 986-5190
Shaune.Rados@allcrane.com

US North & Northwest:

Joe Ruddell
(414) 831-6114
joe.ruddell@allcrane.com

US South & Outside of North America:

Steve Salvatore
(216) 986-5210
Steve.Salvatore@allcrane.com

Canada:

Peter Wright
(289) 628-1795
peter.wright@allcrane.com

About Lift Line

Lift Line is your guide to used equipment from an industry leader and North America's largest privately held crane and lift equipment rental and sales enterprise — the ALL Family of Companies.



Scan this QR code with your smartphone to jump to our equipment database online.

**SIGN UP
FOR EMAIL
UPDATES**



Sign up to receive emails featuring first looks at new & used equipment, articles, case studies and big announcements. Visit allcrane.com/LiftLine to sign up today.

While ALL Erection & Crane Rental Corp. and its affiliates endeavor to provide reliable information, the information contained herein is provided on an "AS-IS" and "AS AVAILABLE" basis and may include errors, omissions, or other inaccuracies. ALL makes no representation, warranties, or guarantees, expressed or implied, regarding the content in this publication.

© ALL Erection & Crane Rental Corp., an Equal Opportunity Employer

Contents

Departments

- 1 Making a Home with ALL
- 2 Say it in Six

Features

- 8 Reeling in the Big One
- 14 Service Serves Us All
- 22 All in the Family
- 28 Improving Craneparts.com
- BC Central Contractors Service Gets More "Central"

Equipment Listings

- 4 Rough-Terrain Cranes
- 6 Truck Cranes
- 10 Tower Cranes
- 12 Boom Trucks
- 18 All-Terrain Cranes
- 20 Crawler Cranes
- 26 Boom & Scissor Lifts and Material Handlers
- 30 Crane Parts
- 31 Industrial Cranes
- 32 Trucks and Trailers



Page 8



Page 14



Page 22



Page 28

Cover: Dawes Rigging & Crane Rental uses the mobility of the Liebherr LTM 1500-8.1 and the versatility of its VarioBase® outriggers to move in close in tight quarters to set a 121,000-pound dryer at a dairy production line in Wisconsin.

Making a Home With ALL

Even before I worked in the industry, cranes always fascinated me. I'm sure I'm not alone in this. I previously worked at the Chicago Board of Trade, and I would notice the various construction projects going on in the city on my drive. It always struck me how no two jobs were ever completely alike. I craved that kind of variety in my work.



When a friend mentioned that Central Contractors Service was hiring, I immediately threw my hat in the ring. That was nearly 20 years ago, and it's a decision I've never regretted.

Until very recently, I'd spent my entire ALL career with Central Contractors Service. I was the manager of the Alsip, Illinois, location until another opportunity came knocking. In November, I became general manager of ALL Sunshine Crane Rental Corp. of Orlando, Florida. Being a Northeast Illinois guy—accustomed to all the snow, cold weather, and bitter wind that comes with it—the climate of Florida will actually take some getting used to. But I think I'll manage!

Our branch covers a vast swath of the state, and construction is booming all over Florida. The state is growing by 300,000 new residents each year, and the total population is projected to reach 22 million by 2022. More companies are moving here to tap into the job pool, and all those people need places to live and shop—not to mention the infrastructure needed in the form of new roads, bridges, sewers, and wastewater treatments plants—so construction remains healthy across the board.

Even after all this time, cranes still fascinate me. I'm still invigorated by the work we get to do, the things we get to build, and the places where our work takes us. I hope I never lose that enthusiasm. I can't see how I ever could.

The word "Family" in the ALL Family of Companies is well-chosen, as it perfectly sums up our approach to business. It informs the way we take care of our own. It makes me think of the lessons I learned from everyone at Central Contractors Service and the overwhelming number of calls of support I received when I accepted my new position in Orlando.

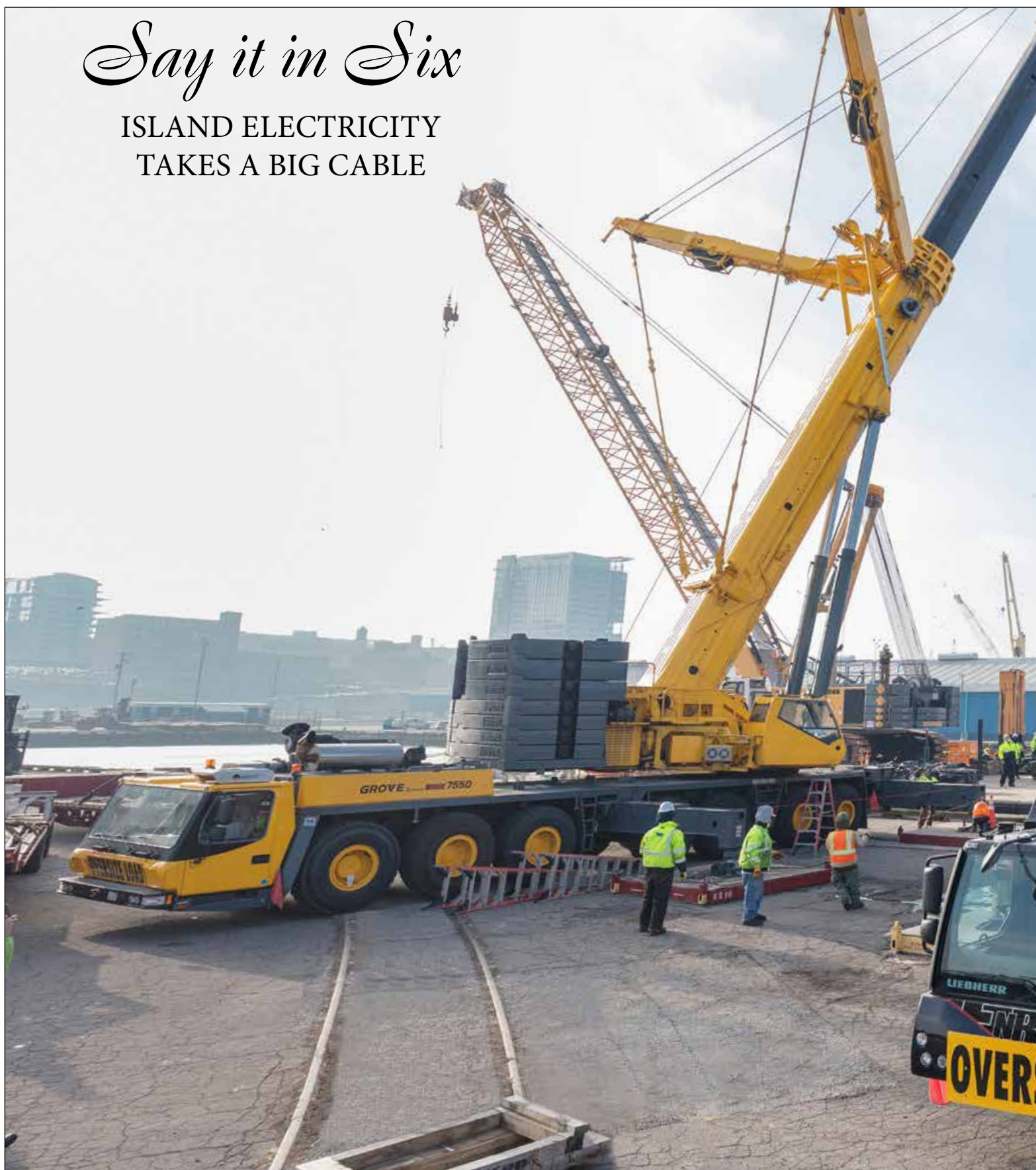
It's been an eventful two decades, but I've savored every minute. To me, ALL will always be home.

T.J. Wicklander,

T.J. Wicklander
General Manager,
ALL Sunshine Crane Rental Corp. of Orlando, Florida

Say it in Six

ISLAND ELECTRICITY
TAKES A BIG CABLE



Spring 2020



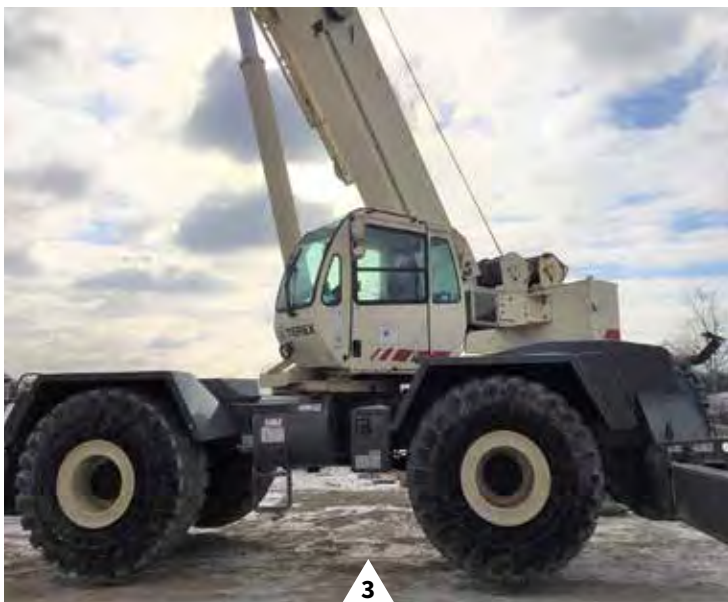
For more information on this job, see full article beginning on page 8.

SHOP ROUGH-TERRAIN CRANES from 22 - 165 USt

Grove RT9130E S/N 225229 2006, 130 USt, Cummins QSC8.3L Diesel, 160' Main Boom, 36'-59' Bi-Fold Jib, Aux Hoist, A/C & Heat. Located in Mobile, AL. Unit #9330. **\$355,000.00**



Grove RT540E S/N 226660 2007, 40 USt, Cummins QSB6.7L Diesel, 102' Main Boom, 26'-45' Tele Jib, A/C & Heat. Located in Mobile, AL. Unit #9690. **\$138,000.00**



Terex RT780 S/N 14452 2007, 80 USt, Cummins QSB6.7 Diesel, 126' Main Boom, 33'-57' Tele Jib, Aux Hoist, A/C & Heat. Located in Columbus, OH. Unit #9903. **\$195,000.00**



Tadano TR600XXL S/N 545659 2004, 60 USt, Mitsubishi 6M60-TLA3B Diesel, 144' Main Boom, 32'-58' Bi-Fold Jib, Aux hoist, A/C & Heat. Located in Raleigh, NC. Unit #8863. **\$139,000.00**



5

Link-Belt RTC8065 S/N J9J7-9754 2007, 65 USt, CAT C6.6 Diesel, 115' Main Boom, 35'-58' Bi-Fold Jib, Aux Hoist, A/C & Heat. Located in Hammond, IN. Unit #9869. **\$170,000.00**



6

Link-Belt RTC80100 II S/N J7J5-7671 2005, 100 USt, Detroit Series 40 Diesel, 150' Main Boom, 31'-55' Bi-Fold Jib, Aux Hoist, A/C & Heat. Located in Nitro, WV. Unit #8848. **\$285,000.00**



7

Grove RT650E S/N 224522 2005, 50 USt, Cummins B5.9L Diesel, 105' Main Boom, 29'-51' Tele Jib, Aux Hoist, A/C & Heat. Located in Raleigh, NC. Unit #8943. **\$119,000.00**



8

Terex RT230 S/N 161616 2014, 30 USt, Cummins QSB4.5L Diesel, 94' Main Boom, 26'-43' Tele Jib, A/C & Heat. Located in Fort Wayne, IN. Unit #10911. **\$222,000.00**

SHOP TRUCK CRANES *from 35-140 USt*

Grove TMS500E, S/N 225511 2006, 40 USt, Cummins ISC 330P Diesel, 95' Main Boom, 26'-45' Tele Jib, A/C & Heat, Newer Paint. Located in Baton Rouge, LA. Unit #9539. **\$129,000.00**



Link-Belt HTC8650, S/N L8J7-9151 2007, 50 USt, CAT Diesel, 110' Main Boom, 28'-51' Bi-Fold Jib, Aux Hoist, A/C & Heat. Located in Pittsburgh, PA. Unit #9608. **\$145,000.00**



Grove TMS800E, S/N 225526 2006, 80 USt, Cummins ISM450HP Diesel, 128' Main Boom, 33'-56' Bi-Fold Jib, Aux Hoist, A/C & Heat, Pin on 5th axle. Located in Milwaukee, WI. Unit #9346. **\$276,400.00**



Grove TMS700E, S/N 233022 2012, 50 USt – can be re-rated to 60 USt, Cummins QSM Diesel, 110' Main Boom, 33'-56' Bi-Fold Jib, Aux Hoist, A/C & Heat. Located in Indianapolis, IN. Unit #10579. **\$409,000.00**



Link-Belt HTC8675LB, S/N F2J6-8903 2006, 75 USt, Detroit DDEC-60 Diesel, 127' Main Boom, 38'-64' Bi-Fold Jib, Aux Hoist, A/C & Heat, Newer Paint. Located in Milwaukee, WI. Unit #DL1053MLW. **\$253,000.00**



Terex T340-1XL, S/N 120227 2013, 40 USt, Cummins ISC 300P Diesel, 105' Main Boom, 32'-49' Tele Jib, A/C & Heat. Located in Knoxville, TN. Unit #10641. **\$339,000.00**



Terex T550-1, S/N 14990 2008, 50 USt – can be re-rated to 60 USt, DDEC Series 60 Diesel, 110' Main Boom, 32'-57' Tele Jib, Aux Hoist, A/C & Heat. Located in Toledo, OH. Unit #10033. **\$235,000.00**



Link-Belt HTC8690, S/N N3J8-0025 2008, 90 USt, CAT C13 Diesel, 140' Main Boom, 35'-58' Bi-Fold Jib, Aux Hoist, A/C & Heat, Newer Paint. Located in Wilmington, NC. Unit #10001. **\$305,000.00**

JOB PROFILE

REELING IN THE BIG ONE

ALL ERECTION & CRANE RENTAL'S KEY ROLE IN KELLEYS ISLAND ELECTRICAL UPGRADE

All along the Great Lakes, fishing enthusiasts dream of reeling in the big one. ALL Erection & Crane Rental Corp. of Cleveland, a member of the ALL Family of Companies, may have brought in the biggest one of all—a 230,000-pound reel full of electrical cable—and one that helped bring reliable electricity to residents of a Lake Erie island.

Island living isn't just reserved for the Caribbean. On the Great Lakes, you'll find people living on islands, whether for the privacy, the soothing waterfront views, or simply

for enjoying a laid-back lifestyle. Kelleys Island, located in the western basin of Lake Erie, is home to 150 residents, a number that swells to 1,500 in the summer months. Power for the island is provided by two electric lines that run through tunnels under the lake.

When one of those lines reached 65 years of service life, the contract to replace it went to the Durocher Marine division of Kokosing Construction, a Michigan-based premier installer of subaqueous cable systems throughout the Great Lakes region.

Running electrical cable from the mainland substation in Marblehead, Ohio, to Kelleys Island four miles to the north required 22,500 feet of cable, which comes wound around a reel. This is no fishing reel, though. This one weighs 230,000 pounds and stands 11.5 feet high, 11 feet wide, and 47 feet long. It arrived by rail car to the Port of Cleveland, where it needed to be transferred to the work barge that would then travel to the job site.

The LTM 1450-8.1 brings power and versatility, as well as fast delivery and setup, to maximize uptime.





The transfer was scheduled to happen at the port using the onsite Buckeye Booster crane for the lift. However, unforeseen mechanical issues scuttled its use. Kokosing called on ALL Erection & Crane Rental to step in and save the day.

ALL quickly mobilized two high-capacity cranes, a 500-USL Liebherr LTM 1450-8.1 and a 550-USL Grove GMK7550, to perform a tandem lift of the gigantic reel. It's a testament to ALL's extensive fleet that they were able to spec two large machines so quickly and deliver them from a local yard.

The LTM 1450 had 70 feet of telescopic boom and 295,400 pounds of counterweight, while the GMK7550 had 124 feet of main boom, a MegaWingLift™ at 53 degrees, and 352,700 pounds of counterweight.

Getting the large reel off the rail car and onto the barge required two main steps. "Because of the radius we were working at, we had to use the LTM 1450 to pick the reel off rail car and position it on the ground," said Tim Paquette, project manager for Kokosing Construction Durocher Marine Division. "Then we moved the two cranes along each side and made the final pick, using the LTM 1450 for the shorter radius and the GMK7550 for the longer one." In all, the process took several hours spread across two days.

After its secure placement on the barge, the reel made the trip west to where the cable was installed. The new electric line is expected to provide up to 50 years of service, powering the homes, restaurants, and businesses of Kelleys Island. And that's no fish story. ([See Say it in Six on page 2](#)). ♦



The MegaWingLift™ attachment increases capacity of the GMK7550 for a boost of power.



SHOP TOWER CRANES

1. Potain HDT80: S/N 602141 2013, 6.6-USt, 148' jib with up to 30 deg. offset, (3) section galvanized telescoping mast allowing hook heights up to 106' (jib horizontal), elevator cab, SM/DM trolley & block for 2/4-part hoist reeving, hydraulic ballasting derrick, complete set of base concrete ballast, radio remote control with load-moment indicator (LMI), master controller with 114' cable, anemometer, transport kits, (1) set of manuals. *Located in Atlanta, GA. Unit #DL1179MLW. **POR***

2. Potain T85A: S/N 605074 2015, 6.6-USt, 148' jib with up to 30 deg. offset, 3 lattice mast inserts allowing hook heights up to 118' (jib horizontal), SM/DM trolley & block for 2/4-part hoist reeving, complete set of base concrete ballast, radio remote control with load-moment indicator (LMI), anemometer, transport kits, (1) set of manuals. *Located in Lakeville, MN. Unit #DL1188MLW. **POR***

3. Terex/Peiner SK315 25132 2005, 17.6-USt, 229' jib, (11) TS212 masts, (1) TSK212 mast, WB 66-80/4F (standard) hoist winch, 2 part trolley, maintenance davit, full set steel-encased concrete counterweights, 230'+ power cord, A/C, (1) set of manuals. *Located in Raleigh, NC. Unit #9009. **POR***

4. Terex/Peiner SK315 25143 2005, 17.6-USt, 229' jib, (11) TS212 masts, (1) TSK212 mast, WB 66-80/4F (standard) hoist winch, 2 part trolley, maintenance davit, full set steel-encased concrete counterweights, 230'+ power cord, A/C, (1) set of manuals. *Located in Fort Wayne, IN. Unit # 9009-1. **POR***

5. Terex/Peiner SK415 26090 2005, 22-USt, 246' jib, (11) TS212 masts, (1) TSK212 mast, WB 66-100/4F (standard) hoist winch, 2 part trolley, maintenance davit, full set steel-encased concrete counterweights, 230'+ power cord, A/C, (1) set of manuals. *Located in Nashville, TN. Unit #8937. **POR***

6. Terex/Peiner SK415 26112 2005, 22-USt, 246' jib, (11) TS212 masts, (1) TSK212 mast, WB 66-100/4F (standard) hoist winch, 2 part trolley, maintenance davit, full set steel-encased concrete counterweights, 230'+ power cord, A/C, (1) set of manuals. *Located in Gary, IN. Unit #9201. **POR***

7. Potain MD485B 98750 2005, 22-USt, 262' jib, (14) KRMT839A masts, standard 166 LBR50 hoist winch, 2 part (1C) trolley, full set steel-encased concrete counterweights, 200'+ power cord, A/C, (1) set of anchors, (1) set of manuals. *Located in Durham, NC. Unit #8841. **POR***

8. Terex/Peiner SK575 27022 2004, 35-USt, 262' jib, (11) TS213 masts, (1) TSK213 mast, WB 122-160/4F (standard) hoist winch, 2 part trolley, maintenance davit, full set steel-encased concrete counterweights, 230'+ power cord, A/C, (1) set of manuals. *Located in Knoxville, TN. Unit #8635. **POR***





SHOP BOOM TRUCKS *from 8-80 USt*

NEW National NTC55128, 55 USt, 128' Main Boom, 26'-45' Able to Offset Jib, 102" W Factory Aluminum Decking. Mtd on a Peterbilt 367, ISX12 500HP, 18 Speed UltraShift Transmission, 100 Gallon Fuel Tank, Front Air Disc Brakes, and MUCH MORE. *FOB Richfield, OH. Unit #R2092.*



NEW PM 65024SP, 72 USt, 50.19' Max Vert, 37.07' Max Horiz, 22' Heavy Hauler Steel Bed, Bulkhead, Toolbox and 45T HD Pintle Hitch, Mtd on a Peterbilt 567, MX13 455HP, Allison 4500 Transmission, and Air Disc Brakes. *FOB Richfield, OH. Unit #R2009.*

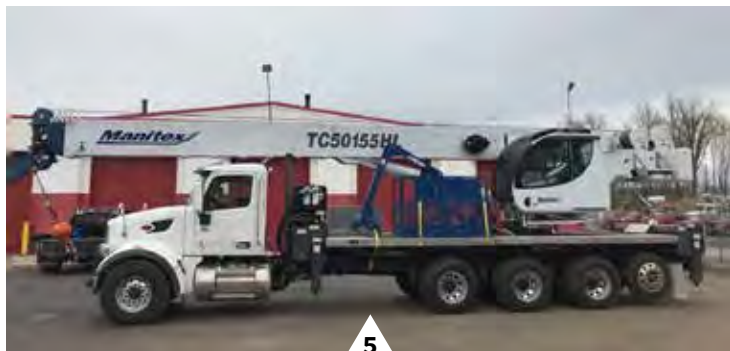


NEW Manitex 30112S, 30 USt, 112' Main Boom, 26'-46' Jib, A/C in Operators Cab, Front Bumper Stabilizer for 360° Load Chart. Mtd on a Peterbilt 567, MX13 510HP, UltraShift Transmission, 100 Gallon Fuel Tank, and Air Disc Brakes. *FOB Richfield, OH. Unit #R2127. NEW & USED Inventory Available*



2017 Manitex TC50128S, 50 USt, 128' Main Boom, 32'-49' Able to Offset Jib, A92.2 Ready, AUX Diesel Heater, and Front Bumper Stabilizer for 360° Load Chart. Mtd on a Peterbilt 365, ISX12 500HP, Ultra Shift Transmission, 110 Gallon Fuel Tank. *FOB Richfield, OH. Unit #U2024. NEW & USED Inventory Available*

Spring 2020



5

NEW Manitex TC50155SHL, 50 USt, 151' Main Boom, 39' Jib, 2 Year Warranty, Remotes, A92.2 Rated 2 Man LW Basket, 2 Braden Winches, AUX Diesel Heater, Toolbox, and 102" W Platform Mtd on a Peterbilt 567, ISX12 500HP, 8LL Transmission, and MORE. FOB Richfield, OH. Unit #R2058.



6

NEW Manitex PL74S, Drywall Delivery Truck, 74' Boom, 73' 8" Max Vert, 61' 2" Max Horiz, Remote Controls for operation, and MUCH MORE. Mtd on a Freightliner 114SD chassis, Detroit DD13 470HP, Eaton 8LL 10-Speed Transmission, and 80 Gallon Fuel Tank. FOB Richfield, OH. Unit #R2105.



7

NEW Manitex 35124C, 35 USt, 124' Main Boom, 31' Jib, 2 Year Warranty, Oil Cooler, and Extra Control Valve for accessory. Mtd on a Peterbilt 567, MX13 510HP, 18 Speed UltraShift Transmission, 100 Gallon Fuel Tank, Air Disc Brakes, and 13.5k Pusher Axle. FOB Richfield, OH. Unit #R2129. 2 Units Available.



8

2016 Terex Crossover 4500L, 45 USt, 129' Main Boom, 32'-49' Offset Able Jib, A/C and Heater in Operator Cab, Dual Axis Controls, and MUCH MORE. Mtd on a Freightliner 114SD, DD13 450HP, 8LL Manual Transmission, 80 Gallon Fuel Tank, and Federal Bridge Legal. FOB Richfield, OH. Unit #U2116.



9

NEW Manitex TC60131, 60 USt, 131' Main Boom, 31'-53' Offset Telescopic Jib (Lattice base w/box style pull out section), Wind LMI, 10,000 Lbs. of removable counterweight slabs, and 360° Load Chart without Front Bumper Stabilizer. Mtd on a Peterbilt 567. FOB Richfield, OH. Unit #R2138.



10

NEW National NBT45127-1, 45 USt, 127' Main Boom, 31'-55' Jib, A/C in Operator's Cab, and 102" W Aluminum Decking. Mtd on a Peterbilt 567, X15 500HP, 18 Speed UltraShift Transmission, Air Disc Brakes. FOB Richfield, OH. Unit #R2106. NEW & USED Inventory Available.

SERVICE SERVES US ALL

HOW WE DO IT, AND WHY

The foundation of the ALL Family of Companies has many building blocks. A significant one is the company's commitment to industry-leading service and maintenance of the equipment in its fleet. It's a credo that is well-known throughout the company's continental footprint—be good to the machines, and they will be good to you and your customers.

Greg Kossman is the service manager of mobile cranes for ALL Erection & Crane Rental of Cleveland. He's a 40-year veteran of the crane business and has held positions with ALL for 12 years, the last seven years

in his current job. He knows how important it is for each crane in ALL's fleet to be rent-ready.



**SAFETY IS ALL'S TOP
PRIORITY, AND MUCH
OF SAFETY BEGINS
WITH HAVING A WELL-
MAINTAINED FLEET.**



That can be an elusive term, one with different meanings to different

people. To Kossman, it's a very high standard. "To me, a rent-ready crane will pass an annual inspection, even if it's not time for it." Kossman says every crane rented by ALL is returned to this condition by the service team after each rental.

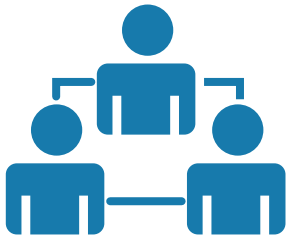
"When the crane comes back to us after rental, it gets a meticulous inspection," said Kossman. "Everything that needs fixed or adjusted is handled at that time. Until it's in tip-top shape, we won't return it to the field."

"We take pride in our level of service," said Kossman. "We think we do it better than anybody else. From strictly adhering to factory-recommended





maintenance schedules to quickly resolving any issues in the field, we know time is money for our customers. We also know the human cost that is riding on our work. Safety is ALL's top priority, and much of safety begins with having a well-maintained fleet."



Maintenance Teams

Cranes are divided into three categories: RTs (rough terrain), ATs (all terrain),

and crawlers. Each has a team dedicated to its maintenance.

ATs are large, expensive cranes that always rent with ALL's own operators traveling to the jobsite. They are rarely out for more than a single day. These factors provide a certain degree of additional control over the type of post-rental maintenance required.

RTs are the workhorses of the fleet, and it's not unusual to have several in the shop for multiple days as general maintenance and repairs are conducted

"There is some overlap on the RT and AT teams because of the similarities between the machines," said Kossman. "But the crawler team deals solely with

crawlers. Because of the bulldozer tracks they run on, it takes longer to get them ready to return to service."



Technology Unites Branches

ALL uses asset management software to track its entire fleet across all of its branches nationwide. From the service perspective, this tracks all maintenance performed on a piece of equipment

continued on page 16



continued from page 15

so the service departments at every branch are always on the same page. Maintenance schedules for each machine are programmed into the system, with alerts so technicians know when it is time to perform oil changes and other routine maintenance.

“

...THERE ARE TIMES WE
CAN GO WEEKS WITHOUT
A SINGLE SERVICE CALL.
THAT SPEAKS TO OUR
SERVICE RECORD.

”

“One of the things customers love about ALL is our large fleet,” said Kossman. “So, let’s say a customer in the Midwest needs a specific type of crane that we have at one of our southern branches. We can deliver it for them quickly. When that crane arrives at the new branch, the software allows for a seamless carryover of the maintenance schedule.”

Kossman says to further enhance the hand-off, service managers schedule a phone conference to go over equipment maintenance when a machine travels between branches.

Accuracy and Speed

If a crane breaks down on a job site, it’s vital to fix it fast and correctly. ALL’s service teams get to the site immediately when possible, and rarely let more than a day go by. The goal, of course, is to avoid the need for it at all. “I have 55 cranes on rent, and there are times we can go weeks without a single service call,” said Kossman. “That speaks to our service record.”



“For example, oil changes and other fluid changes have to be done at a specific time, according to hours of use. If a crane comes up due and it’s out on rent, a technician goes to the job site and does it in the field. Whenever it’s due, you go out and do it.”



Training and Longevity

Training takes many forms at ALL. Team members are sent to all service schools offered by the various manufacturers. When a new crane is introduced, a trainer from the manufacturer will travel to ALL for a tutorial on the ins and outs of the machine.

There is ongoing training in the form of weekly brush-ups and a mentor program in which a veteran mechanic is assigned to a younger one. They work together to pass along the trade to the next generation. In this respect, ALL has a valuable resource to draw from, as nearly half the mechanics in Kossman’s shop have more than 25 years on the job.

“Our guys sleep, eat, and breathe this stuff,” said Kossman. “They like the challenge of repairing and maintaining cranes. They understand that the same symptom can have many different



solutions, depending on the make and model. These are the things you can only learn from experience.”

Service as a Sales Tool

ALL's success with service also makes for an attractive selling point when machines are retired from the fleet and placed for sale. Buyers have access to a complete service and maintenance history, generated by the asset management system where all fixes are tracked. This is in addition to the OSHA-mandated annual inspection report.



Customers buying used equipment from ALL will have peace of mind that the factory-recommended maintenance schedule was meticulously followed, authorized parts were used for repairs, and all repairs were made in a timely fashion. “They will know they’re getting a safe, high-performing, well-maintained machine,” said Kossman. ♦



THE PARTS PART

Understandably, parts and service have a symbiotic relationship. The service team needs to diagnose and correct an issue, but they need parts to complete the job.

Larry Jeppe, procurement director for the ALL Family of Companies, says the need to maintain a rent-ready fleet drives his approach to parts inventory. “We have a million dollars in motors and pumps in stock because those are the things that, if they fail, can bring a crane to a standstill,” said Jeppe.

But it goes beyond stocking big-ticket items. The strategy requires a balance, including knowing what smaller parts to always have on hand. It is here where Jeppe preaches uniformity, having a part that will fit multiple crane types. “It requires an understanding of your fleet, knowing what will work and what won’t. I’d rather stock one tire type that fits multiple cranes. Same with things like headlights, windshield wipers, door handles, and rearview mirrors.”

He admits it’s not always possible, but he speaks to manufacturers from time to time, encouraging them to make more parts uniform. “It’s tough, but it’s important to our rental business at ALL,” said Jeppe. “I consider it support after the sale, which is what we’re all about.”

Jeppe also counts on recommended parts lists (RPLs) from manufacturers to guide his procurement. “It’s all about having parts on hand that are going to keep our customers up and running,” said Jeppe. “Our promise to them is that we are going to walk alongside them and help them meet their deadlines. A robust parts inventory is a big part of that.”

Service manager Kossman appreciates the work done by the parts department. “I’m a big fan,” he said. “After all, we’re one of their biggest customers.” ([See Improving Craneparts.com on page 28](#)). ♦



SHOP ALL-TERRAIN CRANES *from 45-900 USt*

Liebherr LTM1500 8.1 S/N 073348, 2011, 600 USt, Liebherr Diesels, Y-Guy, 276' Main Boom, 69'-299' Luffing Jib, 46'-207' Fixed Jib, A/C & Heat, Telma Brake, Working Lights, Liccon. In 2019 we invested over \$100,000.00 into this machine. Telescope Cylinder rebuilt and re-chromed, Luffing Cylinder rebuilt and re-chromed, replaced working lights, replaced steering hoses and cylinders, misc repairs. *Located in Cleveland, OH.* Unit #10485. **\$3,425,000.00**



Grove GMK5120B S/N 5100-9468, 2005, 120 USt, Mercedes Diesels, 167' Main Boom, 36'-59' Bi-Fold Jib, (2) 26' inserts for total jib length of 112', Aux Hoist, A/C & Heat, 2 Axle Boom Dolly. *Located in Milwaukee, WI.* Unit #DL1009. **\$339,000.00**



Demag AC40 S/N 70734, 2007, 45 USt, Mercedes Diesel, 102' Main Boom, 23'-42' Tele Jib, A/C & Heat. *Located in Mississauga, Ontario.* Unit #9956. **\$259,000.00**



4

Liebherr LTM1750 – 9.1 S/N 096038, 2013, 900 USt, Liebherr Diesels, Y-Guy, 171' Main Boom, 69'-299' Luffing Jib, 20'-203' Fixed Jib, Aux Hoist, A/C & Heat, Camera for reverse drive with color monitor, quick connection for upper superstructure. Located in Fort Wayne, IN. Unit #10662. **\$5,200,000.00**



5

Tadano ATF80-4 S/N 2043148, 2006, 100 USt, Mercedes Diesels, 159' Main Boom, 29'-52' Tele Jib, Aux Hoist, A/C & Heat, 2 Axle Boom Dolly. Located in Milwaukee, WI. Unit #DL1043. **\$470,000.00**



6

Grove GMK7550 S/N 7450-8032, 2006, 550 USt, Mercedes Diesels, Mega Wing Lift, 197' Boom, 82'-240' Luffing Jib, 39'-230' Fixed Jib, A/C & Heat, Both lift cylinders rebuilt in 2018, Fire Suppression System, 3 Axle Boom Dolly. Located in Milwaukee, WI. Unit # 9490. **\$1,550,000.00**



7

Link-Belt ATC3200 S/N P6K1-1447, 2011, 200 USt, Mercedes Diesels, 197' Main Boom, 17'-43' Bi-Fold Jib, (4) 19.7' inserts for total jib length of 122', Aux Winch, A/C & Heat, 2 Axle Boom Dolly. Located in Toledo, OH. Unit #J6575TOL. **\$779,000.00**



8

Grove GMK6250L S/N 6220-9095, 2006, 250 USt, Cummins Diesels, 236' Main Boom, 43'-72' Bi-Fold Jib, (2) 26' inserts for total jib length of 125', Aux Hoist, A/C & Heat, Boom Removal System, Quick Disconnect for Outrigger Beams, 2 Axle Boom Dolly. Located in Milwaukee, WI. Unit #DL1031MLW. **\$575,000.00**

SHOP CRAWLER CRANES *from 40-1,000 USt***1**

Link-Belt TCC750 S/N R8K0-1739, 2010, 75 USt, CAT Diesel, 115' Main Boom, Aux Hoist, Newer Paint. *Located in Lima, OH.* Unit #10339. **\$330,000.00**

**2**

Link-Belt LS218HSL S/N N6J8-0084, 2008, 110 USt, Isuzu Diesel, 150' Main Boom, 2 Drums, Free Fall. *Located in Atlanta, GA.* Unit #9975. **\$495,000.00**



Terex HC165 S/N AC4183, 2006, 165 USt, Cummins Diesel, 200' Main Boom, Free Fall. Located in Toledo, OH. Unit #9530. **\$457,000.00**



Manitowoc 4100W Series 2 S/N 41231, 1974, 230 USt, Cummins Diesel, 180' Main Boom, 2 Drums. Located in Knoxville, TN. Unit #8776. **\$450,000.00**



Manitowoc 888 Series 2 S/N 8881044, 1996, 230 USt, Cummins Diesel (3,350 Hours), 200' Main Boom, 2 Drums, Newer paint. Located in Kaukauna, WI. Unit #8958. **\$500,000.00**



Kobelco CK800G-2 S/N GG07-06055, 2018, 80 USt, Hino Diesel, 180' Main Boom, 60' Fixed Jib, 3 drums. Located in Columbus, OH. Unit #11267. **\$695,000.00**



Manitowoc 14000 S/N 14001007, 2007, 220 USt, Cummins Diesel, 203' Main Boom, 2 Drums, Newer Paint. Located in Pittsburgh, PA. Unit #9740. **\$750,000.00**



Complete Max-er 2000 S/N 2253126, 2001, 200' #79 Boom, 341,000 lbs. of Counterweight, Newer Paint. Located in Cleveland, OH. **\$559,000.00**

IN THE LIFE

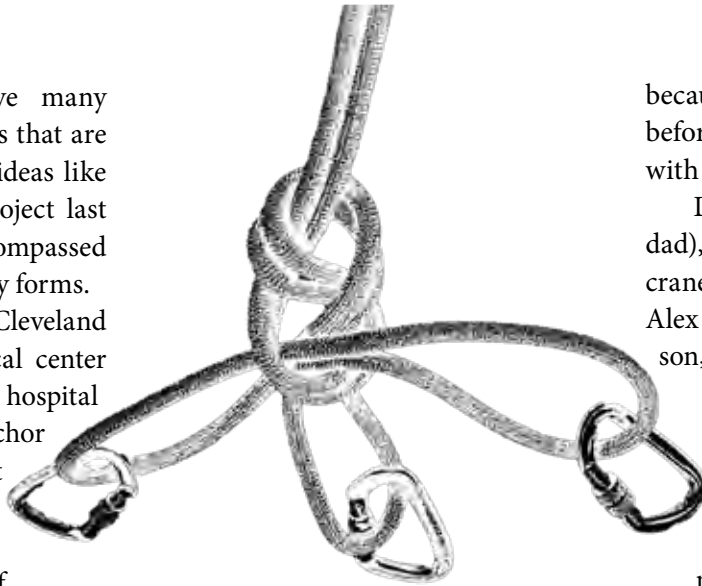
ALL IN THE FAMILY:

DEMONSTRATING THE MANY MEANINGS OF THE TIES THAT BIND

The word “family” can have many meanings, from those blood ties that are easily understood up to larger ideas like community. A construction project last fall on Cleveland’s west side encompassed the concept of family in its many forms.

It all started with the Cleveland campus of MetroHealth medical center and its new 11-floor, 270-room hospital tower. MetroHealth is the anchor of Cleveland’s West 25th Street neighborhood. It is a guardian of health, a landmark in the community, and a sign of the promise of quality care for all residents. More than simply a new health care facility, the MetroHealth system’s new construction project was meant to do nothing less than act as a catalyst to revitalize the entire area.

To that end, many familiar faces were involved in the project, including ALL Erection & Crane Rental, the Cleveland headquarters of the ALL Family of Companies (there’s that word “family” again). In essence, the cranes from ALL



helped to build a new hospital for a historic Cleveland neighborhood—their extended family.

The Feiler family

The family theme gets even deeper when you factor in the Feiler family, which operated all three Kobelco cranes for ALL on the hospital site. Dean Feiler Sr., his son, Dean Jr., and his nephew, Alex Feiler, worked side-by-side on the jobsite every day. It was poignant for Dean,

because this was to be his last project before retiring after a 35-year career with ALL.

Dean Sr.’s older brother (and Alex’s dad), Art Feiler, was a longtime ALL crane operator who retired a decade ago. Alex is now a six-year veteran, and Dean’s son, Dean Jr., has 10 years on the job.

“Getting to watch them work every day, I’m proud of the professionals they’ve become,” said Dean Feiler Sr. “Not everyone can do this job, but they’ve both put in the hard work and are now veterans in their own right.”

Cranes are family, too

ALL kept the cranes in the family, too, providing three 80-UST Kobelco CK800G-2s for the work. ALL became an authorized dealer of Kobelco cranes in 2017, heralding the brand as a global leader in smart engineering and the environmentally conscious manufacturing of next-generation cranes.

continued on page 24



Dean Feiler Sr. capped off a 35-year career with this job. He retired and handed the reins to his nephew, Alex, and son, Dean Jr.



continued from page 22

Mike LiPuma, sales representative from ALL Erection & Crane Rental, says Kobelco CK800G-2 cranes are a go-to for early site work in high-rise construction.

“It’s the machine of choice for that type of work because they work faster than a regular hydraulic or all-terrain crane,” said LiPuma. “They’re more efficient and can get around the site easier. For sites with firm, compacted ground, these Kolbelcos have a lot of upside.”

This 80-USt-capacity model hits a sweet spot in steel erection and general construction, providing efficiencies from delivery to assembly to operation. The main boom ranges from 50 to 200 feet, with 30 to 60 feet of jib.

It is a next-level machine with completely upgraded componentry. Its advanced telematics come standard, with detailed daily usage reports that

make planned maintenance a breeze. It has an all-new engine that complies with EPA Tier IV final standards. The auto start/stop feature can save up to 30% on fuel consumption, plus it offers different counterweight configurations, and the counterweights can be shipped completely flat.



A family reunion

Feiler said that he, his son, and his nephew got frequent ribbing from other workers about how every workday on the MetroHealth site was a “family reunion.” Given the many aspects of family evident on the construction site, the description was apt and laden with meaning.

There are Feiler grandchildren, and although they haven’t shown an interest in the family business yet, Feiler Sr. won’t be ruling out a third generation picking up the mantle. “If it happens, I hope I’m around to see it,” he said. ♦



Cleveland's MetroHealth hospital construction united a community, a company, and a family.

SHOP **BOOM & SCISSOR LIFTS** from 10 -185 ft
MATERIAL HANDLERS from 5,000-20,000 lbs



Skytrak 8042, S/N 0160052648, 2013, 8,000 Capacity Cummins DSL, Enclosed Cab, Foam Filled Tires, 4x4. Located in Elk Mound, WI. Unit# 10727. **\$56,000.00**



JLG 400S, S/N 0300146256, 2011, 40' Platform Height, Deutz DSL, Foam Filled Tires, Generator, 4x4. Located in Milwaukee, WI. Unit #Z9238. **\$21,000.00**



JLG 600S, S/N 0300178821, 2013, 60' Platform Height, Deutz DSL, Foam Filled Tires, 4x4. Located in Kaukauna, WI. Unit# Z9633. **\$35,000.00**



Genie Z-135/70, S/N Z13508-638, 2008, 135' Platform Height, Deutz Diesel, Foam Filled Tires, Articulating Boom, 4x4. Located in Pittsburgh, PA. Unit #K2072. **\$45,000.00**

Spring 2020



5

JLG G12-55A, S/N 0160041599, 2011, 12,000lb Capacity, 55' Lift Height, 42' Forward Reach, Cummins DSL, Enclosed Cab, Foam Filled Tires, 4x4. Located in Pittsburgh, PA. Unit #10471. **\$66,000.00**



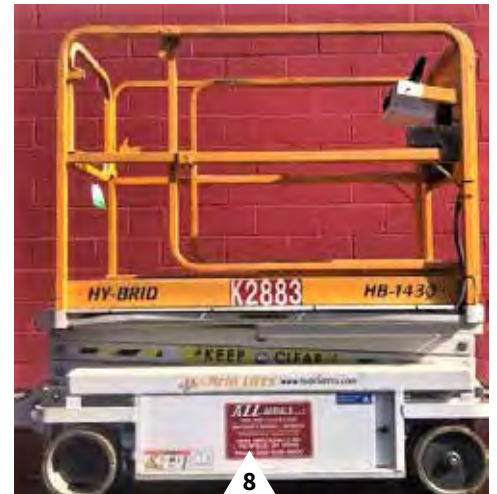
6

Genie S-85, S/N S8510-8496, 2010, 500lb Capacity, 85' Platform Height Deutz DSL, Foam Filled Tires. 4x4. Located in Pittsburgh, PA. Unit #Z9281. **\$36,000.00**



7

JLG G10-55A, S/N 0160053351, 2013, 10,000lb Lift Capacity, 55' Lift Height, Cummins DSL, Enclosed Cab, Foam Filled Tires, 4x4. Located in Hammond, IN. Unit# 10763. **\$73,000.00**



8

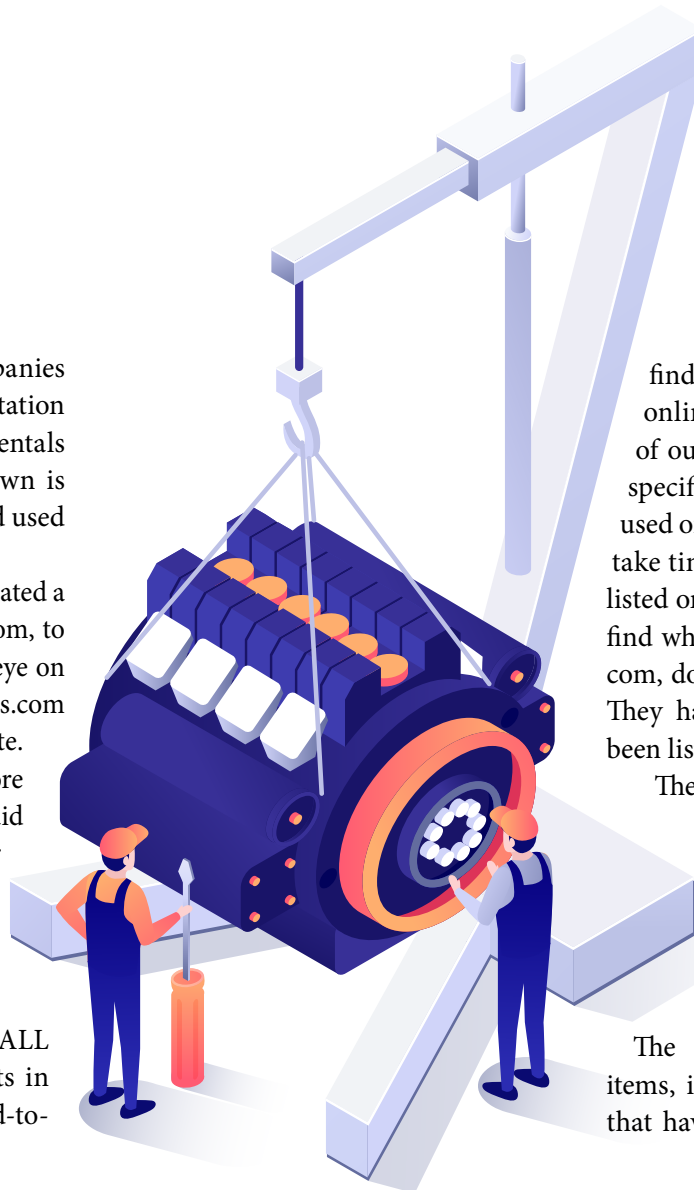
Hy-Brid HB-1430, S/N D02-11269, 2015, 14' Platform Ht., Electric, Non-marking Tires, 2x4. Located in Richfield, OH. Unit# K2883. **\$5,000.00**

IMPROVING CRANEPARTS.COM

ALL'S ONLINE PARTS STORE ADDS
FUNCTIONALITY, IMPROVES SEARCHABILITY

The ALL Family of Companies has a well-earned reputation as the go-to for crane rentals and sales. Less well known is that the company also sells new and used crane parts and engines.

In fact, since 2010, ALL has operated a separate website, www.craneparts.com, to facilitate parts sales. Now, with an eye on even better functionality, craneparts.com is in the midst of a long-awaited update. "Visitors to the site will have a more streamlined user experience," said Shane Davis, marketing manager for the ALL Family of Companies, who has spearheaded the update. "We're updating our inventory regularly and making it easier to find the parts you're looking for." ALL has a lot of crane and engine parts in stock including specialty and hard-to-



find parts. Not all of these are listed online, however. "We have parts at all of our yards that might be there for a specific crane or job. Some of them are used or surplus and ready to be sold. It'll take time to get those accounted for and listed online," Davis says that if you can't find what you need listed on craneparts.com, don't hesitate to reach out to them. They have plenty of items that haven't been listed on the website yet.

The current parts inventory exceeds 100,000 unique items. The range is truly impressive, from complete engines to boom sections, jibs, cabs, drums, sheaves, and more.

The inventory includes many rare items, including parts for crane models that have ceased production. "We carry



both aftermarket and OEM parts. If you need something for your crane or aerial/MEWP, chances are we can get it for you," said Davis.

"This vast inventory is a byproduct of ALL's commitment to maintaining a rent-ready fleet," said Davis. "We see our extensive parts stock as kind of an insurance policy—let's call it foresight—to facilitate maintenance before existing parts wear. But if our crane is on a job and needs a part, we have the resources we need to get it back up and running without having to wait for anything to be ordered. We even keep spare engines on hand for this reason. But when a crane exits the fleet and is sold, we're left with a spare engine that needs to be sold as well."

Craneparts.com brings together the inventories of the parts departments from ALL's three-dozen locations throughout

"WE'RE UPDATING OUR INVENTORY REGULARLY AND MAKING IT EASIER TO FIND THE PARTS YOU'RE LOOKING FOR."

the U.S. and Canada. That broad footprint increases the pool of parts to draw from.

At ALL, parts and service go hand-in-hand. In that context, it makes sense that an organization with such revered service would also have superior parts accessibility. "If an issue crops up on site, we have the service people to diagnose

and correct the problem, and we also have the guys in the parts shop that maintain our parts stock so we can have same-day installation and reduced downtime," said Davis.

Any company that owns a crane knows how hard it can be to find certain parts, and ALL's experience and access has helped many crane owners out of a bind. Thanks to craneparts.com—a resource for those hard-to-find parts—ALL's customers are able to sustain uptime and more easily maintain their own cranes.

The revamped craneparts.com is now up and running, even as additional improvements are being made. The company will continually update the site to reflect currently available inventory. ♦

SHOP **CRANE PARTS** FIND MORE PARTS AT CRANEPARTS.COM



Manitowoc 777 Luffing Jib, Complete Luffing Jib to fit Manitowoc 777 crawler crane. No 139 Jib - 170'. Luffing Jib, Very Good condition. Located in Orlando, FL. **POR**



Grove TMS700E Jib Inserts, 20' Jib Inserts will fit Grove TMS700E hydraulic truck cranes. Jib Insert, almost new. **POR**



Grove 22' Jib pullout section, Two - 22' pullout sections with anti-2-block trigger. Fits: RT600/RT600C, RT633C, RT635/RT635C, RT640C, RT644C, TMS640. Good condition. **POR**



JLG Fork Mounted Work Platform, Only fork mounted work platform approved for JLG, Lull, SkyTrak, & Gradall forklifts. 4' x 8' Platform with side entry. Three lanyard attachment points, ANSI Approved. **POR**



Manitowoc Pumps, Hoist Drum & Boom Hoist, more available. **POR**



Manitowoc Tumbler / Drive Sprocket, Fits Manitowoc Model 4000, Remanufactured, two available. **POR**

SHOP **ENGINES**



Liebherr D 9406 TI-E A4, S/N 99 11 0637, 429 HP @ 1900, MAA 12/11, 2,590lbs. **\$45,882 USD** \$15,000 CORE



CAT 3116, A/R 114-2910, A/R 5EN00358, 190 HP @ 2600, 1680lbs. **\$16,200 USD** \$4,500 CORE



Cummins 6C-8.3, S/N 46856236, 250 HP @2200, tier 1 NEW/used stage II, 1950lbs. **POR**

SHOP INDUSTRIAL CRANES *from 8-25 USt*



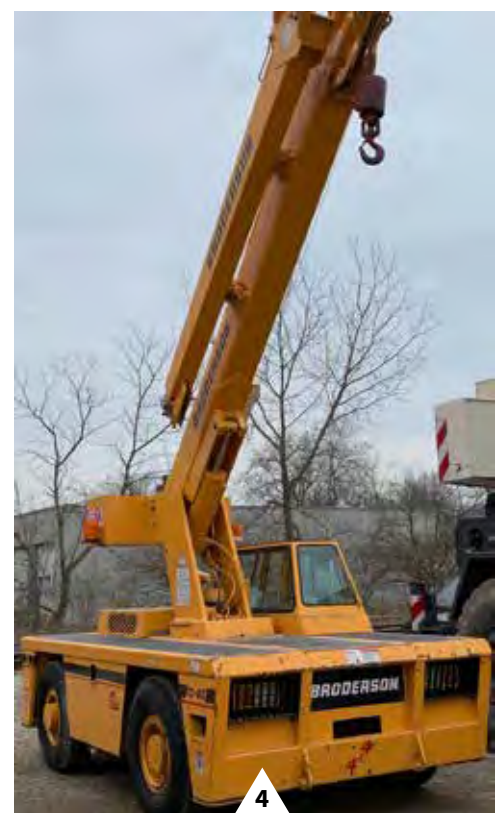
Grove YB7720XL S/N 320349, 2004, 20 USt, Cummins Diesel, 67' Main Boom, 17' Jib, Enclosed Cab with heat & defrost, Headlight and taillight grilles, Newer Paint Working Lights. Located in Pittsburgh, PA. Unit #8877. **\$55,000.00**



Shuttlelift 7755 S/N 321441, 2010, 22 USt, Cummins Diesel, 67' Main Boom, 17' Jib, Optional 17.5R25 Tires, Block Heater, Enclosed Cab with heat & defrost, Headlight and taillight grilles. Located in Hammond, IN. Unit #10367. **\$145,000.00**



Broderson IC-200-3G S/N 206942200, 2011, 15 USt, Cummins Diesel, 50' Main Boom, 15' Jib, Newer Paint, Enclosed Cab with heat & defrost, Headlight and taillight grilles. Located in Columbus, OH. Unit #10444. **\$87,500.00**



Broderson IC-80-3J S/N 63894180, 2012, 9 USt, Cummins Diesel, 30' Main Boom 10' Jib, Enclosed Cab with heat & defrost, Headlight and taillight grilles. Located in Nitro, WV. Unit #10512. **\$70,000.00**

SHOP TRUCKS AND TRAILERS



1

Peterbilt 389 (2008) Cummins ISX 550 HP, Fuller 18 Speed, 70" Ultracab W/ Prestige Interior, Front Axle 14,600 lbs, Rear 46,000 lbs, Dual 120 Gallon Fuel Tanks, Engine overhauled with warranty, 655k miles. Located in Cleveland, OH. Unit #X490. **\$72,000.00** Multiple Peterbilt 379s also available – visit ALTsales.com.



2

Chevy C5500 (2005) – Duramax Diesel, Crane, Compressor, Welder, 194k miles. Located in Cleveland, OH. Unit #CL1508. **POR** Ford service trucks also available – visit ALTsales.com.



3

XL 70SA Specialized (2013) 35 USt, 42'7" Main Deck, 8'6" Wide, Traveling Axle, 20,000 lb Winch w/100' 9/16" Steel Cable, Hendrickson Turner Air Suspension with 54" Axle Spacing, Wireless Remote, Apitong Wood Deck, 6.75x17.5 Alum Wheels. Located in Cleveland, OH. Unit #X1309. **\$48,000.00**



4

Load King 604 LR (1975) 60 USt, 53' Long, 10' Wide, 4-Axle, Fully restored in 2003. Located in Cleveland, OH. Unit #54. **\$45,000.00**



Shop NEW trailers through
ALT Sales, an authorized dealer
for Landoll and Manac.



5

Talbert Dropside Lowboy (2007) 45 USt, 26' Well, 8'6" Wide, 52'11" Overall, 3-Axle, Air Ride Equipped. Located in Cleveland, OH. Unit #X437. **\$35,000.00**



Talbert Lowboy (2000) 35 USt, 8'6" Wide, 44' Overall, 23' Well. Located in Apopka, FL. Unit #CL209. **\$38,000.00**



Talbert Lowboy (2003) 45 USt, 8'6" Wide, 57' Overall, 25'6" Well, 3-Axle. Located in Apopka, FL. Unit #CL661. **\$47,000.00**



Talbert Lowboy (1996) 45 USt, 8'6" Wide, 51' Overall, 25'6" Well, 3-Axle. Located in Apopka, FL. Unit #CL1112. **\$39,000.00**



Talbert Tri Axle (2000) 45 USt, 27' Open Well, 54'8" Overall Length, 45" Wide Beam. Located in Cleveland, OH. Unit #X852. **\$38,000.00**



Manac Double Drop (2010) 35 USt, 8'6" Wide, 48' Overall, 27'4" Well, 9'9" Rear Deck, 10'5" Top Deck, Air Ride, Closed Tandem. Located in Cleveland, OH. Unit #866. **\$19,000.00**

CENTRAL CONTRACTORS SERVICE GETS MORE “CENTRAL”

NEW HQ ELIMINATES NEED FOR THREE SEPARATE FACILITIES

Midwest crane-powerhouse Central Contractors Service is unifying its operations into a single, larger yard. The expansion provides a spacious 12 acres for a more modern logistics hub and operations department, a storage yard, and state-of-the-art offices and maintenance facilities. The consolidation will allow the branch to provide even more efficiency to its customers.



ALL
Family of Companies

ALL CENTRAL

DAWES

JEFFERS

ALT

www.allcrane.com