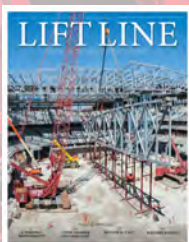
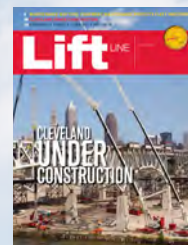
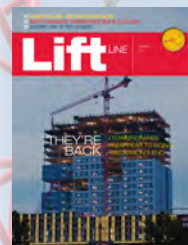


FALL 2020

LIFT LINE

YOUR SOURCE FOR USED AND NEW LIFT EQUIPMENT



ALSO IN THIS ISSUE

10
TOP JOBS

20
NEW THAT
MADE THE NEWS

32
IT'S ALL
ABOUT PEOPLE

40
PICTURE
PERFECT



ALL LIFT LINE

Fall 2020

Regional Sales Managers

US Northeast:

Shaune Rados
(216) 986-5190
Shaune.Rados@allcrane.com

US North & Northwest:

Joe Ruddell
(414) 831-6114
joe.ruddell@allcrane.com

US South & Outside of North America:

Steve Salvatore
(216) 986-5210
Steve.Salvatore@allcrane.com

Canada:

905.312.1763.
info@allcrane.com

About Lift Line

Lift Line is your guide to used equipment from an industry leader and North America's largest privately held crane and lift equipment rental and sales enterprise — the ALL Family of Companies.



Scan this QR code with your smart-phone to jump to our equipment database online.

**SIGN UP
FOR EMAIL
UPDATES**



Sign up to receive emails featuring first looks at new and used equipment, articles, case studies, and big announcements. Visit allcrane.com/LiftLine to sign up today.

While ALL Erection & Crane Rental Corp. and its affiliates endeavor to provide reliable information, the information contained herein is provided on an "AS-IS" and "AS AVAILABLE" basis and may include errors, omissions, or other inaccuracies. ALL makes no representation, warranties, or guarantees, expressed or implied, regarding the content in this publication.

© ALL Erection & Crane Rental Corp., an Equal Opportunity Employer

Contents

Departments

- 1 Welcome to this special 10th anniversary issue
- 2 Say it in Six

Features

- 10 Top Jobs
- 20 New That Made the News
- 32 It's ALL About People
- 40 Picture Perfect

Equipment Listings

- 4 Rough-Terrain Cranes
- 6 Truck Cranes
- 8 Tower Cranes
- 16 Industrial Cranes
- 18 Boom Trucks
- 26 All-Terrain Cranes
- 28 Crawler Cranes
- 30 New Equipment
- 38 Boom & Scissor Lifts and Material Handlers
- 46 Trucks & Trailers
- 48 Crane Parts



Page 10



Page 20



Page 32



Page 40

Cover: A collection of covers from 10 years of *Lift Line* to celebrate this, our 10th anniversary issue.

Welcome to this special 10th anniversary issue of *Lift Line*



We began the publication to give people a closer look and deeper insight into the wide range of work we do across the ALL Family of Companies. As we prepared this issue, taking time to look back has given us a real appreciation for the ground we've covered in a decade. We're excited to share it with you.

When we released the first issue of *Lift Line* in the spring of 2010, no one would've predicted that, 10 years later, the entire world would be in the throes of a global pandemic. For the time being, it's changed the way we all live ... and the way we do business. In the ALL Family, we're fortunate that our amazing customers and partners have forged ahead with new projects that have kept our equipment and expertise in demand.

Like many of you, we have embraced technology to keep our team bonded during these work-from-home times. We invested in robust tech platforms years ago so our nationwide branches were better able to act as one. I'm proud of the way our team has come together during this time. We have more than 30 branches across North America still acting in lockstep as a network of support for our customers.

In this issue, we talk about this thoroughness of spirit and togetherness. We also look back at many memorable projects and equipment introductions that helped shape the past 10 years. We also celebrate far too few of the people who we introduced you to in past issues of *Lift Line*. They are our greatest strength, and I wish there were room to recognize them all. This issue is a celebration of where we've been—and of what is yet to come.

Join us in taking a look back, and rest assured we're ready for tomorrow.

Michael L. Liptak
CEO and President

Say it in Six

SYNCHRONIZED LIFTING IS
OUR OLYMPIC SPORT.





Vehicle overpass above railroad tracks, Columbus, Indiana.
Central Rent-A-Crane, 900-USt Liebherr LTM 1750-9.1 and a
600-USt Liebherr LTM 1500-8.1.

SHOP ROUGH-TERRAIN CRANES *From 15 - 100 USt*



Grove RT875E, S/N 227703 2005, 75 USt, Cummins QSB6.7 (13,300 Hours), 128' Main Boom, 33'-56' Bifold Jib, Aux. Hoist, A/C, LMI, Block and Ball. Located in Cleveland, OH. Unit #9818. **\$209,000**



Broderick RT-300, S/N 49269300 2014, 15 USt, Cummins QSB4.5 T4i (4,585 Hours), Engine Side Covers, 17.5 x 25 Tires, 20 ply, 4 Wheel Steer, 4WD, Pintle Hook in Front and Rear, Wind Wiper- Top, A/C, Lighting Kit, 60' Main Boom, 20' Jib, RCL - Greer, Drum Hoist Rotation Indicators. Located in Fort Wayne, IN. Unit #10936. **\$175,000**



Link-Belt RTC-80100 II, S/N J7J8-0736 2008, 100 USt, Rebuilt Detroit DDEC-40 8.7 (3,100 Hours), 150' Main Boom, 31'-55' Offset Jib, Hyd. Outrigger Pin Removal, Counterweight Removal, Aux. Hoist, A/C, RCL Graph, Block and Ball. Located in Knoxville, TN. Unit #10159. **\$375,000**



Link-Belt RTC8065, S/N J9K2-3186 2012, 65 USt, Cummins QSB6.7 (7,200 Hours), 115' Main Boom, 35'-58' Offset Jib, Aux. hoist, 26.5 x 25-26PR Tires, Winch Rollers, RCL Bar Graph, A/C, Joysticks Controls, Aux. Lifting Sheave, Block and Ball. Located in Knoxville, TN. Unit #10574. **\$309,000**



Terex RT230-2, S/N 161644 2014, 30 USt, Cummins QSB4.5L (3,400 Hours), 94' Main Boom, 43' Jib, One Hoist, 20.5 X 25 - 24 Ply Tires, Single Lever Dual Axis, A/C and LP Heater, Block and Ball. Located in Madison, WI. Unit #10928. **\$222,000**



Grove RT530E2, S/N 228096 2008, 30 USt, Cummins QSB5.9 Diesel (7,306 Hours), 95' Main Boom, 26'-45' Tele-Jib, Value Package, A/C, Battery Disconnect Switch, Block and Ball. Located in Toledo, OH. Unit #10029. **\$119,000**



Link-Belt RTC8050 II, S/N J6J8-0004 2008, 50 USt, Cummins B5.9 (8,425 Hours), 110' Main Boom, 29'-51' Offset 2 Stage Jib, Aux. Hoist, Joystick Controls, A/C, RCL Bar Graph, Rear Steer Ind. Located Cleveland, OH. Unit #9892. **\$153,000**



Grove RT880E, S/N 229138 2008, 80 USt, Cummins QSB 5.9L Diesel (13,785 Hours), 128' Main Boom, 33'-56' Bifold Jib, 29.5 x 25-34 Tires, Aux. Hoist, Block and Ball, Value Package, Full Lighting Package, Cab Tilt, A/C. Located in Cleveland, OH. Unit #10067. **\$240,000**



Grove RT860, S/N 220566 1999, 60 USt, Cummins Diesel 5,000 Hours, 115' Main Boom, Aux. Hoist, 29.5X25 - 28 Tires, Hydraulic Cab Heater, Engine Block Heater, LMI. Located in Cleveland, OH. Unit #7108. **\$75,000**

SHOP **TRUCK CRANES** from 40-140 USt

Grove TMS9000e, S/N 232315 2012, 110 USt, Cummins QSM11, Eaton Fuller Transmission, 9,025 Hours, 58,000 Miles, 142' Main Boom, 33'-56' Hydraulic Bifold Jib, Aux. Hoist, A/C. Located in Pittsburgh, PA. Unit #10514. **\$497,000**



Grove TMS540E, S/N 227165 2007, 40 USt, Cummins ISC 330HP Turbo Diesel, 9,300 Hours, 112,000 Miles, 95' Main Boom, 26'-45' Telescopic Jib, A/C in Upper and Lower Cabs, Heavy Counterweight Package, LMI, Amber Flashing Lights, Block and Ball. Located in Wilmington, NC. Unit #9748. **\$139,000**



Terex T550-1, S/N 120407 2014, 50 USt, Cummins ISX Diesel, Allison Auto Transmission, 5,300 Hours, 33,000 Miles, 110' Main Boom, 33'-57' Jib, Aux. Hoist, Remote Outriggers, A/C, Work Light Package, Aluminum Wheels. Located in Pittsburgh, PA. Unit #10988. **\$435,000**



Link-Belt HTC8675 II, S/N P9K3-3595 2013, 75 USt, Cummins ISX11.9, 9,000 Hours, 70,000 Miles, 127' Main Boom, 38'-64' Bifold Jib, Aux. Hoist, A/C in Upper and Lower Cabs, Daytime Running Lights, Amber Strobe Light, Boom Flood Lights, RCL Bar, Trailer Air and Electric, Boom Float Kit, Block and ball. Located in Orlando, FL. Unit #10817. **\$475,000.00**



Link-Belt HTC8690, S/N N3K4-4040 2014, 90 USt, Cummins ISX12, 5,900 Hours, 55,000 Miles, 140' Main Boom, 35'-58' Offset Jib, Aux. Hoist, Daytime Running Lights, Amber Strobe, Trailer Air & Electric, 39,500 lbs Counterweight, RCL Light Bar, A/C, Boom Flood Lights, Boom Float Kit, Block and Ball, 2 Axle Boom Dolly. Located in Indianapolis, IN. Unit #10904. **\$553,000**



Link-Belt HTC3140LB, S/N J8K2-2762 2012, 140 USt, Cummins Diesels, 7,000 Upper Hours, 42,000 Miles, 195' Main Boom, 10'-31'-55' three piece bi-fold, on-board lattice Miles, 105' Main Boom, 32'-49' Tele Jib, Single Levers Dual Axis, A/C and LP Heater, Block and Ball. Located in Knoxville, TN. Unit #DL1155MLW. **\$750,000**



Terex T340-1XL, S/N 120227 2013, 40 USt, Cummins Diesel, Allison Transmission, 6,850 Hours, 35,000 Miles, 105' Main Boom, 32'-49' Tele Jib, Single Levers Dual Axis, A/C and LP Heater, Block and Ball. Located in Knoxville, TN. Unit #10641. **\$309,000**

SHOP **TOWER CRANES**





1. Potain HDT80: S/N 602141 2013, 6.6 USt, 148' jib with up to 30 deg. offset, (3) section galvanized telescoping mast allowing hook heights up to 106' (jib horizontal), elevator cab, SM/DM trolley & block for 2/4-part hoist reeving, hydraulic ballasting derrick, complete set of base concrete ballast, radio remote control with load-moment indicator (LMI), master controller with 114' cable, anemometer, transport kits, (1) set of manuals. *Located in Atlanta, GA.* Unit #DL1179MLW. **\$279,700**

2. Potain T85A: S/N 605074 2015, 6.6 USt, 148' jib with up to 30 deg. offset, 3 lattice mast inserts allowing hook heights up to 118' (jib horizontal), SM/DM trolley & block for 2/4-part hoist reeving, complete set of base concrete ballast, radio remote control with load-moment indicator (LMI), anemometer, transport kits, (1) set of manuals. *Located in Madison, WI.* Unit #DL1188MLW. **\$305,900**

3. Terex/Peiner SK315 S/N 25132 2005, 17.6 USt, 229' jib, (11) TS212 masts, (1) TSK212 mast, WB 66-80/4F (standard) hoist winch, 2 part trolley, maintenance davit, full set steel-encased concrete counterweights, 230'+ power cord, A/C, (1) set of manuals. *Located in Raleigh, NC.* Unit #9009. **\$296,900**

4. Terex/Peiner SK315 S/N 25143 2012, 17.6 USt, 229' jib, (11) TS212 masts, (1) TSK212 mast, WB 66-80/4F (standard) hoist winch, 2 part trolley, maintenance davit, full set steel-encased concrete counterweights, 230'+ power cord, A/C, (1) set of manuals. *Located in Fort Wayne, IN.* Unit #9171. **\$298,500**

5. Terex/Peiner SK315 S/N 25159 2005, 17.6 USt, 229' jib, (11) TS212 masts, (1) TSK212 mast, WB 66-80/4F (standard) hoist winch, 2 part trolley, maintenance davit, full set steel-encased concrete counterweights, 230'+ power cord, A/C, (1) set of manuals. *Located in Durham, NC.* Unit #9241. **\$295,700**

6. Terex/Peiner SK415 S/N 26121 2005, 22 USt, 246' jib, (11) TS212 masts, (1) TSK212 mast, WB 66-100/4F (standard) hoist winch, 2 part trolley, maintenance davit, full set steel-encased concrete counterweights, 230'+ power cord, A/C, (1) set of manuals. *Located in Knoxville, TN.* Unit #9286. **\$369,300**

7. Terex/Peiner SK415 S/N 26114 2005, 22 USt, 246' jib, (11) TS212 masts, (1) TSK212 mast, WB 66-100/4F (standard) hoist winch, 2 part trolley, maintenance davit, full set steel-encased concrete counterweights, 230'+ power cord, A/C, (1) set of manuals. *Located in Atlanta, GA.* Unit #9203. **\$374,900**

8. Potain MD485B S/N 98750 2005, 22 USt, 262' jib, (12) KRMT839A masts, standard 166 LBR50 hoist winch, 2 part (1C) trolley, full set steel-encased concrete counterweights, 200'+ power cord, A/C, (1) set of anchors, (1) set of manuals. *Located in Durham, NC.* Unit #8841. **\$378,700**

9. Terex/Peiner SK575 S/N 27028 2005, 35 USt, 262' jib, (11) TS213 masts, (1) TSK213 mast, WB 122-160/4F (standard) hoist winch, 2 part trolley, maintenance davit, full set steel-encased concrete counterweights, 230'+ power cord, A/C, (1) set of manuals. *Located in Madison, WI.* Unit #9232. **\$479,900**

JOB PROFILE

TOP JOBS

10 OF OUR FAVORITE PROJECTS FROM THE PAST 10 YEARS

As Yogi Berra once said, “Baseball is 90 percent mental and the other half is physical.” We say that every well-executed lift is 90 percent preparation and the other half is execution.

Be prepared. It’s a motto to build a reputation on.

With nearly three dozen branches across the U.S. and Canada, the ALL Family offers customers tremendous reach. Our equipment and our people have worked almost everywhere, from the Panama Canal to the Alaska wilderness. From the peaks of America’s tallest towers to the pit where we solemnly did our part after 9/11.



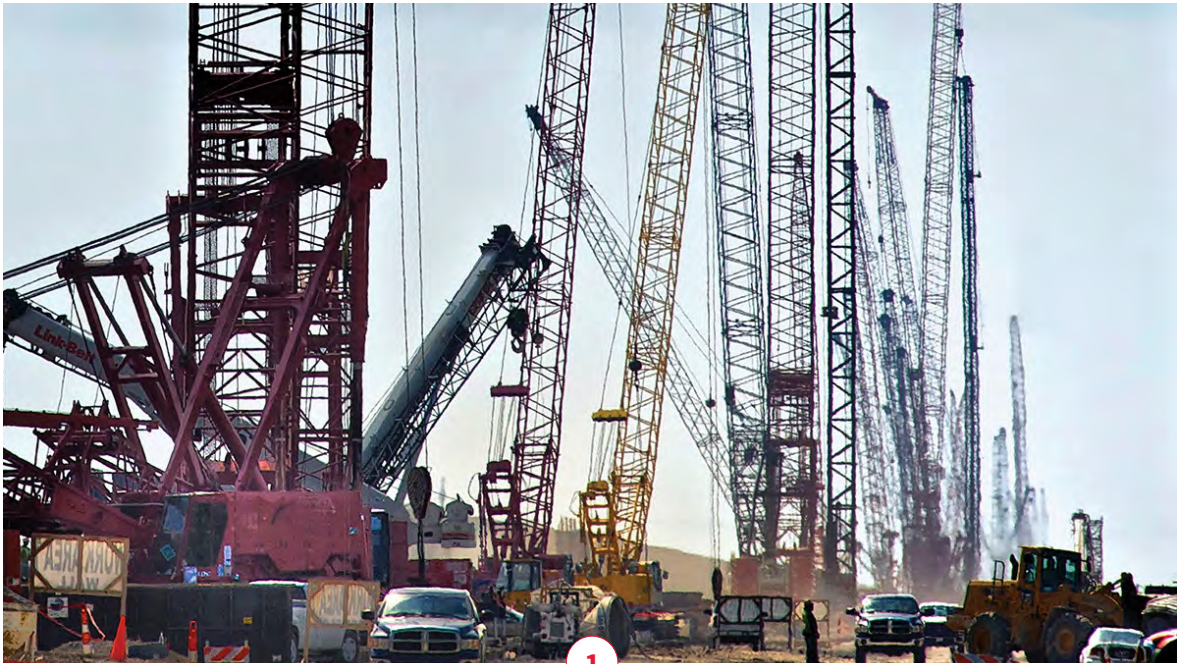
All this reach does something to a company as integrated as ours; namely, it inspires our unparalleled experience. We think we have seen it all. And then we see something new. Thousands of lifts every single day prepares us in untold ways.

In the past 10 years, we’ve worked on truly monumental jobs, impacted hundreds of communities, been part of amazing stories, and found new ways to advance our customers’ projects and the crane industry itself. Here are some of our most memorable moments, drawn from the first decade of *Lift Line* magazine.

“ THOUSANDS OF LIFTS EVERY SINGLE DAY PREPARES US IN UNTOLD WAYS. ”

The photo composition above is built using a photo of our Manitowoc 21000 assembling the mobile launch tower for the Ares I spacecraft at NASA Kennedy Space Center. Out of this world? Yeah, pretty darn close.





47 Cranes from ALL Help Rebuild After Katrina

Winter 2011

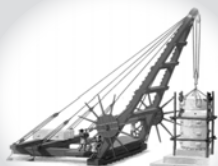
Hurricane Katrina devastated the Gulf Coast and left a great American city under water. Six years later, in 2011, more stringent design criteria for flood protection were put in place. When the time came to rebuild New Orleans, 47 crawlers and RTs from the ALL Family were deployed to help construct the eight-mile Chalmette Loop Levee floodwall and rebuild four pump stations. ALL pulled dozens of cranes from its nationwide fleet. ALL was also the only crane company on the levee job that had a service crew onsite.



Birth of the Shared Equipment Program (SEP)

Summer 2014

A \$200 million Akron Children's Hospital expansion project brought a novel construction concept to Ohio. In a unique arrangement, ALL and the general contractor, Welty/Boldt, LLC, entered into an innovative sole-supplier agreement. The GC acted as the primary renter of all the lift equipment from ALL and then rented it to the subcontractors—a method that helped to eliminate waste, cut costs, and improve productivity. The concept continues to grow, recently gaining coverage in the international publication *Cranes Today*, May 2020.



The first known construction cranes were invented by the ancient Greeks. The Parthenon, built from 447 B.C. to 438 B.C., used high-quality marble from nearby Mt. Pentelicon. The masons may have used a crane such as the one shown here to hoist the large marble blocks into place.



3

Twins Seven Years Apart

Fall 2014

In 2014, TECO (Tampa Electric) Energy, Inc. undertook a complicated construction project at its power station in Tampa Bay. ALL Crane Rental of Florida provided two 300-UST crawler cranes. One was a brand-new Manitowoc 2250, the other was the same model, but seven years older. The 2007 model was so well-maintained, no one on the jobsite could tell them apart. “Model year doesn’t matter for a crane that has been maintained and serviced regularly the way we do at ALL,” said Mitch McDonald, general manager of ALL Crane Rental of Florida. That dedication to superior service and maintenance continues to this day, for every unit in the fleet.



4

Cranes Cruise to the Caribbean

Spring 2015



In 2015, some fun in the islands was had by ALL Crane Rental of Florida, who provided one of their massive 18000 Manitowoc crawler cranes to work on a ship coming in for repairs to the Grand Bahama Shipyard on Grand Bahama Island, about 80 miles off the Florida coast. Coming along for the ride was our 900-UST Liebherr LTM 1750. The clear blue Caribbean waters are a potent reminder that cranes from ALL know no borders.



Tower cranes appeared in the early 20th century, but they were heavy and difficult to move, erect, and dismantle. In 1949, Hans Liebherr invented the TK-10, an easily transported, fast-assembly tower crane that could also swing materials horizontally with a jib. It would revolutionize the industry.

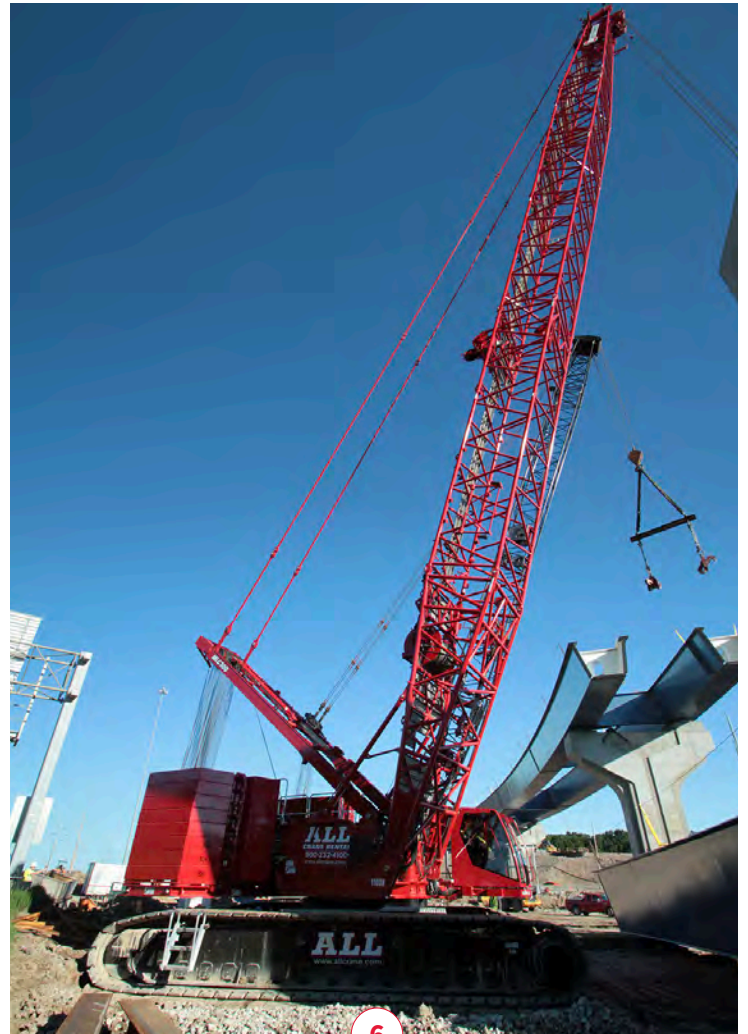


5

Chicago's Floating Crane

Fall 2015

Construction of Chicago's 54-story 150 North Riverside office tower captured the public imagination in the summer of 2015 because of the project's "floating" crane. Due to the tight urban jobsite, Central Contractors Service mounted its 660-USt Manitowoc 888-Ringer crawler crane to a barge anchored in the Chicago River. They'd done it before, but with the high-profile downtown location, the project took on a life of its own, resulting in seemingly endless news reports, social media posts, and the cover of *ACT Magazine*, July 2015.



6

Manitowoc MLC300 Makes ALL Debut

Spring/Summer 2016

With the inaugural lift of ALL's Manitowoc MLC300, the most talked-about product introduction to the ALL fleet in a decade went to work on the largest transportation project in Wisconsin history. The reconstruction of the massive Zoo Interchange on the west side of Milwaukee formed the junction of I-94, I-894, and US Highway 45. The MLC300, with its exclusive Variable Position Counterweight (VPC) system, provides more stability with less ground prep and less matting.



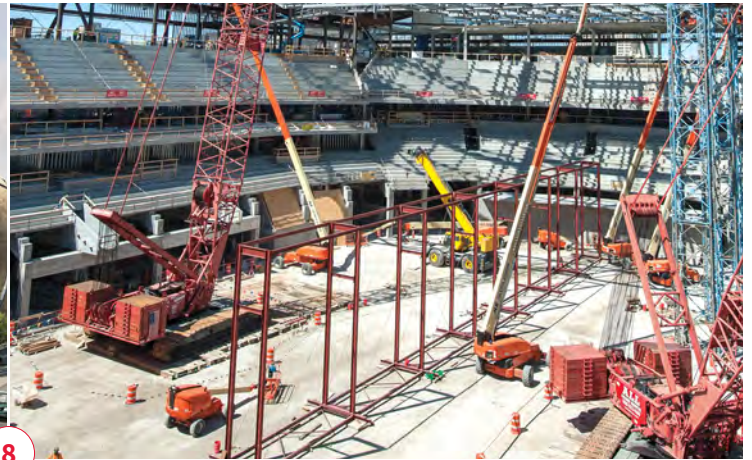
From 2008 to 2014, these cranes were a fixture atop the Shanghai Tower during its construction. Topping out at 2,073 feet, the building is the tallest in China and second in the world only to the Burj Khalifa in Dubai (2,722 feet).



Threading the Needle

Fall 2016

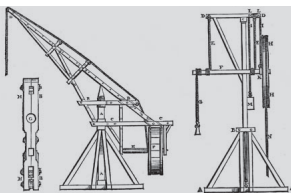
What do you do if a 110-USt Link-Belt TCC-1100 needs to fit through an eight-foot doorway? Take it apart and rebuild it inside, piece by piece. It had to be done when work to a parking garage at Indianapolis International Airport could not be performed with a crane outside the structure due to FAA height restrictions. So Central Rent-A-Crane devised the audacious solution to assemble a full crane inside the structure, similar to building a ship in a bottle. Each piece passed through the eight-foot doorway and was assembled like a 3-D puzzle.



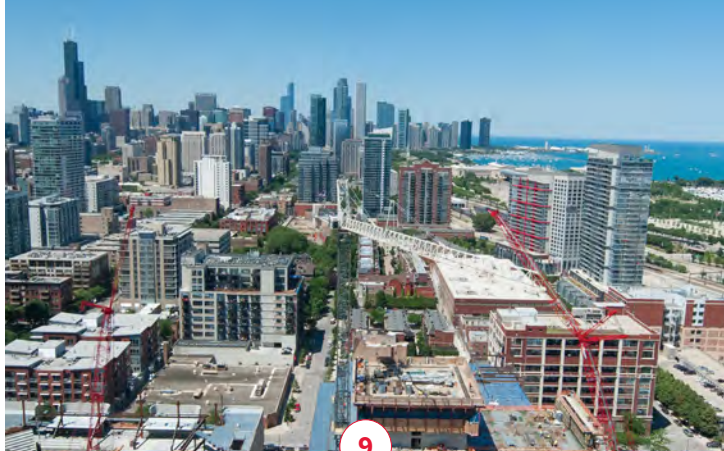
Nothing But Net

Spring 2018

Dawes Rigging & Crane Rental played a major role in construction of the Bucks' new NBA stadium in hoops-happy Milwaukee, supplying so many cranes that sometimes 10 were on the site at the same time. It continued a long history of ALL Family branches taking part in the construction of pro and college sports stadiums, including the homes of the Cowboys, Colts, Cubbies, Browns, and Braves. You might say our operators were raising the rafters before any fan could rise from their seat.



Slewing became a common feature of construction cranes in the 1600s. This helped to shorten work cycles considerably.

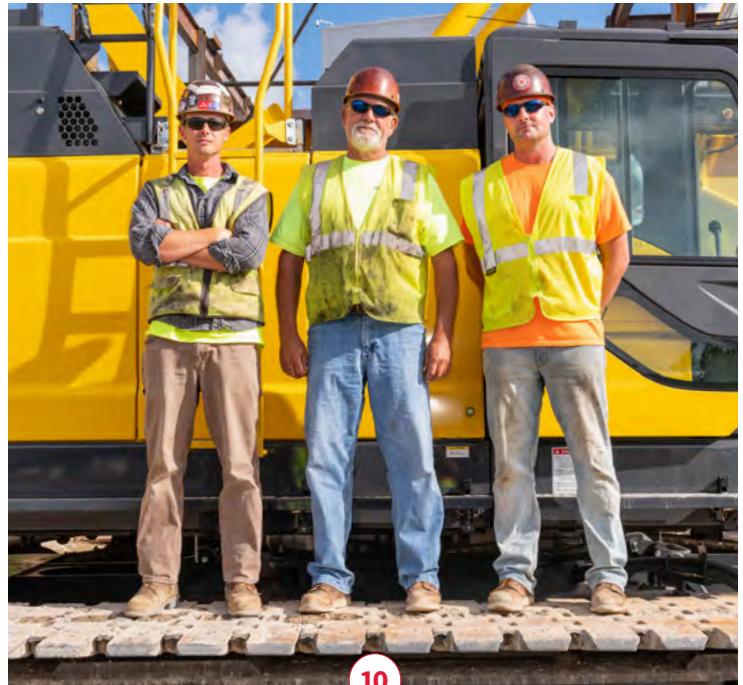


9

Tower Boom

Spring 2018

After *Crane Hot Line* covered our role in the building boom in Chicago, we continued the story in *Lift Line*. As we recounted at the time, a staggering 30 towers coming from Central Contractors Service, a member of the ALL Family of Companies, stood tall in Chicago at one time. Some high-profile projects included a hotel and event center/sports arena adjacent to McCormick Place, renovation of Wrigley Field, and a highly visible new 20,000-square-foot Apple Store on Michigan Avenue's Pioneer Court along the Chicago River.



10

Family Affair

Spring 2020

The concept of family runs deep with the ALL Family of Companies. A hospital project on Cleveland's west side—near ALL's national headquarters—illustrated this point in dramatic fashion with the involvement of the Feiler family. It was the final job before retirement for 35-year ALL veteran Dean Feiler, and he worked it with his son, 10-year veteran Dean Feiler Jr., and his nephew, six-year veteran Alex Feiler. Alex is the son of Art Feiler, who is also retired from ALL. The ALL branches across the country carry numerous stories like this, of parents passing a love for the industry on to their kids.

Like an early slewing ring crane, this hand-crank crane from the late 1800s was used for unloading ships at the Port of Barcelona, Spain.



SHOP INDUSTRIAL CRANES *from 9 - 22 USt*

Shuttlelift 3339, S/N 321665 2011, 9 USt, Cummins 4B3.3 L (2,700 Hours), Engine Block Heater, 32'10" 3 Section FP Boom, 12' Offsettable Swingaway Jib, Aux. Lighting Package, Enclosed Cab, Outrigger Monitoring System, LMI. Located in Atlanta, GA. Unit #10505. **\$65,000**



Shuttlelift 3330FL, S/N 195012-05 2005, 9 USt, Cummins B3.3 (3,700 Hours), 27' Main Boom, 4 Wheel Steer, Enclosed Cab, Independent Outriggers, Strobe, Lifting and Tie Down Lugs, Light Grilles, Engine Block Heater. Located in Nitro, WV. Unit #9274. **\$27,500**



Shuttlelift 5540F, S/N 321984 2012, Cummins Diesel (4,500 Hours), 41' Main Boom, 15' Offsettable Jib, 4 Wheel Steer, Enclosed Cab, Lifting and Tie Down Lugs, Load Indicator, Headlight and Taillight Grilles, Cab Dome Light. Located in Cleveland, OH. Unit #10622. **\$82,000**



Broderickson IC-80-3J, S/N 67008880 2013, 9 USt, Cummins B3.3 L Diesel (1,500 Hours), Catalytic Converter, Engine Heater, 4 Wheel Steer and 2 Wheel Drive, 30' Main Boom, 10' Jib, Pneumatic 10.00 x 15 Tires, All Weather Cab, A/C, Strobe Light, Hoist Drum Rotation Indicators, RCL-Greer. Located in Hammond, IN. Unit #10858. **\$83,000**



5

Brodersen IC-200-3H, S/N 241426200 2013, Cummins QSB3.3 (5,500 Hours), 50' Main Boom, 16' Jib, 2 Wheel Drive and 4 Wheel Steer, Catalytic Converter, Engine Heater, Headlight and Taillight Grilles, Strobe Light, All Weather Cab, A/C, RCL Greer. Located in Knoxville, TN. Unit #10743. **\$95,000**



6

Brodersen IC-200-3G, S/N 222373200 2012, GM Dual Fuel (3,250 Hours), 50' Main Boom, 16' Jib, 2 Wheel Drive and 4 Wheel Steer, Engine Heater, Headlight and Taillight Grilles, Enclosed Cab, Strobe Light, All Weather Cab, RCL Greer. Located in Indianapolis, IN. Unit #10519. **\$90,000**



7

Shuttlelift 7755, S/N 321441 2010, 22 USt, Cummins Diesel (8,900 Hours), 67' 5 Section Boom, 17' Jib, 4 Wheel Drive, 17.5-25 Bias Tires, LMI, Enclosed Cab, Cold Start Kit, Engine Block Heater, Engine Shutdown Feature, Full Lighting Package, Outrigger Alarm System, Headlight and Taillight Grilles, Lifting and Tie Down Lugs. Located in Cleveland, OH. Unit #10367. **\$145,000**



8

Brodersen IC-250-3C, S/N 35650250 2012, 18 USt, Cummins Diesel (4,700 Hours), Catalytic Converter, Engine Heater, 60'7" Tip Height, 20' Jib, Drum Rotation Indicators, 4 Wheel Steer and 2 Wheel Drive, Headlight and Taillight Grilles, All Weather Cab, Strobe Light, RCL Greer. Located in Chicago, IL. Unit #10538. **\$129,000**

SHOP **BOOM TRUCKS** from 30-45 USt

Terex Crossover 4500L 2015, 45 USt, 129' Main Boom, 32'-49' Offsetable Jib, A/C and Heater in Operator Cab. NEW ANNUAL & DOT Inspections. Mtd on a Freightliner 114SD, DD13 450HP, 8LL Manual Transmission, 80 Gallon Fuel Tank, and Federal Bridge Legal. EXW Richfield, OH. Unit #U2116



Manitex 40124S 2013, 40 USt, 124' Main Boom, 31'-55' Jib, Steel Bed, Single Front Stabilizer, No Free Swing, Heat and A/C in Operator's Cab. NEW ANNUAL & DOT Inspections. Mtd on a Kenworth T440, Cummins ISL 370HP, Allison Automatic Transmission, 90 Gallon Fuel Tank, and 66,000 GVWR. EXW Richfield, OH. Unit #U2175



Manitex 30100C 2017, 30 USt, 100' Main Boom, 26'-46' Jib, Oil Cooler, Single Front Stabilizer, and Toolboxes. NEW ANNUAL & DOT Inspections. Mtd on a Peterbilt 367, Cummins ISX12 425HP, 8LL Manual Transmission, and 100 Gallon Fuel Tank. EXW Richfield, OH. Unit #U2146



Manitex 30100C 2013, 30 USt, 100' Main Boom, 26'-46' Jib, Oil Cooler, Single Front Stabilizer, and Toolboxes. NEW ANNUAL & DOT Inspections. Mtd on a Peterbilt 367, Cummins ISX12 425HP, 8LL Manual Transmission, 100 Gallon Fuel Tank, Fenders on Tandem, and 60,000 GVWR. EXW Richfield, OH. Unit #U2162



NEW National NBT45127-1 45 USt, 127' Main Boom, 31'-55' Jib, A/C in Operator's Cab, 102" W Aluminum Decking, and Manual Rotation Lock for Bearing. Mtd on a Peterbilt 567, X15 500HP, 18 Speed UltraShift Transmission, Air Disc Brakes. FOB Richfield, OH. Unit #R2108. 2 Units in Stock

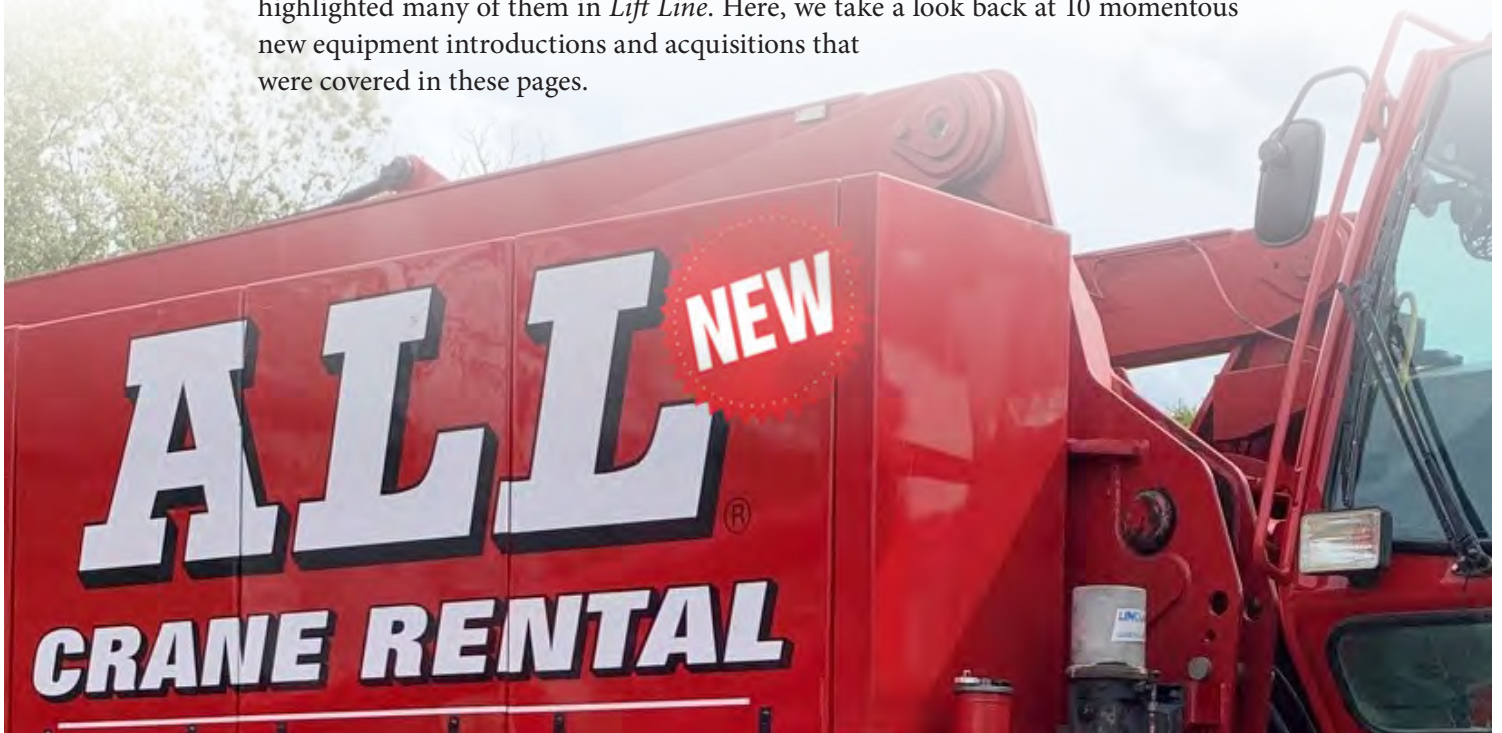


NEW Manitex TC45142 45 USt, 142' Main Boom, 31'-55' Jib, 18 Month Warranty, Remotes, A92.2 Rated (Removes need for test weights) 2 Man LW Basket, 2 Braden Winches, and MUCH MORE. Mtd on a Peterbilt 567, X15 500HP, 13-Speed UltraShift Transmission, 20K FA, 13,500 Pusher, 46K Tandem 13,500 Tag, 100 Gallon Fuel Tank. EXW Richfield, OH. Unit #R2152

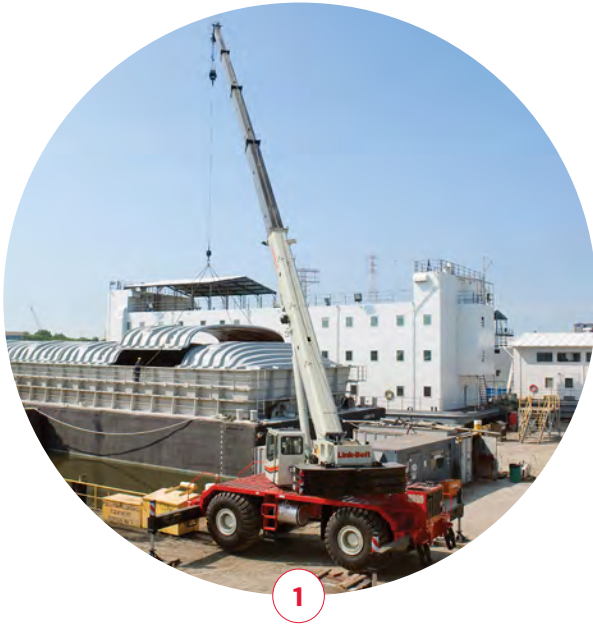
NEW THAT MADE THE NEWS

10 YEARS OF NEW EQUIPMENT INTRODUCTIONS

The crane industry has seen many changes in the decade since our first issue. Equipment has gotten bigger, stronger, and faster, and, in some cases, smaller and more flexible. The aim of any equipment innovation is to increase productivity and make work more efficient and safer. We've highlighted many of them in *Lift Line*. Here, we take a look back at 10 momentous new equipment introductions and acquisitions that were covered in these pages.



In the 1930s, tower cranes began to rise in popularity. Kaiser, Potain, and Wolff were popular tower crane manufacturers. These towers were based on the design of harbor and dockside cranes from that age.



1

RTs on the Rise

Spring 2012

Eight years ago, we talked about our investment in new rough-terrain crane technology, including Link-Belt's 110-USt, three-axle RTC-80110 Series II. At the time, it led its class in maneuverability and transportability and featured bolstered capacity with a five-section, full power boom. At CONEXPO/CON/AGG 2011, we also featured our new Grove 9150E, at the time the world's largest capacity RT at 150-USt. What RTs do for our fleet and for customer jobsites is unparalleled and unheralded. They are workhorses that rarely catch the eye.

We are thankful for these innovations. This year we announced the addition of four GRT9165s—now the highest-capacity, longest-reaching Grove rough-terrain crane, with an industry-leading 205-foot, six-section pinned boom—five feet longer than that of competing models.



GRT9165 RTC-80110



2

Tier 4 Clean Diesel Technologies

Summer 2012

Doing business in an environmentally responsible manner has dominated the conversation since the turn of the millennium. The crane industry had its moment in 2011, when the U.S. EPA announced a switch to Tier 4 diesel engines, similar to Stage IV regulations from the European Union (EU). The standards were designed to reduce harmful emissions and protect air quality. Our article covered facts about the new regulations, including differences between exhaust gas recirculation (EGR) and selective catalytic reduction (SCR) engines, and how the changes might impact service and maintenance. We never looked back. As cranes greened up, so did all of our operations—from our shops to our choice of supplies and chemicals.



Tier4

The ALL Family has more than 100 rebuilt engines in stock—packaged and ready to ship, including a replacement for every crane in our fleet. Should a customer need an engine on the jobsite, a replacement is on the way immediately, minimizing downtime.





Liebherr LTM 1750-9.1 All-Terrain Crane

Spring 2013

We welcomed this 900-USt behemoth to our fleet knowing it was a game-changer. Its unprecedented mobility, transportability, and quick assembly came on a chassis no longer than that of a 600-USt crane. Adding it gave ALL customers the widest range of all-terrain mobile cranes from one source, and the 1750 proved just as popular as we imagined. This crane has been virtually everywhere, including the Bahamas on a little vacation (*read the story on page 12*). So valued was the 1750's contribution to our lifting plans, we added a second 1750 to the fleet just this year.



LTM 1750-9.1



Telecrawlers Run the Show

Fall 2013

Merging the capability of a rough-terrain crane with the mobility and stability of a crawler crane, telecrawlers are popular on job sites where ground conditions are poor and distances between lift sites can be long. ALL went big on its commitment to the category starting in 2008 and has never looked back. Telecrawlers remain an extremely popular choice for pipeline work, bridge construction, electrical transmission lines, wind farms, moving bulk fuel tanks, and general construction. The scale of their capacity has only increased since telecrawlers broke on the scene, ranging now from the TCC-500 at 50 USt to the TCC-2500 at 250 USt, introduced four years after this issue in 2017.



TCC-500 TCC-2500

The Taylor Hydrocrane, featuring two hydrocylinders, was first built in 1946 on a U.S. Army truck body.





5

Manitowoc MLC300

Summer 2014

Perhaps the most anticipated new product launch of the last decade was the Manitowoc MLC300. At CONEXPO-CON/AGG 2014, the 330-USt lattice-boom crawler made big news with its exclusive Variable Position Counterweight (VPC) system. The groundbreaking technology moves the counterweight using a patented rail system that transfers weight accordingly from back to front. This automatically balances the crane's center of gravity to match lifting demands. Later, in 2017, we added the larger 717- USt capacity MLC650 to the fleet.



MLC300 MLC650



6

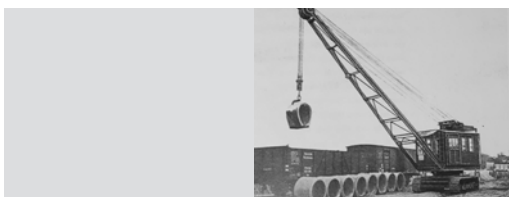
Trucks and Trailers

Spring 2015

In this issue we announced a single package of trailers totaling nearly 200 individual units. For some sense of scale, our fleet would make us the country's fifth-largest trucking company ... IF we were a trucking company. We invest so heavily in transportation so we can deliver equipment to jobsites on a schedule within our control. We never have to rely on third-party trucking. ALL's specialized transport divisions have ICC authority in the 48 contiguous U.S. states and throughout Canada.



ALL
Family of Companies



Pictured is a Mukag crawler crane built in the mid 1930s. It is seen here lifting cement pipe into train cars with the aid of a 'C' hook.



7

Liebherr VarioBase

Spring/Summer 2016



VarioBase®

Two new Liebherr all-terrain cranes were headed to our Carolina branches four years ago, and both included the innovative VarioBase variable crane support system. Although the technology was introduced prior to this issue, our lift planners wanted a story to communicate the advantages of the outrigger monitoring system. VarioBase enables each support to be extended to a different length while automatically delivering support status information to the operator. Cranes now go where they could never go before, and for that, VarioBase remains revolutionary.



8

Liebherr Re-enters the RT Market

Spring 2017

When the largest crane manufacturer in the world re-entered the mid-capacity to high-capacity rough-terrain space, it was big news. And ALL got on board in a big way, with a staggering initial order of 15 units of the 100-US t LRT 1090-2.1. As ALL's business development specialist Hutton Strader said at the time, "With the operational capabilities, the high capacities, attention to safety, and Liebherr's reputation for high quality, we are confident that this new LRT line will be very successful for ALL and our customers." And it has been.

LIEBHERR

LRT 1090-2.1



The USS Gabrielle Giffords was christened June 13, 2015, in Mobile, Alabama. ALL's Mobile branch was contracted to install radar equipment and domes using a Liebherr LTM 1160-5.1



9

Liebherr LTM 1450-8.1 All Terrain Crane

Spring 2018

“Powerful, versatile, and roadworthy” is how we first described the LTM 1450-8.1, one of the most road-friendly 8-axle ATs available. ALL was so impressed, we ordered two before they’d even hit the market. The powerful 279-foot telescopic main boom and a full range of lattice jib attachments allows the 1450 to handle jobs often above its 500-USt capacity. In addition to its tremendous power and versatility, it offers ease of transport and minimal setup time, which means more uptime and profitability for our customers. Not for nothing, it should be noted that this crane was painted a riveting black color and tended to catch the eye of customers and the press on city job sites. It’s a mean-looking machine that hasn’t rested since its inaugural lift.



LTM 1450-8.1



10

ALL Becomes an Authorized Kobelco Dealer

Spring 2018

ALL Crane became the exclusive dealer for Kobelco’s complete CK series of hydraulic lattice-boom crawler cranes, ranging from 85-USt to 275-USt capacities. We immediately sold our first unit, an 80-USt capacity Kobelco CK800G-2 with a class-leading load chart, to Cleveland-based contractor Kelley Steel Erectors. Kobelco is known for its energy-saving engines and operator-focused cab with an intuitive touchscreen computer display. Proud to rent the brands for which we are a dealer, last year we announced an eight-crane package including four new CK800G-2 units (80



USt, 200-foot max boom) and two each of the new CK1100G-2 (110 USt, 200-foot max boom) and CK1600G-2 (160 USt, 250-foot max boom). These new cranes went right to work, too. (Read the story on page 30.)

CK800G-2 CK1100G CK1600G-2



To safely move a 9-ton transformer, this 10-USt-capacity 1930 Universal truck crane had manually extended beams with wooden blocking for support.

SHOP **ALL-TERRAIN CRANES** from 100-900 USt

Link-Belt ATC-3200, S/N P6K1-1446 2011, 200 USt, Mercedes Diesels, ZF Transmission, 8,850 Upper Hours, 4,200 Lower Hours, 92,000 KM, 197' Main Boom, 122' Jib, Aux. Hoist, Block and Ball, 2 Axle Boom Dolly. Located in Pittsburgh, PA. Unit #10423. **\$695,000**



Grove GMK4100B, S/N 4080-2160 (2008) 100 USt, Mercedes Diesel, 9,950 Hours, 71,000 KM, 167' Main Boom, 29'-49' Hydraulic Offset Bifold Jib, (1) 20' Jib Insert, Aux. Hoist, 20.5 XR 25 Tires, A/C in Upper and Lower, Boom Float Kit, 2 Axle Boom Dolly, New Paint. Located in Cleveland, OH. Unit #10203. **\$399,000**



Tadano ATF130-5G, S/N WFN5RUNR192046110 2011, 160 USt, Mercedes Diesels, 9,000 Hours, 80,000 KM, 197' Main Boom, 105' Jib, Aux. Hoist, 2 Axle Boom Dolly. Located in Pittsburgh, PA. Unit #10424. **\$759,000**



Grove GMK6250L, S/N 6220-9168 2011, 250 USt, Mercedes Diesels, 8,500 Upper Hours, 95,000 KM, 236' Main Boom, 124' Jib, Aux Hoist, A/C in Upper and Lower, Trailing Boom Float Kit, Boom Removal Kit, Hydr. Quick Disconnect for Outrigger Beams, Removable Rear Outrigger Boxes, 20.5R25 Tires, Worklights, Block and Ball, 2 Axle Boom Dolly. Located in Fort Wayne, IN. Unit #10464. **\$995,000**



Link-Belt ATC3275, S/N S2K4-4094 2014, 275 Ton, Cummins Diesels, 5,900 Upper Hours, 27,000 Miles, 223' Main Boom, 12' - 40' - 67' Hydraulic Jib, Amber Strobe Light, 156,500LB Counterweight, Aux Hoist, RCL Light Bar, Single Axis Controls, Boom Flood Lights, Boom Launching Option, 3 Axle Boom Dolly. Located in Columbus, OH. Unit #10953. **\$1,259,000**



Grove GMK6300L, S/N 6350-4011 2012, 350 USt, Mercedes Diesels, 5,700 Upper Hours, 35,000 KM, 262' Main Boom, 121' Jib with Luffing Cyl., Aux. Hoist, 20.5R25 Tires, Working Lights, Boom Float Kit, Boom Removal Kit, Drum Rotation Indicator, Outrigger Length Control, Boom Dolly. Located in Pittsburgh, PA. Unit #10508. **\$1,595,000**



Liebherr LTM1500 8.1, S/N 073348 2011, 600 USt, Liebherr Tier 3 Diesels, 8,500 Upper Hours, 42,000 KM, 276' Main Boom, 298' Luffing Jib, Y-Guy, 2 Winches, 20.5R25 Tires, A/C, (8) Counterweight slabs, Additional Fuel Tank, Telma Brake, Working Lights, Liccon. Located in Mississauga, Canada. Unit #10485. **\$3,300,000**



Liebherr LTM 1750-9.1, S/N 096038 2013, 900 USt, Liebherr Diesels Tier 4i, ZF Transmission, 5,425 Upper Hours, 17,000 KM, 171' Main Boom, 180' Fixed Jib, 206' Luffing Jib, V2 - 32'8" Lattice Section, V3 - (2)16'-4" Lattice Section, Eccentric VE includes 16'4" Boom Extension, 2 Winches, 3rd Winch for Luffer, Y Guy, 449,700 lbs of Counterweight, 16.00R25 Tires, Self-Assembly, Removable Telescopic Boom incl. Luffing Cyl. Disassembly, Quick Disconnect, Removable House, Camera System. Located in Toledo, OH. Unit #10662. **\$5,200,000**



Tadano ATF400G-6, S/N 2063162 2015, 450 USt, Mercedes Diesels, 3,100 Upper Hours, 24,500 KM, 197' Main Boom, 257' Luffing Jib, 12x8x12 Drive/Steer, 20.5R25 Tires, 2 Working Lights on Boom, Battery Recharge and Remote Start Connection, Air and electrical lines for rear bumper for dolly, Boom Removal System, Outrigger removal system (front and rear), Additional independent heater with engine, ABS. Located in Atlanta, GA. Unit #11055. **\$2,750,000**

SHOP **CRAWLER CRANES** from 75 - 440 USt

Manitowoc 4100W Series 2, S/N 41109 1972, 230 USt, Cummins Diesel, 150' Main Boom, *Updated Heel Section, Ringer Prepped, Block and Ball. Located in Milwaukee, WI. Unit #8022. **\$575,000**



Manitowoc 18000, S/N 18001002 (2003) Complete Rebuild Cummins Diesel, 300' #55 Main Boom, Luffing Jib, Maxer Attachment, Full Counterweight, Maxer Prepped, Self Erect, Block and Ball. Located in Atlanta, GA. Unit #8220. **Call for Price**



Manitowoc 888, S/N 8881093 1997, 230 USt, Rebuilt Cummins MTA11-C330 (5,335 Hours), 180' Main Boom, Series 2 Counterweights, Self Erect, Ringer Prepped, Hydraulic Powered Crawler Extend/Retract System, LMI. Located in Orlando, FL. Unit #8299. **\$509,000**

Link-Belt LS138H-5, S/N N9J7-9255 2007, 80 USt, Mitsubishi Diesel (13,400 Hours), 120' Main Boom, 3rd Drum, Free Fall. Located in Kaukauna, WI. Unit #DL1064MLW. **\$309,000**

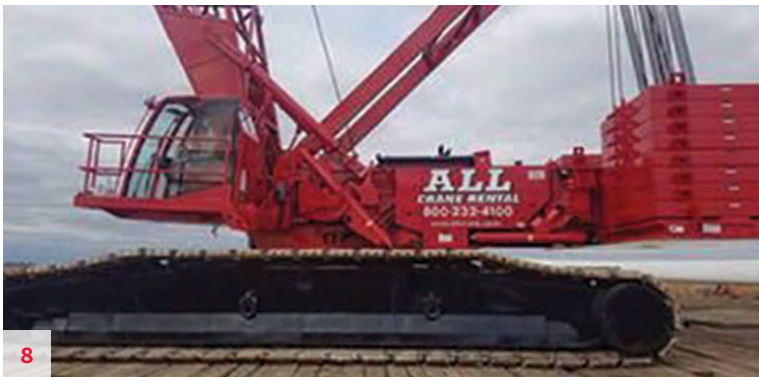




Complete MAX-ER 2000, S/N 2253139 (2002) 200' #79 Boom, 341,000# of Counterweight, Newer Tires. Located in Hammond, IN. Unit #8091. **\$509,000**



Link-Belt LS218HSL, S/N N6J7-9021 2007, 110 USt, Isuzu 6HK1 Diesel Tier III (18,500 Hours), 140' Main Boom, 3rd Drum, Free Fall, New Paint. Located in Lima, OH. Unit #9598. **\$339,000**



Manitowoc 16000, S/N 16001002 2005, 440 USt, Rebuilt Cummins Diesel (600 Hours), 295' #58 Boom, Upper Boom Point, Self Erect, Maxer Prepped, Series 3 Counterweight, Load Moment Indicator, Cold Weather Package, Swing and Travel Alarms, Aux. Drum Prepped, A/C, Block and Ball, Rebuilt Tracks, New Paint. Located in Elk Mound, WI. Unit #9170. **\$1,800,000**



Kobelco CK1100G-2, S/N GH05-04259 (2019) 110 USt, Hino Engine (1,755 Hours), 190' Main Boom, 3rd Drum, Aux. Sheave, Block and Ball. Located in Pittsburgh, PA. Unit #11436. **\$795,000**



Link-Belt TCC750, S/N R8K0-1879 2010, 75 USt, Cat Diesel (15,500 Hours), 115' Main Boom, 33'-58' Bifold Jib, Aux. Hoist, Block and Ball. Located in Chicago, IL. Unit #10341. **\$290,000**

NEW EQUIPMENT: Choices and Service Mean Leadership

Are you considering buying new lift equipment? Ask tough questions about the seller.

The fact is, it takes more than great products to be a great dealer. As a new equipment dealer, the ALL Family offers an unmatched lineup—and a direct link between customers and virtually any

type of lift equipment, including cranes, aerial lifts, boom trucks, and industrial/carrydeck cranes. But there's more. It also takes great support. Reliability, quality, parts, and service are the pillars of our proud tradition of integrity, one that proves itself after the sale. Because integrity isn't only in the transaction, it's our business model.

KOBELCO®

Complete line dealer. Kobelco's complete CK series of hydraulic lattice-boom crawler cranes features nine models from which to choose! The ALL Family provides sales, service, and parts for these cranes, which range from 80 USt to 330 USt capacities.

New dealer partnership. ALL Crane is the newest Kobelco dealer in the territory covering Ohio, West Virginia, and Western Pennsylvania.

Crawlers to 330 USt

FREE
KCross Telematic
system on
ALL Kobelco
cranes



CK800G-2

- EPA Tier IV final standards compliant
- Up to a 30% savings in fuel consumption
- LMI touch screen
- Compact structure
- Larger cab design
- Max Capacity: 80 USt
- Max Main Boom Length: 200'
- Max Boom + Jib Length: 180' + 60'

MC BRODERSON® Manufacturing Corp.

Broderson Carry Deck Cranes are extremely versatile, ideal for lifting materials that require a compact, low-profile crane to maneuver in tight spaces and clear overhead obstacles. Multiple sizes and capacities, including optional equipment for customization, ensures your Broderson crane can fulfill all your lifting needs.

IC 200 3J Industrial Carry Deck Crane

Ideal for lifting materials that require a compact low-profile crane that can clear overhead obstacles and maneuver in tight spaces, the Broderson IC 200 is extremely popular because of day in, day out performance and versatility.



IC 200 3J

- Compact, low profile
- Clears overhead obstacles and maneuvers in tight spaces
- Day in, day out performance and versatility
- Precision controls and heavy-duty design to pick and carry
- Main Boom: 15'6" to 50'
- 16' Offsettable boom extension
- Max Capacity: 15 USt

Members of the ALL Family are authorized dealers for many popular brands of cranes, boom trucks and aerial boom and scissor lifts, as well as telehandlers and trailers.

**NATIONAL
CRANE**
by Genie

SHUTTLELIFT
by Genie

POTAIN
by Genie

HY-BRID LIFTS™

CRANES: MIKE GARRITY, NEW EQUIPMENT DIRECTOR / MIKE.GARRITY@ALLCRANE.COM / 216.524.6550

TOWERS: SAM MOYER, GM ALL TOWER CRANE, LLC / SAM.MOYER@ALLCRANE.COM / 330.734.6988

AERIALS: KRIS KASPAREK, GM ALL AERIALS, LLC / KRIS.KASPAREK@ALLCRANE.COM / 330-558-8290

BOOM TRUCKS & TRAILERS: JOSHUA BACCI, GM ALT SALES CORP. / JOSH.BACCI@ALLCRANE.COM / 330.558.8421

Link-Belt CRANES

Complete line dealer. Link-Belt cranes represent a large part of ALL's rental fleet. And because we believe so strongly in the superior brand, we are an exclusive dealer in Wisconsin as well as in portions of Michigan. We offer parts direct and service for what we sell.

75RT

- 75-UST capacity
- 8' to 142' five section, full-power boom
- Pulse 2.0 RCL system provides advanced diagnostics & monitoring



MAEDA Mini Cranes

Maeda manufactures the most compact crane models in the industry, and they have loaded them with features normally found on larger cranes.

MC405

- Multi-position outriggers
- Two-speed functions
- Operator seat w/ centralized control
- Remote Control w/ wireless option
- EPA compliant engines
- Max Capacity: 8,480 lb
- Max Main Boom Length: 67.8'
- Body Width: 55" (4'7")



SKYJACK

2020 SKYJACK SJ1256 THS – 12,000-lb Capacity, 56'3" Lift Height, 42'6" Forward Reach, Axle Mount Outriggers, Solid Filled Tires. Located in Cleveland, OH. **Price on request.**

2020 SKYJACK SJ1056 THS – 10,000-lb Capacity, 56'3" Lift Height, 42'6" Forward Reach, Axle Mount Outriggers, Solid Filled Tires. Located in Cleveland, OH. **Price on request.**

2020 SKYJACK SJ843 THS – 8,000-lb Capacity, 43'4" Lift Height, 28'7" Forward Reach, Solid Filled Tires. Located in Cleveland, OH. **Price on request.**



IN THE LIFE

IT'S ALL ABOUT PEOPLE

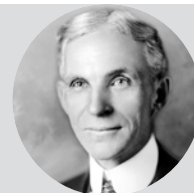
SOME OF THE MEMORABLE CHARACTERS WE'VE MET ALONG THE WAY

An organization is only as good as its people, and we have been fortunate to have had an abundance of hardworking, dedicated, and skilled people working at every level of the company. Many have had careers with us that are measured in decades, not just years. A surprising number of them have even introduced their kids to the business, creating ties that run for generations. It adds up to a strong organization made up of incredible, committed people. We could easily have filled this issue of *Lift Line* with all their stories, but we had to choose a select few to “meet” again.



“Coming together is a beginning, staying together is progress,
and working together is success.”

—Henry Ford





“ALL’s 50th Anniversary”

– The Liptak Family

Winter 2013-2014

ALL marked 50 years in business in 2014, and company president Michael L. Liptak penned an introductory letter to this issue that celebrated the milestone. He wrote, “It was 1964 when my father, Michael C. Liptak, Jr., his brothers, Jake and Larry, and my mother, Marvine, first recognized the contractors’ need for lift equipment rental... The original plan was to achieve excellence. Today, the legacy of excellence is unstoppable.” We couldn’t have said it better.



ALL CEO and President
Michael L. Liptak

“Today, the legacy of excellence is unstoppable.”

“Rebuilds: What About Quality?”

– Larry Jeppe

Winter 2011



Larry Jeppe,
Director of Procurement,
circa 2011

In this article extolling the virtues of rebuilds, we introduced *Lift Line* readers to Larry Jeppe, at the time ALL’s corporate parts manager. Jeppe remains with the company today, now serving as director of procurement. His knowledge of ALL and the crane business extends to all facets. His quote from that 2011 article could still serve as a mission statement: “When a customer buys from ALL, they become a member of our organization. It’s like joining our family.”



Marcus Vitruvius Pollio was a Roman engineer and master builder during the reigns of Julius Caesar and Emperor Augustus. He described cranes that were being used in Greece in his works “Ten Books About Architecture,” which were written between 27 and 23 B.C.

“Logistics: The Crane Control Center”

– John Bacci and Josh Bacci

Winter 2012-2013



John and Josh Bacci, father and son and members of the ALL Family.

An article about John Bacci, then a 35-year ALL veteran and the company's logistics manager, also introduced *Lift Line* readers to John's son, Josh. John got his start with ALL as an over-the-road, long-haul driver and became a city driver specializing in heavy and oversized loads. He then assumed the role as logistics manager, making him one of the “air traffic controllers” for the entire fleet. Josh joined

the company as a fresh-faced 16-year-old, worked for years in the field, and was in inside sales when this article was published. As Josh said at the time, “Dad saves customers money just by asking questions. His experience delivers accuracy and savings. And there are more like us ... guys raised in the yards or on the roads.” Josh is now general manager of ALT Sales Corp. Sadly, John passed away in 2020. But his legacy lives on in the systems he put in place for the company ... and in the work being done by Josh.



“There's Safety in Our Numbers”

– Kirk Ward

Winter 2012-2013



Kirk Ward, ALL Safety Director, circa 2010

Safety is always a serious subject at ALL. It's hard to reflect on the man-hours spent in organized training without a nod to the man who started it all, Kirk Ward. He's ALL's longtime corporate safety director (a position he still holds today), and, in this article, Kirk was recognized for having been named *Crane Hot Line* magazine's 2010 Corporate Top Trainer. The article also introduced readers to what employees jokingly refer to as “ALL-Mart”. ALL-Mart is Kirk's full safety training library, complete with CDs and DVDs that anyone can borrow. He also stocks a complete assortment of PPE,



from hard hats to respirators, plus harnesses for protection against falling. Safety is a pillar on which the ALL Family builds, and Kirk is a major reason why it has taken hold in our culture.



One of the earliest cranes was the shaduf, first used to move water in Egypt about four thousand years ago. The system consists of a long, pivoting beam balanced on a vertical support. A heavy weight is attached to one end of the beam and a bucket to the other. Then a user lowers the bucket to the water, fills the bucket, and allows the weight to raise the filled bucket, which can then pivot to another location.

“At Your Service”

– Daniel Giera, Raymond “Torch” Pekarski

Winter 2012-2013



Daniel Giera, Fabrication Shop Engineer, circa 2017

A huge part of the ALL fleet are the scores of service trucks we assign to cranes and job sites throughout our North American footprint, maximizing our response time and minimizing downtime for our customers. Daniel Giera is a mechanical engineer who, until recently, was among the highly skilled staff that fabricates ALL’s service trucks. Giera joined ALL part-time while he was still in school, training with Raymond “Torch” Pekarski, a memorable figure in ALL’s history. At the time, Giera’s priority was converting Torch’s hand-drawn engineering plans into AutoCAD. Torch was jack-of-all-trades and king of maintenance, with a well-earned reputation for being able to fix anything. He was critical to setting the trajectory for ALL in the early days, creating a long shadow with his experience and know-how. As for Giera, he is now an application engineer at ALL Tower Crane.



Raymond “Torch” Pekarski

“Truck Shop”

– Leonard Kelley

Spring 2013

We spoke with Leonard Kelley, who supervised the TruckShop, one of 10 service shops in Cleveland’s main yard. A year later, Kelley was profiled again for an article celebrating his 40th year of service with ALL. Kelley came to ALL from Firestone and was a tire specialist for ALL’s own truck fleet for several years before becoming a long-haul truck driver for the next decade and a half. Now retired, Leonard finished his career as the truck shop supervisor. The key to his longevity?

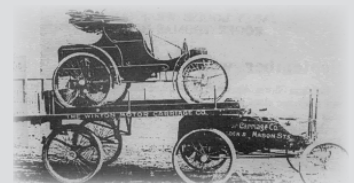


“You have to be aggressive, self-motivated and intelligent. I spent a lot of time in my early years watching really smart people doing really amazing work. But at some point, you tell yourself to stop looking and start doing it yourself.”



From left: Michael C. Liptak, Leonard Kelley and Michael L. Liptak circa 2014.

In 1898, not far from ALL’s headquarters, the first semi-truck was invented in Cleveland, Ohio. Alexander Winton, a carmaker, needed a way to transport his vehicles to buyers around the country. What he created—a truck capable of carrying significant, weighty cargo—was the first truck and trailer. ALL’s 400+ tractors and 2000+ trailers would make Winton proud.



“Tower Cranes”

– Clay Thoreson, Rick Mikut, Sam Moyer

Summer 2014

When you see a tower crane, you know something good’s happening in the economy. This article demonstrated how a rise in tower jobs signaled recovery from the prior recession. Towers have always been an important part of the ALL Crane mix, and some greats of the business have helmed the division. Rick Mikut was the founding general manager of ALL Tower Crane, another accomplishment on his long list of credits amassed in four-plus decades with the company (Rick is currently the manager of the crawler crane division). In 2010, crane industry legend Clay Thoreson left Manitowoc's Crane Group's North American tower crane team to lead ALL's tower division. When Clay retired in 2018, Sam Moyer was promoted from ALL Tower Crane's application engineer to general manager.



Rick Mikut,
(Former) ALL Tower Division
Manager, circa 2008

Clay Thoreson,
(Former) ALL Tower Manager
Retired, circa 2013

Sam Moyer,
General Manager, circa 2017



“Repeat Champion”

– Kenneth Bowyer

Spring/Summer 2016



Kenneth Boyer,
ALL Champion Crane Operator, circa 2013

Over the decade, we chronicled how Florida ALL Crane operator Kenneth Bowyer became the first-ever repeat champion of the Crane Operator & Rigger Skills Championship at the International Construction and Utility Equipment Expo (ICUEE). Known to fans as the “crane rodeo,” the competition lets operators demonstrate their crane mastery on an obstacle course, perform tricky lifts, and engage their machines in finely tuned maneuvers. Bowyer won the competition twice between 2013 and 2017, the first repeat champion in the rodeo’s history. At the time, Bowyer had been an operator for 20 years and was proud but low-key about the victory, saying, “Everyone has the same chance as I do. Bring your skills and come to the table.” And indeed, many operators came to the table for ALL over the years. If equipment service is the backbone of

continued on page 39



The crawler crane was born over 500 years ago, when treads were first introduced to crane bodies as far back as the 1500s! Crane builders began attaching two treadmills, one on each side, to a rotating housing containing the boom. The early cranes still required human or animal power to crawl, but mobility had become part of the crane game.

continued from page 38

the brand, ALL's operators are the face of the company. They trade daily their passion, precision, and skill for field experience that can't be taught or simulated. It's not uncommon for ALL's operators to move on to other positions within the company. Today, Kenneth is an equipment sales and rentals specialist with ALL Crane Rental of Florida. Over the years *Lift Line* also interviewed other from-the-cab leaders, including sales representative and equipment specialist Brian Meek, project coordinator Chad Rados and Indianapolis branch manager Kevin Hileman, to name a few who began their careers with ALL as crane operators.



Chad Rados, circa 2016



Brian Meek, circa 2015

"ALL in the Family"

- The Feiler Family

Spring 2020

"Family" is a big deal to ALL—it's right there in the name The ALL Family of Companies. It started with the Liptak family and continues with so many families who've made a home at ALL. This includes the Feiler family, brothers Dean and Art Feiler and their sons, Dean Jr. and Alex. In the early 1990s, Art, already an ALL operator, brought Dean Sr. into the ALL Family after his tour of military service ended. Fast forward three decades: this article chronicled the last job for Dean Sr., building a community hospital in Cleveland with his son and nephew. For the three Feilers, every day on this job site was a "family reunion." This can be said on most days at ALL, a company where family roots run deep.



Dean Feiler Sr. (center) and his nephew, Alex, and son, Dean Jr., circa 2019



Flashback, circa 1985. Ricky Mikut (see tower crane profile on page 38) getting his morning coffee. Rick "Ricky" Mikut has been in this business a long time—and he's still a young guy! He's got 40+ years with ALL, and anyone who knows him has learned from his experience.



SHOP **BOOM & SCISSOR LIFTS** from 14 -85 ft
MATERIAL HANDLERS from 8,000-10,000 lbs



1

Skytrak 8042, S/N 0160052648 2013, 8,000 Capacity Cummins DSL, Enclosed Cab, Foam Filled Tires, 4x4. Located in Elk Mound, WI. Unit #10727. **\$44,000**



2

Genie Z-34/22NJ, S/N Z34N11-9496, 34' Platform height, Electric, Jib, Non-Marking Tires, 2x4. Located in Richfield, OH. Unit #Z9340. **\$17,000**



3

JLG 600S, S/N 0300178821 2013, 60' Platform Height, Deutz DSL, Foam Filled Tires, 4x4. Located in Kaukauna, WI. Unit #Z9633. **\$35,000**



4

JLG G12-55A, S/N 0160041268, 12,000 lbs Capacity, 55' Light height, Cummins DSL, Enclosed Cab, Foam Filled Tires, 4x4. Located in Pittsburgh, PA. Unit #10469. **\$49,000**



5

Genie Z-80, S/N Z8010-2664 (2010) 80' Platform height, Deutz DSL, Jib, Generator, Foam Filled Tires, 4x4. Located in Pittsburgh, PA. Unit #K2526. **\$27,000**



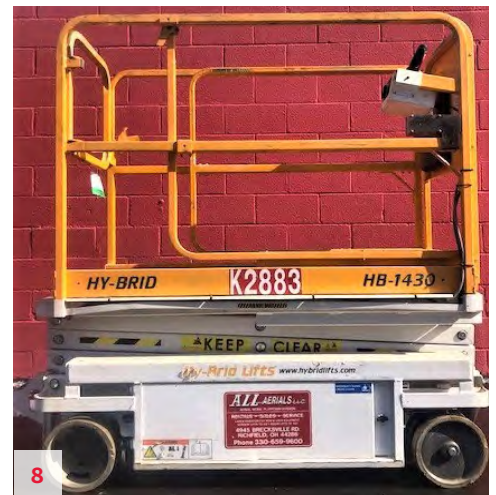
6

Genie S-85, S/N S8511-8572 2011, 85' Platform height, Deutz DSL, JIB, Generator, Foam Filled Tires, 4x4. Located in Toledo, OH. Unit #K2541. **\$35,000**



7

JLG G10-55A, S/N 0160053351 2013, 10,000 lbs Lift Capacity, 55' Lift Height, Cummins DSL, Enclosed Cab, Foam Filled Tires, 4x4. Located in Hammond, IN. Unit #10763. **\$69,000**



8

Hy-Brid HB-1430, S/N D02-11269 2015, 14' Platform Ht., Electric, Non-marking Tires, 2x4. Located in Richfield, OH. Unit #K2883. **\$5,000.00**

PICTURE PERFECT

A COLLECTION OF THE MOST AMAZING PHOTOGRAPHS FROM THE LAST 10 YEARS

Nothing makes a story come to life like stunning photography. We've been fortunate to have captured some breathtaking moments over the years. Whether documenting gorgeous views, showcasing a seemingly physics-defying lift, or providing a peek into a historic location, these photos brought us all a little closer to the action.

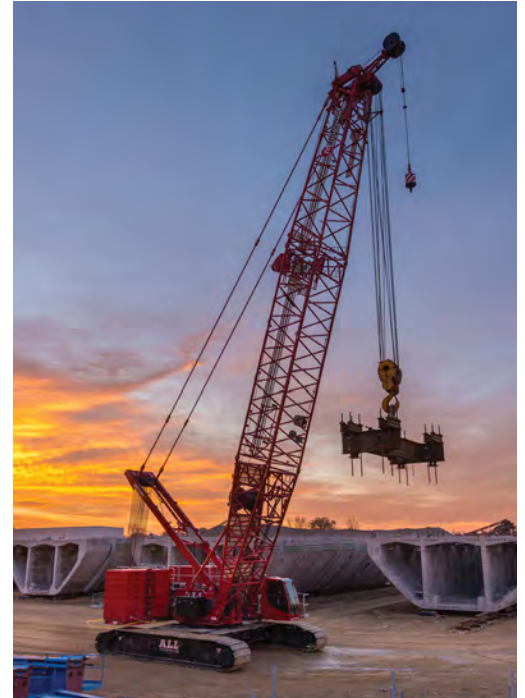


Central Contractors Service, circa 1940s. Chicago, the “city of the big shoulders,” is famous for its landmarks, from the Water Tower to Soldier Field, and ALL’s Central division has called Chicago home since the 1940s. We’re as much a part of the landscape as Lake Michigan, and we are proud to have been a trusted partner in hundreds of projects that helped create the Chicago we know and love today.





The sky's no limit. The first renovation project in Chicago to build up, not out, the Blue Cross Blue Shield Tower "grew" by 25 stories, building on top of the existing 32 stories with the help of two Potain towers from ALL.



Up before dawn. In 2016, ALL began work on the St. Croix Crossing, connecting Minn. and Wis. This was one of the first jobs for our new MLC300.



48 Days and 48 Nights. In 2013, Central Rent-A-Crane provided cranes and people to work 24/7 for 48 days at U.S. Steel Corp's Gary Works in Gary, Ind.



School cap. Alcoa High School in Alcoa, Tenn., received its crown jewel in 2015, a 40,000-pound aluminum dome. ALL Crane Rental of Tennessee provided a 210-USt Link-Belt ATC-3210 to lift and set the dome, its cap, and its spire.



No. 20 is an American 5450 truck crane made in 1965 and *the crane* in the "three men and one crane" narrative. It remains operational and used for light duty in our Columbus yard.



Such great heights. ALL Canada Cranes & Aerials in Mississauga provided seven cranes to help erect 146 wind turbines in phase one of the multi-phase Seigneurie de Beauré Wind Farms project in Beauré, Quebec—the largest Canadian wind power project currently in development. Pictured: ALL's LTM 1500-8.1, with a 258-foot main boom.

Shea-Matson, which would later become our Dawes Rigging and Crane Rental, lifts a smokestack with a gin pole. The gin pole, an early predecessor of hydraulic cranes, is a supported pole that uses a pulley or block-and-tackle on its upper end to lift loads.





Lady luck. In 2013, we controlled the weather. Liebherr LTM 1250-6.1 (300 USt), Horseshoe Casino Pedestrian Bridge, for more pleasant winter walks.



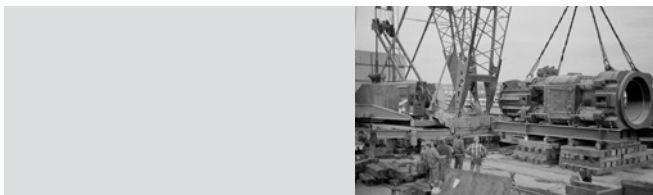
Urban energy. ALL's Manitowoc 16000 builds the \$5.9 million, 2.5-megawatt wind turbine in the middle of Cleveland, Ohio.



The Chicago ringer. ALL's 888 Ringer on the Chicago River captured the attention of both heavy lift enthusiasts and the simply curious. The job received so much attention it landed the cover slot of ACT's July 2015 issue.



Rock n' boom. In a challenging gig at the Rock & Roll Hall of Fame in 2010, ALL picked an electrical control box for microwave panels off the highest part of the roof. On stage? Grove GMK6250-L.



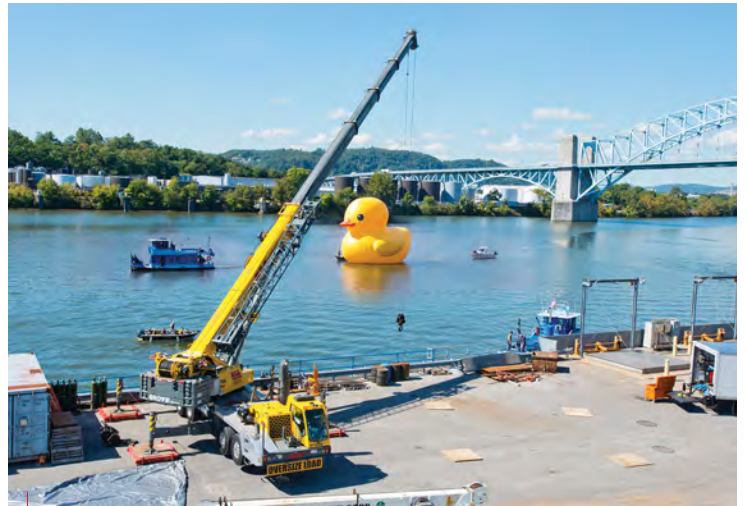
Dawes Rigging and Crane Rental unloads a 300-USt oil drilling hammer in the Port of Chicago.



Lofty goals. In 2011, a tower crane operator cares for his ride. The Manitowoc MD485B helped erect an 18-story office building. The ALL Tower Crane division helps you meet your loftiest goals.



Bridge over "walleye waters." Operators of two 500-UST DeMag AC400 were literally on edge, lifting and placing the enormously heavy concrete segments as the bridge slowly grew 130 feet over the water.



Hope floats. In 2013, Pittsburgh, Pa., was host to the first U.S. visit of artist Florentijn Hofman's globe-hopping giant rubber duck, meant to promote peace. Our Grove TMS9000 set the 14,000-lb. duckie on the river.

Dawes Rigging & Crane Rental, a member of the ALL Family of Companies, grew out of the Shea-Matson Company of Wisconsin, which opened a second office and shop in the heart of Chicago in 1946. Here, Shea helped "power on" one of the largest GM Motoramas ever built, the September 1955 GM Powerama. It lasted 26 days and cost \$7 million.





Hit the heights. In May 2014, an enormous, glittering chandelier hanging over Cleveland, Ohio's, theatre district was installed and lit. The chandelier has been designated by Guinness as the world record holder for the largest outdoor chandelier. Grove GMK5165 AT (165-USt).



Go big or go home. Our Manitowoc 18000 crawler with MAX-ER (825 USt) lifts massive ductwork for a six-story structure at a natural gas plant in Southern Indiana.



before



after

American spirit. Dawes Rigging & Crane Rental, a member of the ALL Family of Companies, builds the tallest flagpole in North America. A wind turbine bears a lot of resemblance to a large flagpole; however, the average wind turbine, at 262.5 feet, is typically not as tall as ACUIITY Insurance's famous 400-foot flagpole. A Manitowoc 16000 Series III (440 ton class EPIC technology crawler crane) was selected for the job.



Michael C. Liptak, Jr. and his brother Jake had been working in the steel industry, running cranes. Another brother, Lawrence (Larry), was returning from serving in the Army. The brothers, along with Michael's wife, Marvine, started a crane company ... and a family business was born. Pictured, Michael C. Liptak Jr.

SHOP TRUCKS & TRAILERS



Peterbilt 389 S/N 1XPXD40X48D759292 2008, WB 272", CA 171.40 Front Axle 14,600 lbs, Rear Axle 46,000 lbs, HOLL Air Slide, Peterbilt Air Trac Suspension Cummins ISX 550 HP, 655,562 Miles High Efficiency Cooling, Fuller 18 Speed, Alum Wheels, Dual 120 Gallon Fuel, 70" Ultra Cab W/Prestige Interior Fresh Engine Overhauled. Located in Cleveland, OH. Unit #X490. **\$72,000**



Shop NEW trailers
through ALT Sales, an
authorized dealer for
Landoll and Manac.



Peterbilt 379 Flat Bed Truck S/N 1XP5DB9X3VN427185 1997, Caterpillar 3406E 490HP, 738, 260 Miles Fuller 13 Speed, 12,000 lbs Front Axle, 20,000 lbs Pusher Axle, 40,000 lbs Rear Axle, Dual 100 Gallon Fuel Tanks, 17' x 96" Flat Bed, Gauges and More. Located in North Charleston, SC. Unit #CL923. **POR**



Talbert S/N 40fak2840l1008286 1989, 60 USt 2+2+2 Multi Axle Model T4dw-60-Ra-T1-St 2/2, Turner Air Suspension, Talbert Telescopic Drop Legs, Tool Boxes, Right Weigh Load Scales, Aluminum Wheels, Length 73' 5", Width 9' 3/4", 28' Well, 27' 5" Clear, Empty Weight 50,000, Well Maintained Trailer. Located in Cleveland, OH. Unit #X392. **POR**



Chevrolet 5500 S/N 1GBE5C1225F531122 2005, Mechanic Service Truck, 171,154 Miles, Lincoln Welder, Compressor, Autocrane 5005H, GVWR 19,500, Front: 7,000, Rear: 13,500, Duramax-Diesel, Allison-Automatic. Located in Cleveland, OH. Unit #CL1517. **POR**

SHOP **CRANE PARTS** FIND MORE PARTS AT CRANEPARTS.COM

Uptime is the name of the game, and our reputation for service and maintenance is unequalled. It is demonstrated every day by the industry's most reliable and diverse fleet. We have more than 100,000 factory parts in stock, including a backup motor for every model of crane in our fleet, so we're ready for any eventuality. Visit craneparts.com to see a wider selection as we continue to add parts and engines for sale.



Cummins 6C-8.3L, S/N 46856236250 hp @ 2200 1950 LBS. Located in Cleveland, OH. **\$7,500 + \$3,000 Core Charge**



Cummins 4BT 3.9L Engine, 105 HP @ 2800 870 LBS. Located in Cleveland, OH. **\$5,000 + \$500 Core Charge**



Deutz F3L1011F, Used, Low Hours. 500 LBS. Located in Cleveland, OH. **\$3,554 + \$1,300 Core Charge**



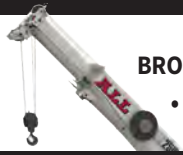
Liebherr D 9406 ti-e a4, S/N 99 11 0637 429 hp @ 1900 2590 lbs. Located in Cleveland, OH. **\$52,802 + \$10,000 Core Charge**



Manitowoc 111 & 222 Parts:

Main Boom, Jib Inserts, Upper Boom Points, Misc. Parts

100,000+ parts on the shelf — plus, we are a certified parts and equipment dealer for the following brands:



**BRODERSON • GENIE • HY-BRID LIFTS • JLG • KOBELCO • LANDOLL • LINK-BELT • MAEDA • MANAC
• MANITEX • NATIONAL CRANE • POTAIN • SHUTTLELIFT • SKYJACK • SKYTRAK • TEREX**

ALL
Family of Companies



Swingaway Jib - Grove

Part #2176900060. Fits: AT880, AT885, AT990 RT725, RT733, RT735, RT738, RT739, RT745, RT750 RT760, RT760C, RT765 TMS300, TMS300B, TMS860 IND1012, RG35, RTG35, MZ82X. Located in Cleveland, OH. **\$4,209**



Jib Inserts - Grove

Part #217491008412 Available, 20' foot each. Fits RT760E, RT765E-2, RT770E, RT875E, RT880E, TMS700E, TMS745E, TMS745E10, TMS750E, TMS760E, TMS800E. Located in Cleveland, OH. **\$6,709**



Complete 240' Luffing Jib for Grove GMK7550. Located in Cleveland, OH. **POR**



Aux Boom Nose - Grove

Part # 2174900762. Fits RT745, RT750, RTG35. Located in Cleveland, OH. **\$2,125**



Boom Butt - Manitowoc, Manitowoc 888 **POR**



30' Fixed Jib - Link Belt

Complete 30' jib for Link-Belt LS218HSL **POR**



Misc. Hydraulic Pumps in Stock. Call for more information. **POR**



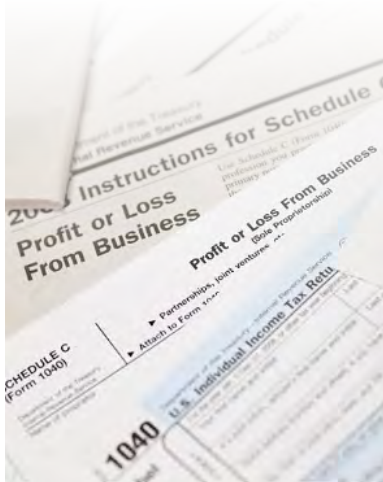
Boom Butt - Manitowoc, Manitowoc 999 **POR**

SAVE ON ALL YOUR EQUIPMENT NEEDS WITH THESE TAX INCENTIVES

TAKE ADVANTAGE OF SPECIAL TAX INCENTIVES FOR 2020.
PURCHASE ELIGIBLE EQUIPMENT AND DEDUCT THE COST!

More good reasons to consider buying equipment now: Section 179 of the Tax Code has extended expensing limits through the end of 2020. Qualifying businesses will be able to write off up to \$1,040,000 in total for BOTH new and used equipment purchases for 2020. The deduction can lower your federal tax bill dramatically, and can be combined with the depreciation bonus. Please consult your tax professional for more details on these incentives. Information herein provided by Associated Equipment Distributors (AED).

SECTION 179
QUALIFIED FINANCING
Let Your Tax Savings Cover Your Equipment Payments



Section 179 Deduction:

Use this to invest in your business by adding capital equipment—equipment you'll use to improve operations and further increase revenue. For 2020, write off up to \$1,040,000 on total annual eligible purchases of \$2,590,000.

Bonus Depreciation:

With this, you can deduct the entire cost of qualified NEW OR USED equipment purchases without limitation.

EXAMPLE OF HOW YOU CAN SAVE

Cost of New or Used Equipment:	\$1,000,000
Total Deduction:	-\$1,000,000
Tax Savings at 25% tax rate:	\$250,000
Cost of Equipment after tax savings:	\$750,000

*This information should not be considered tax advice. Contact your tax advisor for details.
Further information is available at IRS.gov. Learn more about Section 179 at section179.org.*

ALL
Family of Companies

ALL CENTRAL

DAWES

JEFFERS

ALT

www.allcrane.com